



## Local Authority Building Control

(LABC) is dedicated to maintaining the highest standards in building design and construction. It is based on a publicly accountable and independent service, ensuring that buildings comply with relevant legal requirements for health and safety.

We aim to assist you in producing high quality buildings in a time scale which keeps your costs to a minimum by providing a fast, efficient and cost effective building control service. Our surveyors have wide technical expertise, extensive knowledge of materials and construction methods as well as access to very valuable local records. Discussions at an early stage with our building control surveyors can help identify problems, provide cost saving innovative solutions whilst guaranteeing that confidentiality will always be maintained.

LABC Surveyors have established links with other local authority services. Development Teams with members from other services e.g. planning, building control, and highways for example, can usually be brought together to give a streamlined service with only one point of contact – most often a building control surveyor. The emphasis is on avoiding difficulties.

LABC has the experience and technical skill to ease you through the building process. With the assurance of the highest quality and standards you can trust, at a speed and cost to meet your schedule and budget.

For further details about LABC services and Value Added Products please contact your Local Authority

# Building Control in Herefordshire & Worcestershire

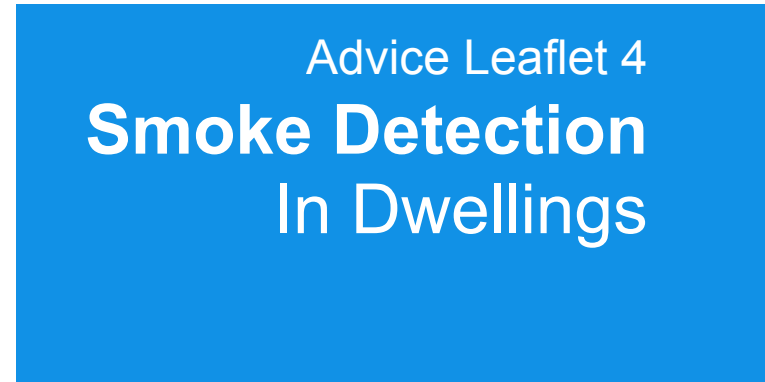
The Authorities of Herefordshire, North Worcestershire and South Worcestershire work closely together to provide a consistent approach to the Building Control function.

For further information about the services that we provide please contact your local office.

**North Worcestershire Building Control**  
01527 881402

**Herefordshire Council**  
01432 261940

**South Worcestershire Building Control Partnership**  
01684 862328



## Introduction

In the UK a substantial number of people die and others are injured in domestic fires every year, many from smoke inhalation. It is widely accepted that those deaths and injuries would be significantly reduced by installing and maintaining smoke alarms within dwellings.

## Purchasing Smoke Detectors

When purchasing a smoke alarm ensure that it complies with a British Standard or the International Standard Organisation (ISO) standard. For self contained smoke alarms they must comply to BS 5446 Part 1 1990, for automatic fire detection, and to BS 5839 Part 1 1988 for an alarm system.

Never purchase a second hand smoke detector. Look for the BS kite mark or the CE mark with the standards displayed.

## Where are Self Contained Smoke Detectors Required?

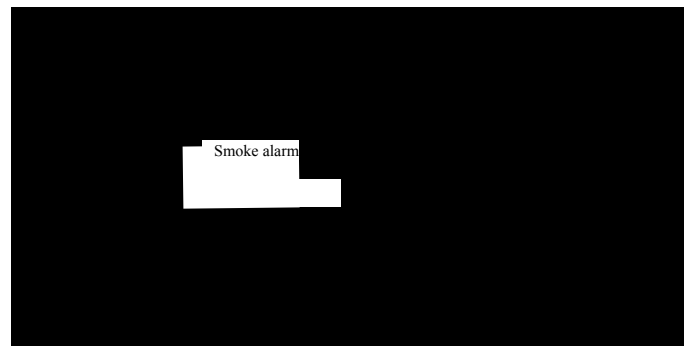
- **All new dwellings;** *NB in all new dwellings the smoke alarms must be permanently wired to an electric circuit which is fused separately at the distribution board or a lighting circuit.*

It is also strongly recommended that detection similar to that of new dwellings is installed within extensions to dwellings

- **In roof space conversions;** (Advice leaflet 4)

It is recommended that the installation of a smoke detector is done by a qualified person to conform to the current IEE Wiring Regulations

Self contained smoke alarms are not recommended for use in areas such as kitchens, garages or places where steam, condensation or fumes could give rise to false alarms. More appropriate and effective detectors are available for such instances e.g. heat detectors.



Position of Smoke Alarms within a Typical Bungalow

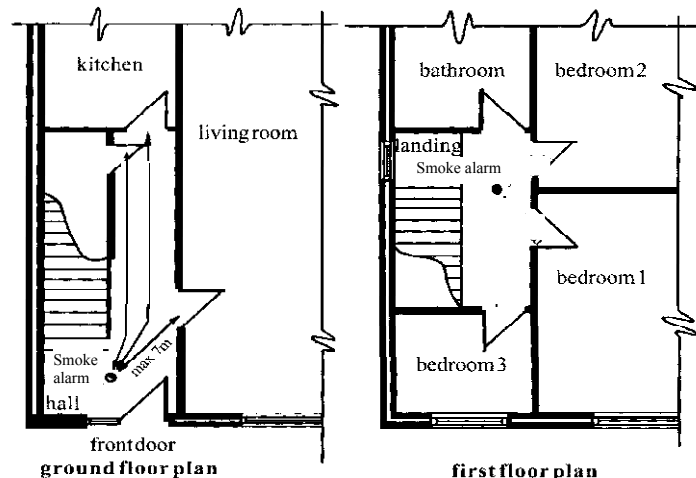


Figure 2  
Position of Smoke Alarms within a Typical House

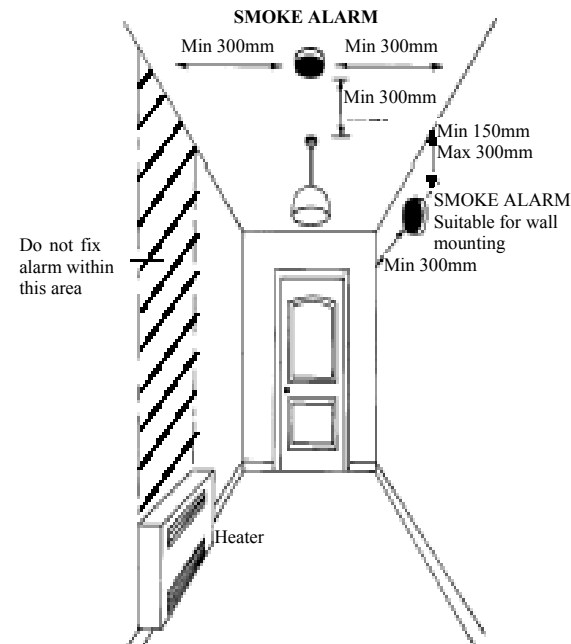
## Location of Smoke Detectors

A high standard of protection can be provided by installing detectors in the kitchen and lounge areas.

In a single storey 2/3 bedroom dwelling, a single smoke detector may be adequate if sited within the main circulation area (Figure 1)

In a typical two storey dwelling smoke detectors should be installed both at ground and at landing levels, and an audible alarm fitted adjacent to the bedroom doors. Therefore at least two smoke alarms will be required (Figure 2).

## Location of Smoke Detectors



Position of smoke alarms within the circulation area

## Maintenance

Building Control has no authority to ensure that smoke alarms are maintained. However it is vitally important that your smoke alarms are regularly checked.

The manufacturers instructions contain the operating, testing and maintenance of the units and these should always be passed on to the occupier of the dwelling for future reference

## Further Information

Further guidance can be obtained from your Local Fire Brigade (see advert in you local telephone directory) or by contacting your local Building Control office