







-  Bromsgrove Council Boundary
-  BDC Parishes
-  All Assessed Sites

Considerations

Historic Environment

- Listed Buildings (points) BDC 2024
-  Conservation Areas 2019
-  Neighbouring CAs
-  Bromsgrove Scheduled Monuments Oct 2019
-  SchedMon within 1km of BDC 2023


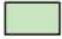



Bromsgrove Registered Parks and Gardens

-  Grade I RPG
-  Grade II* RPG





Air Quality, Contamination & Noise

-  AQMA 2019 clipped to BDC plus 1km






Potentially Contaminated Land [8613]

-  0 - 30 [6791]
-  30 - 180 [381]
-  180 - 280 [591]
-  280 - 410 [695]
-  410 - 1040 [155]



2020 Road Noise LAeq16h England Round 3

-  >=75.0
-  70.0-74.9
-  65.0-69.9
-  60.0-64.9





Natural Environment

-  Bromsgrove Country Parks
-  Ancient Woodland (2019) clipped
-  Local Wildlife Sites (2018) clipped
-  Local Geological Sites (2014) clipped
-  SSSI clipped to BDC plus 1km

SSSI IRZ Apr24 BDC+1km (For Resi)

-  Residential development of 100 units or more.
-  All planning applications (except householder)
-  ALL PLANNING APPLICATIONS
- EXCEPT HOUSEHOLDER APPLICATIONS.
-  ALL PLANNING APPLICATIONS

TPOs

-  T
-  G
-  A
-  W

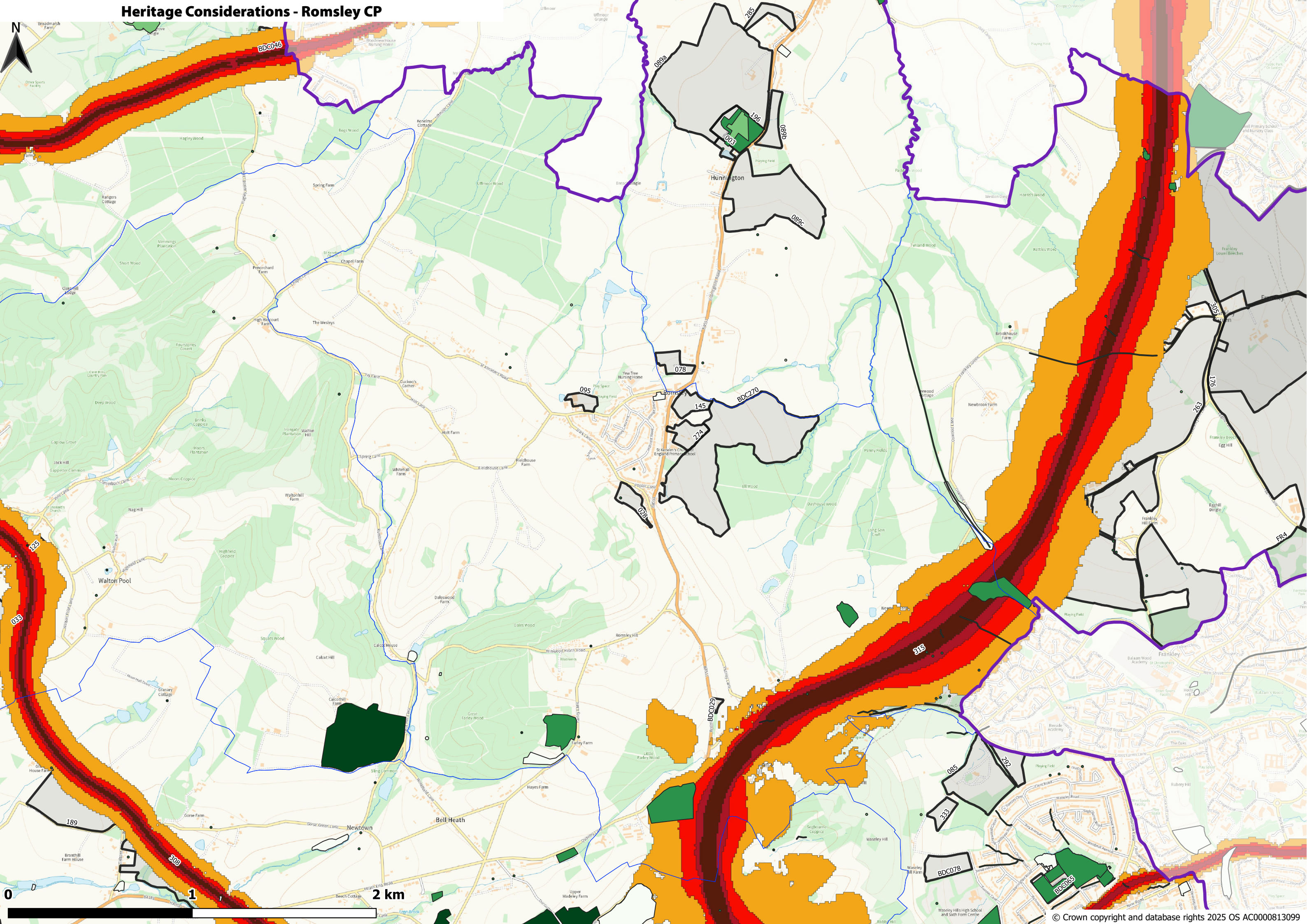
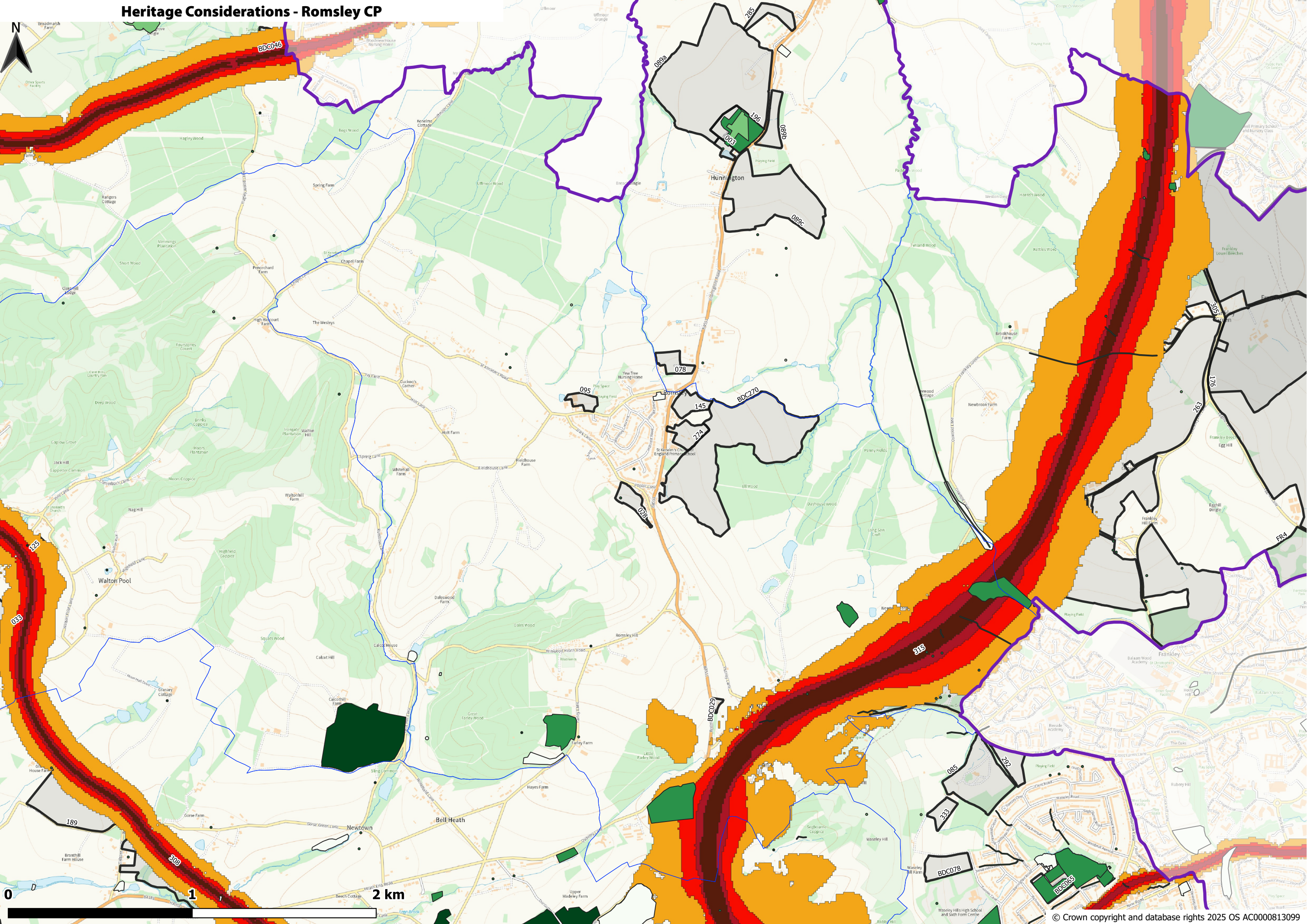
Flooding

-  Flood Zone 3 (FEB 24) BDC+1KM
-  Flood Zone 2 (FEB 24) BDC+1KM

Heritage Considerations - Romsley CP

0 1 2 km

© Crown copyright and database rights 2025 OS AC0000813099

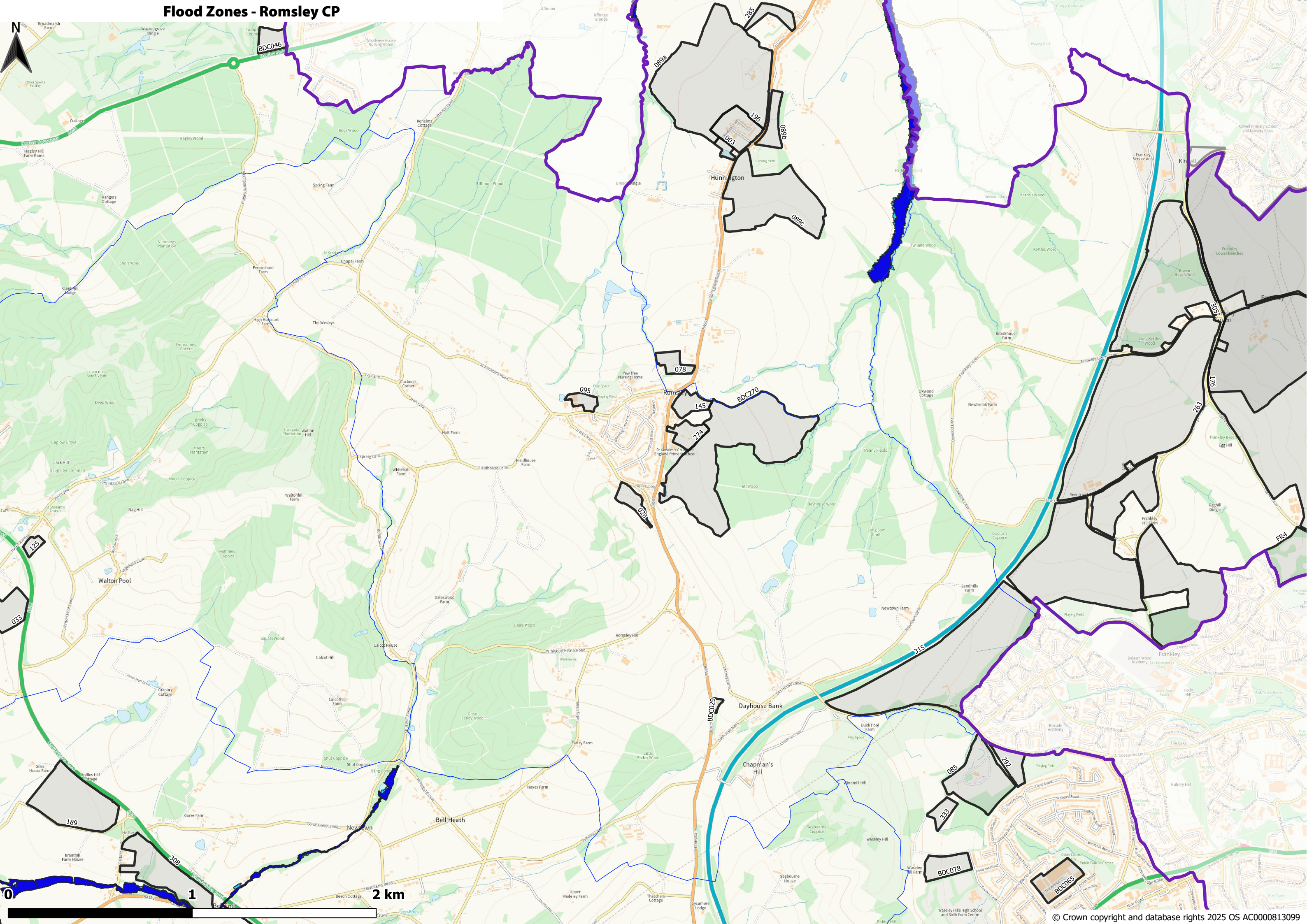


Heritage Considerations - Romsley CP

0 1 2 km

© Crown copyright and database rights 2025 OS AC0000813099

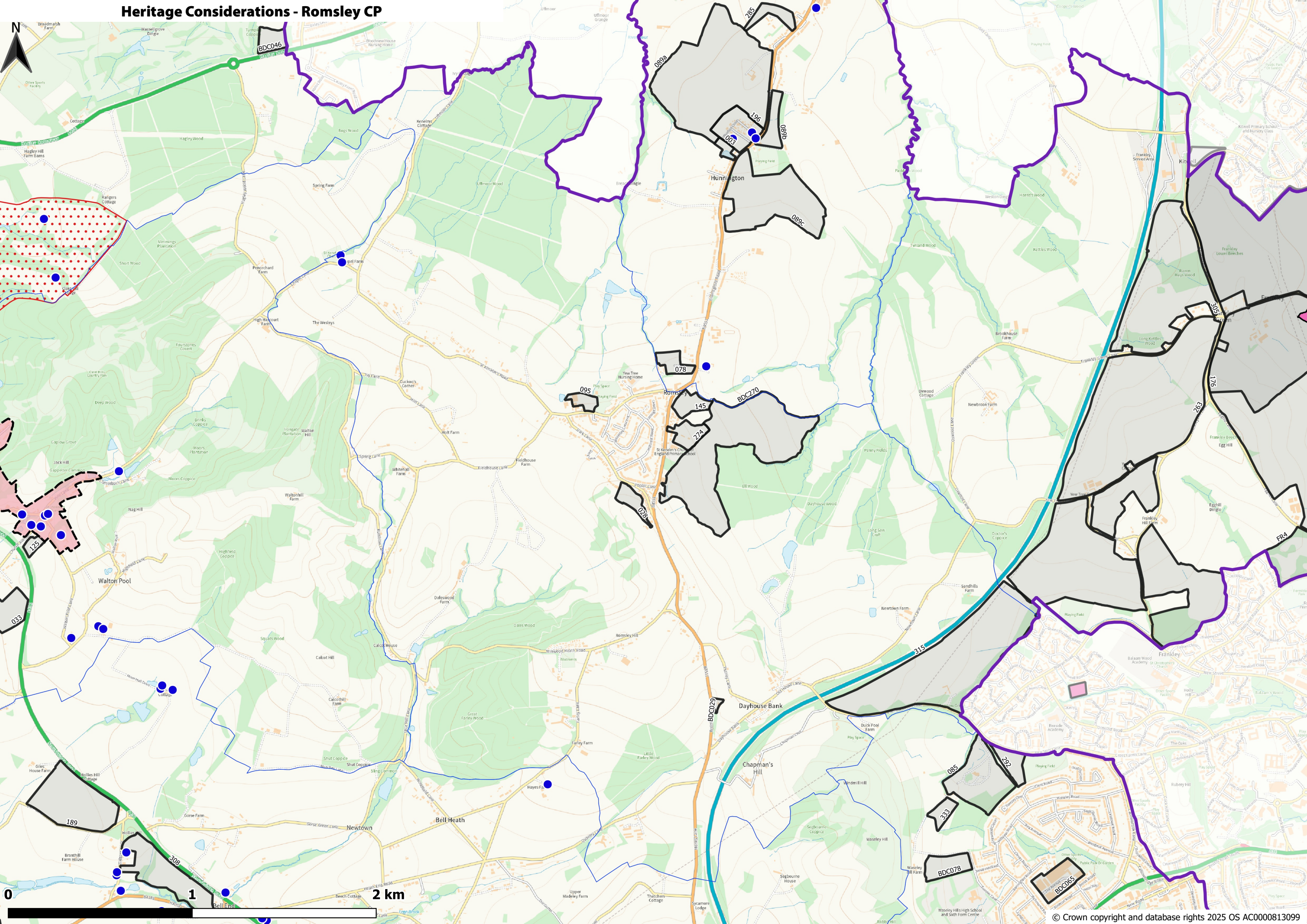
Flood Zones - Romsley CP



Heritage Considerations - Romsley CP

0 2 km

© Crown copyright and database rights 2025 OS AC0000813099

[illegible]

Heritage Considerations - Romsley CP

0 2 km

© Crown copyright and database rights 2025 OS AC0000813099

Heritage Considerations - Romsley CP

The map shows the Romsley Civil Parish (CP) with various land parcels. Key features include:

- Shaded Areas:** Several areas are shaded in grey, indicating heritage considerations. These include a large area in the center-right, a smaller area in the top-left, and a large area in the bottom-left.
- Blue Dots:** Numerous blue dots are scattered across the map, likely representing specific heritage sites or points of interest.
- Scale and Orientation:** A scale bar at the bottom indicates 2 km. A north arrow is located in the top-left corner.
- Map Title:** The title "Heritage Considerations - Romsley CP" is prominently displayed at the top.

© Crown copyright and database rights 2025 OS AC0000813099

Natural Environment Considerations - Romsley CP

Not Including Priority Habitat Designations - See separate habitats map

