



Bromsgrove District Plan

Settlement Hierarchy Background Paper

September 2012



Bromsgrove District Plan

Settlement Hierarchy Background paper

Contents	Page No.
Introduction	3
What is a settlement hierarchy?	3
Aims and Purpose of the Study	3
Policy Context	
National Planning Policy Framework	4
Methodology and data collection	5
Bromsgrove District in Context	5
Identification of settlements	6
Contextual information on each settlement	6
Ranking Criterion and scoring	24
Identification of Settlement Hierarchy based on sustainability	28
Appendix 1	30
Location of assessed settlements	
Appendix 2	31
Key services and facilities in each settlement and scoring	

1. Introduction

1.1 The Bromsgrove District Plan must identify a settlement hierarchy for the District which should be supported by robust evidence. This settlement hierarchy study has therefore been produced as background research and justification for the settlement hierarchy as identified in the Bromsgrove District Plan.

1.2 This paper sets out the background to the settlements within the District including an audit of the services and facilities currently available in each settlement and provides a recommendation as to the appropriate settlement hierarchy for use in the Bromsgrove District Plan. The evidence presented here demonstrates that the Settlement Hierarchy forms the basis of delivering future sustainable growth in the district.

2. What is a settlement hierarchy?

2.1 Settlements have traditionally provided a range of services and facilities to support their population. Generally speaking the larger the settlement in population numbers the greater the amount of services/facilities it provides. As car ownership has increased, for a number of reasons, rural services have tended to decline. The role of the Bromsgrove District Plan is to direct growth to those settlements which have the widest range of services and capacity for development in order to reduce the need to travel.

2.2 A settlement hierarchy therefore ranks settlements according to their size; range of services and facilities; their potential capacity for growth and the policy towards the function of the settlement. The Bromsgrove District Plan identifies the overall levels of growth, town expansion sites and other development sites to accommodate such growth. The amount of growth in each settlement will be linked to the settlement hierarchy. The settlement hierarchy assists in determining the sustainable location of development together with other technical evidence such as the Strategic Housing Land Availability Assessment (SHLAA) and the Area Assessment Studies.

3. Aims and purpose of the Study

3.1 One of the main aims of the Bromsgrove District Plan is the promotion of sustainable communities which will include bringing housing, employment and services closer together and seeking to ensure sustainable travel choices are available. Therefore the majority of the growth is likely to be directed towards the larger settlements which have a wider range of facilities, opportunities for sustainable travel and/or employment opportunities. It should be noted that whilst the hierarchy will indicate the most sustainable locations for development when considering the range of services available, it does not however follow that levels of development will be equal amongst settlements at each level within the hierarchy. There will be other factors that need to be considered in determining what development may be appropriate for each settlement. These include matters such as environmental constraints, the form and layout of each settlement, local needs and the availability of sites.

3.2 Levels of development will be dependent on strategic policy direction, suitable sites being available and other development constraints.

3.3 The settlement hierarchy study will provide information on the sustainability of each settlement by gathering information on what facilities and services are available at each settlement and then comparing the sustainability of each settlement in relation to each other.

3.4 The purpose of defining a Settlement Hierarchy is therefore to help direct new development to the most sustainable locations and to areas with the capacity to accommodate further growth.

4. Policy Context

4.1 National Planning Policy Framework

4.2 Paragraph 15

“All plans should be based upon and contain the presumption in favour of sustainable development as their starting point, with clear policies that will guide how the presumption will be applied locally.”

4.3 Core Planning Principle 12 states that “Planning should take account of and support local strategies to improve health, social and cultural wellbeing for all, and deliver sufficient community and cultural facilities and services to meet local needs.”

4.4 At paragraph 28 it states that *to promote a strong rural economy, local and neighbourhood plans should... promote the retention and development of local services and community facilities in villages, such as local shops, meeting places, sports venues, cultural buildings, public houses and places of worship.*

4.5 Paragraph 70 states;

To deliver the social, recreational and cultural facilities and services the community needs, planning policies and decisions should:

1) Plan positively for the provision and use of shared space, community facilities (such as local shops, meeting places, sports venues, cultural buildings, public houses and places of worship) and other local services to enhance the sustainability of communities and residential environments;

2) Guard against the unnecessary loss of valued facilities and services, particularly where this would reduce the community’s ability to meet its day-to-day needs;

3) Ensure that established shops, facilities and services are able to develop and modernise in a way that is sustainable, and retained for the benefit of the community; and

4) Ensure an integrated approach to considering the location of housing, economic uses and community facilities and services.

5. Methodology and data collection

5.1 The first stage of the study was to determine which settlements were to be considered. This paper identifies all of the main settlements in the District. It does acknowledge that there are other settlements in the District but these have been excluded from this study either due to their location in the Green Belt, relative size and limited availability of local facilities/services such as at Tardebigge, Hunnington and Bordesley. This paper also identifies a range of services and facilities which are considered to indicate the potential sustainability of the settlement. The data has been collected using a variety of sources of information including desk top analysis, existing local knowledge with on site checking where necessary. Some of the Parish Councils have also assisted with collection of information on what services and facilities were available in each area and their help is greatly appreciated and hereby formally acknowledged.

5.2 The settlement hierarchy has been established based on the range of services available within each settlement and on this basis their potential to support housing growth in a sustainable manner. A scoring system has been devised based on the availability of each of the services and facilities in each settlement. Services and facilities considered to be more essential for everyday needs or of great benefit to the sustainability of the settlement have generally been given a score of 2 whereas other uses have been given a score of 1. Miscellaneous facilities have been found in certain settlements often being unique to that settlement. In such cases scores have been based on an assessment of the individual merits of that particular service/facility on the above basis. Greater sensitivity was considered necessary in relation to the scoring of the importance of frequency of both bus and train services and therefore the range of scores from 0-4 allows more sensitive testing of this key accessibility issue.

5.3 It should be noted that this draft document will always be, in effect a living, evolving document, which will be reviewed and updated regularly, dependent on new information becoming available.

6. Bromsgrove District in Context

6.1 Bromsgrove District is situated in north Worcestershire approximately 15 miles (24 km) north of Worcester City and 15 miles (24 km) south of Birmingham City Centre. It covers approximately 21700 hectares (53621.86 acres) and has a population of approximately 93600¹. It contains one main town, Bromsgrove Town and a number of other settlements which vary in size and character. 91% of the District is Green Belt and this designation covers around 20000 hectares of land. Many of the settlements in the District are of a rural nature and in some cases these settlements can be relatively isolated. Settlements work by providing services for a wider area, the bigger the settlement the more services it tends to have.

¹ Based on 2011 Census.

6.2 Over time a settlement hierarchy has been established in the District, with Bromsgrove Town providing most of the services. Generally the smaller settlements have been limited to providing local services and as car ownership has increased, service provision in the smaller settlements has tended to decline. It should be noted however that the Town Centre lies at the heart of the District and although it remains the main retail destination within the District, not all local residents use Bromsgrove town centre as their primary shopping destination. This is partly due to the role and function of the Town centre and partly due to geography. Bromsgrove District is over 20, 000 hectares in size and some of its settlements are comparatively remote to the Town Centre, with other centres outside of the District, such as Stourbridge and Birmingham, lying closer to these outlying settlements. Bromsgrove is not considered to be a strategic centre and its function is seen to cater for the local needs of its residents. This is reflected in the mixture and proportion of uses present such as limited comparison floorspace, convenience shopping, local services, housing, employment, (predominantly retail and service sector but with some light industry), health care facilities, sports centres/leisure facilities and restaurants.

7. Identification of settlements

7.1 Bromsgrove is by far the largest settlement and stands alone at the top of the hierarchy with a different order of services and facilities in comparison to all of the other settlements in the District. The District also contains a range of settlements some larger than others namely Adams Hill, Alvechurch, Barnt Green, Belbroughton, Beoley, Blackwell, Bournheath, Burcot, Catshill, Clent, Copton Hackett, Dodford, Fairfield, Finstall, Hagley, Holy Cross, Hopwood, Lower Clent, Romsley, Rowney Green, Rubery, Stoke Prior and Wythall.

The map at appendix I shows the location of the settlements assessed.

NB

- 1) The settlement populations do not relate to either ward or parish boundaries. They relate to the core developed area of each settlement as indicated on the map at appendix B and based on the 2011 Census.
- 2) The assumption of 3mph walking speed and a 10 minutes walk time (i.e. 800 meters) was used to assess whether a facility is within walking distance.

8. Contextual information on each settlement (settlements identified in alphabetical order)

8.1.1

1) Adams Hill

8.1.2 Population

213

8.1.3. Based on number of households in the core developed area of each settlement which does not relate to ward or parish boundaries, with average household size applied based on 2011 census

8.1.4 Location

8.1.5 Because of the hilly topography of Clent the parish consists of several distinct settlements. These are Upper Clent (around the parish church of St. Leonard and Clatterbach), Lower Clent, Holy Cross, Adams Hill and Walton Pool.

8.1.6 Adams Hill is located 4.13 miles (6.65km) north of Bromsgrove, 1.06 miles (1.7 km) east of Hagley and 1.5 miles (2.43 km) south of Birmingham.

8.1.7 Profile

8.1.8 Adams Hill settlement is located at the foot of the Clent Hills which are currently owned by the National Trust and a popular destination for walkers. It is centred around four main lanes including Adams Hill, Woodman Lane, Violet Lane and Odnall Lane. Adams Hill is included in the Clent Conservation Area.

8.1.9 It is served by several public houses and restaurants. Sunfield Children's Home is located in Adams Hill, a charitable school for children with autism and complex learning needs.

8.1.10 Clent Parochial primary school is the closest local school being approximately half a mile away (0.86 km) in Holy Cross with just over 100 pupils ranging from Reception (age 4) to Year 6 (age 11).

8.2.1

2) Alvechurch

8.2.2 Population

3823

8.2.3 Based on number of households in the core developed area of each settlement which does not relate to ward or parish boundaries, with average household size applied based on 2011 census

8.2.4 Location

8.2.5 Alvechurch is located 5.6 miles (9 km) to the east of Bromsgrove town, and lies approximately 4.7 miles (7.6km) north of Redditch and 11.2 miles (18km) south of Birmingham city centre.

8.2.6 Profile

8.2.7 Alvechurch lies in a bowl within a glaciated valley. On the west side, Scarfield Hill and Coopers Hill are on the rim of the bowl with Grovely and Wast Hills to the north. Eastwards lies Swan Hill and Weatheroak. The River Arrow flows from its source in the nearby Lickey out of the bowl through a narrow gap between Newbourne Hill and Cobley Hill towards Redditch. The centre of Alvechurch lies in a valley surrounded by Hob, Scarfield, Coopers, Hopwood, Wast, Weatheroak and Newbourne Hills.

8.2.8 The Church of St. Laurence, dating back to 900 A.D., sits on a hill within the bowl on the south edge of Alvechurch.

8.2.9 Alvechurch has good transport links including; by road, the A441 and M42; by rail the Redditch/ Lichfield cross city service which run every half an hour and by various bus services including school services and the 146 bus which runs every hour from Redditch to Birmingham. The Worcester and Birmingham canal runs to the west of the settlement.

Some local employment is provided in Hopwood Park M42 motorway services area and the Alvechurch marina. Bordesley Hall is also located to the south of Alvechurch. The centre of Alvechurch itself is a designated Conservation Area and is rural in character.

8.2.10 There are 2 schools including Crown Meadow First School and Alvechurch Church of England Middle School which shares a site with the library.

8.2.11 Alvechurch also has a village hall and a number of local shops catering for everyday needs. Recycling facilities for glass, food/drink cans, mixed textiles, books, newspapers and magazines can be found at the Tanyard Lane car park. There are also several public houses serving food and drinks which also serves as a focus for various community activities.

8.3.1

3) Barnt Green

8.3.2 Population

3348

8.3.3 Based on number of households in the core developed area of each settlement which does not relate to ward or parish boundaries, with average household size applied based on 2011 census

8.3.4 Location

8.3.5 Barnt Green is located approximately 2 miles (3.36km) northeast of Bromsgrove and 1.3 miles (2.18km) south of the Birmingham conurbation.

8.3.6 Profile

8.3.7 Barnt Green is bounded on its north west side by the Lickey Hills and to the east by Bittell Reservoirs. Junction 2 of the M42 motorway is located 3 miles (4.82 km) to the east and junction 4 of the M5 motorway 4 miles (6.43 km) to the west. The main Birmingham to Bristol and Wales railway line and the cross city line from Lichfield to Redditch runs through the centre of Barnt Green.

8.3.8 The commercial centre is located in Hewell Road which contains convenience and comparison shops, doctors and dentists, a post office, bank, solicitors, fast food outlets, restaurants and small businesses.

8.3.9 Barnt Green is served by three churches and large meeting halls which are well used by local community organizations. The settlement also has a first school, day nursery, sports facilities, a park and two public houses namely the Barnt Green Inn and the Victoria.

8.4.1

4) Belbroughton

8.4.2 Population

1032

8.4.3 Based on number of households in the core developed area of each settlement which does not relate to ward or parish boundaries, with average household size applied based on 2011 census

8.4.3. Location

8.3.5 Belbroughton is located 3.52 miles (5.03 km) north east of Bromsgrove town, 0.4 miles (0.60 km) from the eastern boundary of the District with Wyre Forest.

8.4.4 Profile

8.4.5 Belbroughton is a compact settlement nestling in a valley whilst displaying a distinct change in levels in the street pattern. This small settlement is located approximately 0.9 miles (1.47 km) off the A 491 Stourbridge Road, which provides access in a north easterly direction to Hagley, some 2.67 miles (4.30km) away and in a south westerly direction to junction 4 (Lydiate Ash) of the M5 motorway, some 3.12 miles (5.03 km) away.

8.4.6 The core of the settlement runs from the old centre round the church along the High Street to its junction with Hartle Lane where a convenience store, post office and public houses are located. The main development radiates out from here. Like many settlements Belbroughton developed around a church (Holy Trinity) and the settlement was well established by the 11th Century. The centre of the settlement is now a Conservation area and contains notable listed buildings such as the church itself and the church hall.

8.4.7 The Belne Brook, which runs off the nearby Clent Hills and west to join the River Stour, runs through the village and is subject to historic flooding as witnessed in 2008.

8.4.8 Other facilities in the village include a doctors surgery and a recreational centre with tennis courts and a cricket club. There are also a number of public houses in Belbroughton including the Queens, the Talbot, Belbroughton Club and Ye Olde Horseshoe Inn.

8.4.9 Belbroughton C of E primary school also serves the settlement.

8.4.10 Employment in offices at the Nash Works is currently available

8.5.1

5) Beoley

8.5.2 Population

230

8.5.3 Based on number of households in the core developed area of each settlement which does not relate to ward or parish boundaries, with average household size applied based on 2011 census

8.5.4 Location

8.5.5 Beoley is located approximately 5.17 miles (8.32 km) east of Bromsgrove, 0.12 miles (0.20 km) north of Redditch and 4.43 miles (7.13 km) south of Birmingham.

8.5.6 Profile

8.5.7 The parish of Beoley itself is on the border of Warwickshire, which bounds it on the south and east. The road from Bromsgrove to Henley in Arden runs west to east across the south of the parish, meeting the road from Birmingham to Alcester A 456 (The Portway), which runs through the parish near its eastern boundary. The Icknield Street runs from north to south through Beoley, to the west of the Birmingham Road, and forms the western boundary of Beoley Park.

8.5.8 To the north and south the land rises to over 500 ft. Its western boundary is formed by a stream which flows south into the River Arrow. Holt End is the name of the settlement in Beoley Parish but is frequently referred to as Beoley. Holt End is on the site of a considerably larger medieval settlement and has consequently been designated as a Conservation Area. It lies in the floor of a valley with the buildings being strung out along Beoley lane and Holt Hill. The parish Church of St Leonards is located close to Holt End as does Beoley Hall, Beoley Village Hall and Beoley First School. The church stands on rising ground about half a mile to the west of Holt End, with Beoley Hall adjoining the churchyard on the north, the vicarage on the south-west, and on the south-east the house known as St. Leonard's Cottage, which faces onto Bromsgrove Road.

8.5.9. The remains of an earthwork, the Mount is found to the south of the vicarage near Church Hill Farm.

This small settlement contains few everyday facilities apart from the Village Inn public house.

8.6.1

6) Blackwell

8.6.2 Population

1245

8.6.3 Based on number of households in the core developed area of each settlement which does not relate to ward or parish boundaries, with average household size applied based on 2011 census

8.6.4 Location

8.6.5 Blackwell is located approximately 1.32 miles (2.12 km) east of Bromsgrove, and 0.17 miles (.28km) south of the M42 but approximately 1.49 miles (2.40 km) from the nearest junction (1).

8.6.6 Profile

8.6.7 Blackwell is located in the Lickey and Blackwell Parish which straddles the M42. The settlement of Blackwell itself however lies south of the M42. It used to have a train station on the Birmingham and Gloucester Railway, at the summit of the Lickey Incline, however this closed in 1965.

8.6.8 The settlement has a church, St Catherine's and a church hall.

8.6.9 The settlement has one convenience shop Blackwell Village Stores. There is also Blackwell Club which is a licensed social club providing snooker and pool tables and big screen TV facilities.

8.6.10 Blackwell also has a first school and Hunters Hill special school.

8.6.11 Blackwell Court/Adventure located outside the settlement boundary (together with the Golf Club) is a scouting centre owned by the Scout Association. It is a fully equipped outdoor activity centre covering 50 acres of parkland and is located within five minutes of the M42 and M5. It also has an additional 50 acres of land at Pikes Pool.

8.7.1

7) Bournheath

8.7.2 Population

324

8.7.3 Based on number of households in the core developed area of each settlement which does not relate to ward or parish boundaries, with average household size applied based on 2011 census

8.7.4 Location

8.7.5 Bournheath is located 0.79 miles (1.28 km) north west of Bromsgrove. It is approximately 0.21 miles (0.34 km) due west of the M5 motorway although junction 4 at Lydiate Ash is located approximately 1.45 miles (2.3 km) north east of the settlement.

8.7.6 Profile

8.7.7 The majority of this small rural settlement is centred around Fairfield Road, Doctors Hill, Dodford Road and Parish Hill. It has limited local facilities of its own which includes a village hall and several public houses for eg Nailers Arms, The Gate and New Inn.

8.8.1

8) Bromsgrove (Including Lickey End)

8.8.2 Population

36004

8.8.3 Based on number of households in the core developed area of each settlement which does not relate to ward or parish boundaries, with average household size applied based on 2011 census

8.8.4 Location

8.8.5 Bromsgrove Town is the largest settlement and is located approximately 14 miles (22km) southwest of central Birmingham and approximately 14 miles (22km) northeast of Worcester City.

8.8.6 Profile

8.8.7 The M5 and M42 meet to the north of the Town offering good road links to the rest of the country with the A38 and A448 offering good access to neighbouring towns. Bromsgrove train station is located approximately one mile outside the town centre which provides services to a variety of destinations including Birmingham, Hereford and Worcester. At the centre of Bromsgrove lies the historic town centre which is a Conservation Area and provides a range of services and facilities. Bromsgrove's function is viewed as catering for the local needs of its residents. Some of the Districts settlements are however remote from the town centre and although it remains the main retail destination for its residents, not all use Bromsgrove as their primary shopping destination. There are a number of alternative shopping centres relatively close to Bromsgrove with a wider range of shops and facilities, including Redditch (8 miles), Birmingham (14 miles), Worcester (14 miles) and Merry Hill (14 miles). This is reflected in the mixture and proportion of uses present such as limited comparison shopping floorspace, local services, housing, employment (predominantly retail and service sector with some light industry, health care facilities, including a new health centre and the Princess of Wales Hospital, police and fire stations, sports centres, leisure and cultural facilities including the Artrix and various restaurants. The retail accommodation in the Town Centre is mixed, and many small and independent businesses occupy small premises that do not lend themselves to redevelopment. As a result, there is a shortage of suitable larger retail accommodation that suits modern retailing needs. There is also the perception that there is a preponderance of vacant units, lower end retail uses and hot food takeaways and that generally the Town Centre is "rundown". Bromsgrove town centre has relatively few evening economy uses, with those that do exist being generally clustered at the western end of the High Street and on Worcester Road. This area of the Town Centre, being the liveliest at night time, inevitably suffers some disturbance and has the potential to give rise to fear of crime by some resident groups. An Area Action Plan is being prepared for the Town Centre to guide its regeneration. Recycling facilities can be found at Stourbridge Road car park, Somerfields, School Drive car park, Market Hall car park and Recreation Road car park. Other retail areas in Bromsgrove town include a small area of shops at Aston Fields and the Morrisons/ Aldi Stores on the A38.

8.8.8 Bromsgrove town is served by three high schools, four first schools, a special school, three middle schools and North East Worcestershire College.

8.8.9 Bromsgrove Technology Park is located to the south of Bromsgrove town centre but is not yet operating at full capacity. Due to the Districts close proximity to the West Midlands conurbation, many inhabitants in Bromsgrove commute to work in Birmingham.

8.8.10 The District has a high dependence on car ownership and although it benefits from excellent strategic road connections, it does experience localised environmental problems caused by high traffic volumes. The District has four Air Quality Management Areas, one of which is along Hanover Place and Worcester Road within the town centre, and another at Lickey End adjacent to Junction 1 of the M42.

8.9.1

9) Burcot

8.9.2 Population

204

8.9.3 Based on number of households in the core developed area of each settlement which does not relate to ward or parish boundaries, with average household size applied based on 2011 census

8.9.4 Location

8.9.5 Burcot is located 0.73 miles (1.18 miles) east of Bromsgrove and 1.01 miles (1.63km) south east of junction 1 of the M42 motorway.

8.9.6 Profile

8.9.7 This small settlement has few local facilities apart from Burcot village hall and Burcot garden centre which also provides a source of local employment. Recycling facilities for glass, cans, textiles, paper and card are found in the garden centre.

8.10.1

10) Catshill/ Marlbrook

8.10.2 Population

8551

8.10.3 Based on number of households in the core developed area of each settlement which does not relate to ward or parish boundaries, with average household size applied based on 2011 census

8.10.4 Location

8.10.5 Catshill is located approximately ½ mile(0.9km) to the north of Bromsgrove Town and 1.7 miles(2.7km) south west of the Birmingham conurbation.

8.10.6 Profile

8.10.7 The Catshill settlement is located in close proximity to both the M5 motorway, which runs to the west and north of Catshill, with junction 4 being 0.68 miles (1.09km) to the north of the settlement and the M42 motorway, which runs to the south, with junction 1 being 0.4 miles (0.6km) to the south of the settlement.

8.10.8 Catshill is served by nursery, first, middle schools and a special school. There are also several areas of shops providing a range of services.

and several public houses. Catshill is also served by doctors and dental surgeries. Catshill has various places for worship, a village hall and a library. Recycling facilities for glass, cans, paper and card are provided at the Crown Inn and the Marlbrook public house

8.11.1

11) Clent

8.11.2 Population

144

8.11.3 Based on number of households in the core developed area of each settlement which does not relate to ward or parish boundaries, with average household size applied based on 2011 census

8.11.4 Location

8.11.5 Clent is located 4.6 miles (7.4 km) north west of Bromsgrove, 1.14 miles (1.83 km) east of Hagley and 1.68 miles (2.71 km) south of the Birmingham conurbation.

8.11.6 Profile

8.11.7 Because of the hilly topography, Clent parish consists of several distinct rural settlements strung out at the foot of the Clent Hills. These are Upper Clent (around the parish church of St. Leonard and Clatterbach), Lower Clent, Holy Cross, Adams Hill and Walton Pool. Adams Hill, Lower Clent and Clent are all included in Clent Conservation Area. The Clent Hills which are the highest range of hills in the District being over 1000 feet above sea level. They are currently owned by the National Trust and are a popular destination for walkers.

8.11.7 The settlement of Clent itself is located approximately 0.05 miles away from the A491 which provides access to Hagley and junction 4 of the M5 at Lydiate Ash.

8.11.8 St Leonards Church is located in Clent and which dates from the 12th century.

8.11.9 There is also a small primary school located in Holy Cross, called Clent Parochial Primary School, with just over 100 pupils ranging from Reception (age 4) to Year 6 (age 11). There is also an Indian restaurant 'Jaipur' and The Vine public house.

8.12.1

12) Cofton Hackett

8.12.2 Population

1641

8.12.3 Based on number of households in the core developed area of each settlement which does not relate to ward or parish boundaries, with average household size applied based on 2011 census

8.12.4 Location

8.12.5 Cofton Hackett is located adjacent and south of the boundary with Birmingham at Rednal, adjacent and east of the Lickey Hills and approximately 3 miles (4.85 km) north east of Bromsgrove Town.

8.12.6 Profile

8.12.7 Cofton Hackett is reasonably well served by road networks, rail links and bus routes which give access to the main destinations of Birmingham, Bromsgrove and Redditch. The cross city railway line runs to east of settlement with nearest station being at Longbridge.

8.12.8 Cofton Hackett provides a range of shops including a newsagents, food shops and a post office on Parsonage Drive. It also has the benefit of a library, a village hall, the Oak Tree pub and Rednal social club. The settlement is served by Lickey primary school and is approximately 1.5 miles (2.45 km) from Longbridge where the new Bournville college is located. St Michael's church is located in Cofton Church Lane and the Manor House Cofton Hall. The nearest potential source of employment is found at Longbridge

8.13.1

13) Dodford

8.13.2 Population

324

8.13.3 Based on number of households in the core developed area of each settlement which does not relate to ward or parish boundaries, with average household size applied based on 2011 census

8.13.4 Location

8.13.5 Dodford is located 1.11 miles (1.8km) Northwest of Bromsgrove. Although only approximately ½ mile (¾ km) from the M5 intersection with the M42, the nearest access to the M5 is junction 4, some 1.5 miles(2.44 km) northeast of the settlement.

8.13.6 Profile

8.13.7 Dodford is a small settlement without an obvious focus, in a largely rural part of north Worcestershire. The main roads bounding the settlement being Warbage lane, Whinfield road and Woodland Road with the settlement being and dissected by Priory Road, Victoria Road and Church Road. It is located in undulating countryside, the lowest point being around Dodford Priory on Priory Road, where two streams meet, one flowing in from the east and the other from the north east. The land rises steeply up Church Road, with a high point at the junction of Church Road and Woodland Road, and also to Whinfield Road from Priory Road. Nutnells Wood bounds Dodford to the north west, west and south west. A stream runs around this boundary to

the north west. Being a chartist settlement Dodford is unique in Bromsgrove (there are five Chartist settlements in the UK) and this has been acknowledged by its designation as a Conservation area.

8.13.8 The area is characterised by its small single storey Chartist cottages, situated in their large plots, only a few of the plots have been further subdivided. Rosedean is the best example of a chartist cottage in England. It is owned by the National Trust and is viewable by appointment. The original grid layout is still obvious as no new roads or cul de sacs have been introduced. The new roads were originally tracks when the settlement was laid out, and although they are now formal roads they are still narrow. This narrowness is emphasised in a number of places by the high hedgerow which is the most dominant feature of the settlement running alongside most of the roads, and in places are six or seven feet high, and can also be 3 or 4 feet thick. Some of the original orchards also remain.

8.13.9 Apart from the cottages other buildings of note are Dodford Priory and associated barn, the church of Holy Trinity and St Mary and the Old Vicarage (now the Tower House).

8.13.10 Service and leisure businesses include a hotel, two public houses, a restaurant and a shop. There are many agricultural and horticultural establishments in the area including pig and poultry farms, garden and plant nurseries and livery stables.

8.13.11 Dodford has a Village hall with community activities and is also served by Dodford first and nursery school.
The nearest GP is found 1.69 miles (2.71km) away in Bromsgrove (town).

8.14.1

14) Fairfield

8.14.2 Population

583

8.14.3 Based on number of households in the core developed area of each settlement which does not relate to ward or parish boundaries, with average household size applied based on 2011 census

8.14.4 Location

8.14.5 Fairfield is located 1.3 miles (2.09 km) north west of Bromsgrove and 1.16 miles (1.86 km) south west of junction 4 of the M5 motorway.

8.14.6 Profile

8.14.7 This small settlement is focussed on the main Stourbridge Road B4091 which is served by a bus route and Wood Lane. St Marks Church, the cemetery and village hall are all located on the Stourbridge Road.

8.14.7 Fairfield has a post office and general store, a first school and a football club together with football pitches. There is also one public house, the Swan Inn which also provides recycling facilities.

8.15.1

15) Finstall

8.15.2 Population

463

8.15.3 Based on number of households in the core developed area of each settlement which does not relate to ward or parish boundaries, with average household size applied based on 2011 census

8.15.4 Location

8.15.5 The settlement of Finstall is located close to Bromsgrove Town to the south east and south of the A448 which runs between Redditch and Bromsgrove.

8.15.5 Profile

8.15.6 Finstall is a small rural settlement forming part of the larger parish of Finstall the latter including Aston Fields and the large residential development the Oakalls. It is located in an accessible location just south of the A448 which runs between Redditch and Bromsgrove.

8.16.7 The settlement itself has few facilities which include a public house, the Cross Inn, shop and place of worship. It is home to Bromsgrove Rugby Football club and is close to other sports facilities such as Bromsgrove Golf club to the north of the A448 and Bromsgrove Cricket, Tennis and Hockey Club nearby in St Godwalds Road.

8.16.8 It is also close to Finstall First School which although in the parish, is not located in the settlement itself. The nearest shops are found at Aston Fields approximately half a mile (0.80km) away and includes a co-operative store, takeaways, a butchers, a hairdressers and various home stores. Employment is located closeby at Birmingham Technology Park, Buntsford Gate. Bromsgrove railway station is located approximately half a mile (0.80km) away.

8.16.1

16) Hagley

8.16.2

Population

6362

8.16.3 Based on number of households in the core developed area of each settlement which does not relate to ward or parish boundaries, with average household size applied based on 2011 census

8.16.4 Location

8.16.5 Hagley lies in the lee of the Clent Hills, some 10 miles (16.09) south-west of the centre of Birmingham, 5.5 miles (8.86km) north of Bromsgrove and 6 miles (9.65km) north-east of Kidderminster. Four large towns are located in relatively close proximity to Hagley including Bromsgrove,

Stourbridge, Halesowen and Kidderminster. Merry Hill Shopping Centre is also located in close proximity being 4 miles away.

8.16.6 Profile

8.16.7 Hagley is accessible by road being served by the A456 (Hagley Road) providing access to Birmingham and Kidderminster and beyond, the A491 providing access to Bromsgrove and Stourbridge and the A449 providing access to Wolverhampton and beyond. Hagley is also served by rail with a railway station located centrally and provides services to Birmingham, Worcester, Kidderminster, Stratford upon Avon, Malvern and London. The settlement is also served by bus services to Bromsgrove, Kidderminster, Stourbridge and Bearwood.

8.16.8 Hagley Conservation Area is centred around the railway station in Station Road and comprises residential properties built during the Victorian and Edwardian periods. The footbridge over the railway line is listed and was used by Hornby as the design for their model railway footbridge. St Saviours church stands at the eastern end of the Conservation Area.

Hagley has three churches, three schools, a medical centre, a library, banks, a post office, shops and restaurants. Recycling facilities can be found at the Badgers Sett car park.

8.16.9 Hagley Hall is located within the settlement and is a Grade I listed building. It is located within a registered historic park and garden which extends to around 180 hectares.

8.16.10 Some existing employment in Hagley is found at Hagley Mews An Air Quality Management Area (AQMA) has been declared on Kidderminster Road.

8.17.1

17) Holy Cross

8.17.2 Population

732

8.17.3 Based on number of households in the core developed area of each settlement which does not relate to ward or parish boundaries, with average household size applied based on 2011 census

8.17.4 Location

8.17.5 Holy Cross is located 6.7 miles (10.78 km) northwest of Bromsgrove town and 1.9 miles (3.05 km) south east of Hagley

8.17.6 Profile

8.17.7 Because of the hilly topography, Clent parish consists of several distinct rural settlements strung out at the foot of the Clent Hills. These are Upper Clent (around the parish church of St. Leonard and Clatterbach), Lower Clent, Holy Cross, Adams Hill and Walton Pool. Holy Cross is separated from the other settlements by the A491 being located on its western side. The A491 provides access to Hagley and junction 4 of the M5 at Lydiate Ash .The

majority of the settlement is focused on the cross-roads of Bromsgrove Road, Church Avenue, Holy Cross Green and Belbroughton Road.

8.17.8 Holy Cross Conservation Area is focused on Bromsgrove Road and Holy Cross Green and contains several listed buildings such as the Catholic church of St Wulstan and St Oswald and the Bell and Cross public house.

8.17.9 There is also a small primary school located in Holy Cross, called Clent Parochial Primary School, with just over 100 pupils ranging from Reception (age 4) to Year 6 (age 11). Other facilities include Clent Club, Bell and Cross public house and restaurant, sports field and play area.

8.17.10 The nearest GP is located 1.19 miles (km) away at Belbroughton. In terms of employment Clent nurseries incorporating a garden centre, café and restaurant is located on the edge of the settlement.

8.18.1

18) Hopwood

8.18.2 Population

597

8.18.3 Based on number of households in the core developed area of each settlement which does not relate to ward or parish boundaries, with average household size applied based on 2011 census

8.18.4 Location

8.18.5 Hopwood is located 5½ miles (8.8 km) northeast of Bromsgrove and 1.2 miles (1.9km) south of the Birmingham conurbation and approximately ½ mile (800m) from junction 2 of the M42 motorway.

8.18.6 Profile

8.18.7 Hopwood is a small settlement located in Alvechurch parish, on the Worcester and Birmingham canal. The settlement is focused mainly on the A441 Birmingham/Redditch Road which runs through the settlement. Hopwood has a hotel/restaurant, village hall, a petrol station which also sells newspapers, and various sports facilities such as Five Ways Old Edwardian sports club, a recreation ground, Kings Norton RFC and Hopwood Cricket Club.

8.18.8 The nearest doctors surgery is located in Alvechurch 1.33 miles away. The nearest schools are also located in Alvechurch.

Hopwood Park motorway Services are located approximately ½ mile away at junction 2 of the M42 motorway which can be accessed locally and where facilities such as a Petrol Station, Waitrose, WH Smith, Starbucks and KFC are found and it also provides a local source of employment. Further employment may also be found at Hopwood Garden Centre.

8.19.1

19) Lower Clent

8.19.2 Population

96

8.19.3 Based on number of households in the core developed area of each settlement which does not relate to ward or parish boundaries, with average household size applied based on 2011 census

8.19.4 Location

8.19.5 Lower Clent is located 1.9 miles (3.11 km) south of West Midlands conurbation, 4.09 miles (6.58 km) north of Bromsgrove and 0.7 miles (1.12 km) south east of Hagley

8.19.6 Profile

8.19.7 Because of the hilly topography, Clent parish consists of several distinct rural settlements strung out at the foot of the Clent Hills. These are Upper Clent (around the parish church of St. Leonard and Clatterbach), Lower Clent, Holy Cross, Adams Hill and Walton Pool.

8.19.8 Lower Clent is located on the northeastern side of the A491 and is focussed around the Bromsgrove Road.

8.19.9 There are limited local facilities including the French Hen public house/restaurant/hotel.

8.19.10 The settlement is served by the 318 bus which runs throughout the day Monday to Saturday serving Stourbridge, Hagley and Bromsgrove..

8.20.1

20) Romsley

8.20.2 Population

1207

8.20.3 Based on number of households in the core developed area of each settlement which does not relate to ward or parish boundaries, with average household size applied based on 2011 census

8.20.4 Location

8.20.5 Romsley is located on the eastern side of the Clent Hills about 4.9 miles (7.9 km) north of Bromsgrove and 4 miles (6.43 km) south of Halesowen.

8.20.6 Profile

8.20.7 Romsley is essentially a rural settlement which commands stunning views over the surrounding countryside. The settlement and wider area attract walkers, campers, and caravaners on the Clent and Walton Hills and on the Cuckoos Corner site.

8.20.8 The main road that runs through Romsley is the B4551 the Bromsgrove Road and the settlement is bounded by 3 principal roads; Bromsgrove Road, Dark Lane and St Kenelms Road. Local amenities include

a post office, general store, butcher, gift shop, two public houses, florists, a country store and a hairdresser.

8.20.9 St Kenelms primary school is located within the settlement. The bus service is provided by the number 007 from Halesowen to Bromsgrove (via Romsley)

8.20.10 Romsley playing field is located to the north of the settlement with a full size football pitch, play equipment, basketball/netball net on a hard surface and skateboarding facilities. The Scout Centre is situated next to the playing fields which caters for Brownies, Guides, Beaver Scouts, Cub Scouts, Scouts and Venture Scouts, and the building can be hired from the Scout Group for other meetings and celebrations.

8.20.11 Romsley Church Hall is located on the Bromsgrove Road within the settlement however St Kenelms Church is located to the north west of the settlement and dates back to the eleventh century.

8.20.12 The closest GP is located 1.8 miles (2.89km) away in Halesowen.

8.21.1

21) Rowney Green

8.21.2 Population

384

8.21.3 Based on number of households in the core developed area of each settlement which does not relate to ward or parish boundaries, with average household size applied based on 2011 census

8.21.4 Location

8.21.5 Rowney Green is located 4.68 miles (7.53 km) east of Bromsgrove, 1.29 miles (2.08 km) north of Redditch, 0.95 miles (1.53 km) southeast of Alvechurch, 0.61 miles (0.99 km) west of A441, 1.34 miles (2.15 km) south of Junction 2 Hopwood Park Services on the M42 motorway.

8.21.6 Profile

8.21.7 Rowney Green is a small rural settlement clustered around Rowney Green Lane commanding views over surrounding countryside and Redditch. It has few local facilities but does have a village hall with adjacent playing field with surfacing, enclosed play area, football pitch, tennis court and sports pavilion.

8.21.8 A local source of employment is Bordesley Hall

8.22.1

22) Rubery

8.22.2 Population

6511

8.22.3 Based on number of households in the core developed area of each settlement which does not relate to ward or parish boundaries, with average household size applied based on 2011 census

8.22.4 Location

8.22.5 Rubery is located 2.8 miles(4.5km) northeast of Bromsgrove and is coterminous with the Birmingham conurbation at Rednal/ Longbridge, situated in south Birmingham.

8.22.6 Profile

8.22.7 Rubery is located in the valley of the Waseley and Lickey Hills, and within the basin of the Callowbrook and thus the River Rea.

8.22.8 It is situated near to Longbridge 1.7 miles (2.7 km) away, where the former Austin Rover car plant was based. This extensive area is now undergoing regeneration in line with the Longbridge Area Action Plan which was adopted in April 2009.

8.22.9 It is accessible by road to Birmingham and Bromsgrove via the A38. It has local bus services providing access to Bromsgrove, Birmingham (every 10 minutes), Redditch, Studley, Worcester and Halesowen. The nearest railway station is located in Longbridge.

8.22.10 Rubery is divided into two areas either side of the A 38. North of the A38 is primarily residential consisting of a sub-area named Waseley. South of the A38 is the High Street (New Road) where Rubery's retail activity is concentrated, there are a variety of shops including a Tesco Metro, a library, banks etc as well as an extensive residential area.

8.22 11 Great Park is located within walking distance approximately a half a mile (800m) away in Rednal, which provides numerous leisure activities, namely a cinema, bowling alley, bingo, health club, various restaurants, a hotel and supermarket.

8.22.12 Rubery has a number of schools catering for different ages including Holywell primary School, Waseley Hills High School, Reaside Junior School, Rednal Hill Junior School and Beaconside primary/ nursery school. The newly constructed Bournville College is also located nearby in Longbridge.

8.22.13 Local employment is found in the numerous retail establishments, The Avenue offering offices and light manufacturing uses and nearby Birmingham.

8.23.1

23) Stoke Prior

8.23.2 Population

1694

8.23.3 Based on number of households in the core developed area of each settlement which does not relate to ward or parish boundaries, with average household size applied based on 2011 census

8.23.4 Location

8.23.5 Stoke Prior is located 1 mile (1.60 km) south west of Bromsgrove, 2.7 miles (4.34 km) from the Junction 5 of the M5 motorway and adjacent and east of the boundary with Wychavon District.

8.23.6 Profile

8.23.7 Stoke Prior is small settlement located just south west of Bromsgrove town. It is dissected northeast to southwest by the Worcester and Birmingham canal and railway line. The residential development lies mainly north of this line and the employment uses found predominantly at Harris and Saxon Business Park lie to the south. Harris and Saxon Business Park has historical connections with L G Harris Ltd a local paint brush manufacturer (known locally as "Harris Brush" or just "The Brush"). The settlement is served by 3 public houses and a small area of shops in Ryefields Road which provides a supermarket, butchers, post office and hairdressers. A medical centre is also located closeby adjacent to Stoke Prior first school. Recycling facilities can be found at Stoke Prior social club.

8.23.8 The Village hall and Church of St Michael are located to the north of the settlement.

8.23.9 There is an hourly 141 bus service Monday to Saturday from Droitwich to Bromsgrove.

8.24.1

24) Wythall (including Drakes Cross/ Hollywood and Grimes Hill)

8.24.2 Population

7526 + 2085= 9611

8.24.3 Based on number of households in the core developed area of each settlement which does not relate to ward or parish boundaries, with average household size applied based on 2011 census

8.24.4 Location

8.24.5 Wythall is located approximately 7.8 miles (12.59 km) to the north east of Bromsgrove and is located in the north eastern corner of the District and County. It borders Birmingham and Solihull and is 6 miles (9.65km) south of Birmingham City Centre.

8.24.6 Profile

8.24.7 The nearby A435 runs north/ south between Redditch and Birmingham. The M42 motorway runs to the south of the settlement and junction 3 is located 1.2 miles (2km) south of Grimes Hill.

8.24.8 Bus services are available to Redditch, Solihull and Birmingham.

8.24.9 Wythall railway station provides train services to Birmingham, Hereford, Worcester, Stourbridge, Leamington Spa, Stratford upon Avon and London and Whitlocks End railway station located approximately 1.24 miles (2

km) east of Wythall, but located in Solihull MBC, provides an alternative railway station on the same line but with parking facilities.

8.24.10 The settlements are served by a variety of shops located in several local shopping parades. These provide for a range of everyday needs including food outlets, newsagencies, post offices, pubs and takeaways etc. There are also medical facilities such as doctors, dentists and pharmacies.

8.24.11 Community facilities include a library, a community centre, a recreational park, churches and various schools catering for different ages including Meadow Green First School, Coppice Primary School and Woodrush High School/ Sixth Form. Recycling facilities can be found at the Packhorse Inn Public house.

8.24.12 There is also a transport museum closeby (but outside the settlement) which houses a collection of historic buses and battery electric vehicles.

8.24.13 Some local employment is found at Becketts Farm, which provides a restaurant, shop and conferencing facilities together with the Wythall Business Park.

9.1 Ranking Criterion and scoring

9.2 The key elements assessed to determine accessibility are those which are considered to be the key basic services and facilities required by a person living in a settlement, such as access to food, education, recreation, health care, employment and transport. A settlement without these key elements is more than likely to result in its residents having to travel by private car to be able to access them. Settlements which do contain many of these key elements can be considered generally more sustainable than those which do not. The study attempts to make a factual assessment of the service/facility available now in each settlement. It does not attempt at this level to make an assessment of the capacity of the service/facility to absorb growth and neither does it assess whether such growth would contribute to the long term viability of such a service/facility since it is considered it would be inappropriate to do so in a study of this particular nature. This purpose of this study is to provide the baseline data to enable such an assessment (ie the Infrastructure Delivery Plan) to be made once appropriate growth levels are known.

Criterion used to rank settlements in hierarchy (not in priority order)	Description	Scoring
Bus services:	Where a settlement has more frequent bus services, it can be considered more sustainable as may provide residents with a higher level of accessibility to key service centres and destinations.	
	Bus service half hourly or less	4
	Bus service once an hour or less	3
	Bus service greater than once a day	2
	Bus service less than once a day	1

Rail services:	Where a settlement has more frequent rail services, it can be considered more sustainable as may provide residents with a higher level of accessibility to key service centres and destinations.	
	Rail service half hourly or less	4
	Rail service once an hour	3
	Rail service greater than once a day	2
	Rail service less than once a day	1
Employment	The availability of employment within close proximity to homes can reduce the need to travel	2
Playgroup/ nursery school	The availability of local childcare facilities can be particularly important for working families	2
First/Primary School	Primary schools are an important facility for families with children and have an important role in many local communities. May reduce the need for children to have to travel long distances.	2
Middle School	Access to Middle Schools is important for young people, and in some cases provide facilities for the wider community	2
Secondary/High School	Access to Secondary Schools is important for young people, and in many cases they provide facilities for the wider community	2
Special School	Access to school for special needs may reduce the need for children to have to travel long distances. However a specialist school may have a wider catchment area.	1
Higher education/college	Likely to be found in one central/ focal point. Access to such facilities is important for further education of people of various ages.	2
Community / village/ church hall	Important community facility often providing a base for events and for local organizations and community groups to meet.	2
Place of Worship	Can provide an important role in community cohesion and inclusion	2
library	Local community facility providing information, events, supports education, leisure and provides affordable access to literature and other media material.	2
Mobile library service	Where there is no library a mobile library can reduce need to travel to access this service.	1
Cinema	Likely to be found in one central/ focal point. Provides educational, cultural and recreational entertainment	1
Museum	Likely to be found in one central/ focal point. Provides cultural, conservation and educational facility enabling people to explore collections for inspiration, learning and enjoyment.	1
Theatre	Likely to be found in one central/ focal point. Provides cultural, recreational and educational facility	1
Recycling facilities	Provision of central facilities for recycling may reduce need to travel and encourages sustainable living.	1
Hospital	Likely to be found in one central/ focal point.	2

	Important health care facility.	
NHS Doctors surgery	Doctors surgeries are important healthcare facilities providing for ongoing health needs of residents. The presence of them in rural areas is especially important for less mobile residents.	2
NHS Dental surgery	Dental surgeries are important for general healthcare	1
Pharmacy	Provides supplementary local health care service and allows residents to collect prescriptions locally thereby reducing need to travel	2
Post office	Valuable community facility allowing access to various financial and communication services. Especially important for elderly residents who may not be able to travel outside the settlement or have access to internet services. Unfortunately many local post offices have closed in recent years or are threatened with closure.	2
Bank	Useful for day to day banking needs and can reduce the need for residents to travel.	2
Cash point /ATM	In the absence of a bank or post office the presence of a cash machine can provide important local access to financial services.	2
Convenience store	Important for day to day needs and weekly shopping trips.	2
Comparison store	Comparison goods are goods that consumers buy at infrequent intervals and normally would compare prices before buying eg. TV, fridges, clothes etc. Therefore they are likely to be found in one central/ focal point or to a very limited extent in smaller settlements. However comparison as well as convenience shopping can also occur via the internet, mail order etc	1
Garden centre	Garden centres can be located in urban and rural areas and depending on size can offer not only a range of plants but also in some cases comparison goods and a café/restaurant	1
Petrol station	Provides an important service for both domestic and business use. Most cater for some everyday retail needs and may have ATM's.	2
Public house/restaurant	Apart from serving food and drink, pubs provide a focal point for residents and can assist in community cohesion.	2
Takeaway	Can provide residents with a choice of food outlets.	1
Allotments	Can provide residents with a source of exercise and locally grown food thereby reducing need to travel	1

Children's play area	Children's play areas are valuable for the physical development of young people	2
Playing field/ recreation ground/pitches	Playing fields /recreation grounds are important to encourage outdoor sports and general health and wellbeing. They also often provide a home for local sports teams	2
Parks and gardens	Provides open space for residents to enjoy and allows exercise to take place for informal recreation	2
Sports/social clubs	Provides a source of local entertainment, health and can assist in community cohesion	2
Indoor sports facility	Provides valuable facilities for health, fitness and social purposes.	2
Fire station	Likely to be found in one central/ focal point. Impacts upon response time if settlements are remote from a fire station.	2
Police station	A police station/outpost can help increase a feeling of safety and security, provides a police presence in the settlement, can increase response times to incidents and can reduce the fear of crime.	2
Local policing team	Local policing teams are made up of local policing officers, community support officers and special constables that work with the community to improve the neighbourhood.	1

10. Identification of Settlement Hierarchy based on sustainability

10.1 Individual settlement analysis is contained in appendix 2. This appendix identifies key services and facilities in each settlement and largely scores each settlement against pre-determined criteria.

10.2 The table below provides a summary of these results.

	Settlement name	Population	Sustainability Score
Main Town		30,000+	
	Bromsgrove ²	36004 ³	72
Large settlement		2,500-10,000	
	Alvechurch	3823	53
	Barnt Green	3348	44
	Catshill ⁴	8551	43
	Hagley	6362	66
	Rubery	6511	52
	Wythall ⁵	9611	57
Small settlement		50-2,500	
	Adams Hill	213	8
	Belbroughton	1032	42
	Beoley	230	21
	Blackwell	1245	16
	Bournheath	324	18
	Burcot	204	8
	Clent	144	7
	Cofton Hackett	1641	29
	Dodford	324	15
	Fairfield	583	31
	Finstall	463	21
	Holy Cross	732	21
	Hopwood	597	22
	Lower Clent	96	4
	Romsley	1207	28
	Rowney Green	384	17
	Stoke Prior	1694	25

10.3 From the results of this analysis it is possible to devise a three tier settlement hierarchy for Bromsgrove District. The resultant hierarchy details the main town of Bromsgrove, followed by large settlements and smaller settlements. The settlement hierarchy therefore reflects the sustainable

² Includes Lickey End

³ Based on number of households in the core developed area of each settlement which does not relate to ward or parish boundaries, with average household size applied based on 2011 census

⁴ Includes Marlbrook

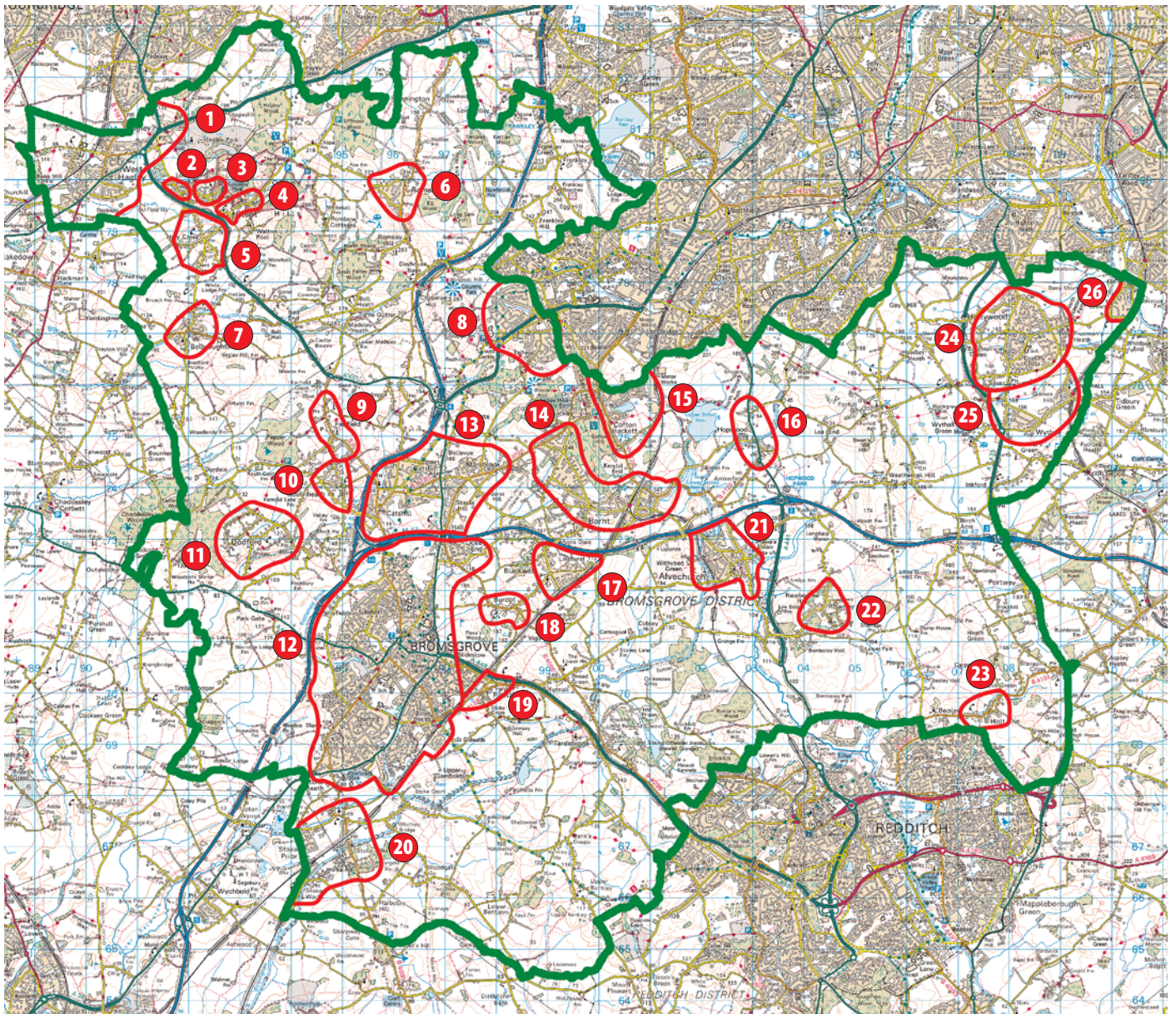
⁵ Includes Drakes Cross, Hollywood and Grimes Hill

regeneration priorities for the District based on the assessment of the facilities and services available in each settlement. It is acknowledged that some anomalies exist with a three tier hierarchy. For example Blackwell, Cofton Hackett and Stoke Prior are not washed over Green Belt settlements and therefore a different policy in relation to growth applies here. It should also be noted that Romsley is quite a large settlement in terms of population, is washed over Green Belt but also due to size of population and level of services/facilities also falls within the third tier. Furthermore some of the smaller settlements have a smaller population but a greater range of services and facilities than Blackwell, Cofton Hackett and Stoke Prior. Therefore it is considered the three tier hierarchy suggested represents the best compromise rather than introducing a fourth arbitrary tier and it is considered that there is sufficient flexibility within policy application for this to be the most appropriate solution.

Settlement type	Name	General description
Main Town (population circa 30,000)	Bromsgrove	The main town in the District with wide range of services and the focus for majority of growth
Large 'Settlement' (population circa 2500-10,000)	Alvechurch Barnt Green Catshill Hagley Rubery Wythall	The next largest settlements which offers reasonable access to public transport opportunities, services and facilities. Potential for strengthening role in meeting future local growth requirements and focus for surrounding communities.
Small 'Settlement' (population circa 50-2500)	Adams Hill Beoley Belbroughton Blackwell Bournheath Burcot Clent Cofton Hackett Dodford Fairfield Finstall Holy Cross Hopwood Lower Clent Romsley Rowney Green Stoke Prior	It is acknowledged that this category does contain some diversity of settlement type for example small rural villages in the Green Belt with very few services and larger areas not in the Green Belt, with a higher population and a greater range of services. However, the evidence in this respect is not entirely consistent. The amount and type of development at each settlement will take other policy considerations into account together with the settlements relative sustainability.

Appendix I

Map showing Settlement Boundaries



© Crown Copyright and database rights 2014. Ordnance Survey 100023519.

Key

- | | | | | | |
|---|--------------|----|----------------|----|--------------------------|
| 1 | Hagley | 9 | Fairfield | 18 | Burcot |
| 2 | Lower Clent | 10 | Bournheath | 19 | Fininstall |
| 3 | Adams Hill | 11 | Dodford | 20 | Stoke Prior |
| 4 | Clent | 12 | Bromsgrove | 21 | Alvechurch |
| 5 | Holy Cross | 13 | Catshill | 22 | Rowney Green |
| 6 | Romsley | 14 | Barnt Green | 23 | Beoley |
| 7 | Belbroughton | 15 | Cofton Hackett | 24 | Drakes Cross & Hollywood |
| 8 | Rubery | 16 | Hopwood | 25 | Grimes Hill |
| | | 17 | Blackwell | 26 | Majors Green |

Appendix 2

Individual Settlement Analysis

Criterion used to rank settlements in hierarchy (not in priority order)	Description	Scoring
Bus services:	Where a settlement has more frequent bus services, it can be considered more sustainable as may provide residents with a higher level of accessibility to key service centres and destinations.	
	Bus service half hourly or less	4
	Bus service once an hour or less	3
	Bus service greater than once a day	2
	Bus service less than once a day	1
Rail services:	Where a settlement has more frequent rail services, it can be considered more sustainable as may provide residents with a higher level of accessibility to key service centres and destinations.	
	Rail service half hourly or less	4
	Rail service once an hour	3
	Rail service greater than once a day	2
	Rail service less than once a day	1
Employment	The availability of employment within close proximity to homes can reduce the need to travel	2
Playgroup/ nursery school	The availability of local childcare facilities can be particularly important for working families	2
First/Primary School	Primary schools are an important facility for families with children and have an important role in many local communities. May reduce the need for children to have to travel long distances.	2
Middle School	Access to Middle Schools is important for young people, and in some cases provide facilities for the wider community	2
Secondary/High School	Access to Secondary Schools is important for young people, and in many cases they provide facilities for the wider community	2
Special School	Access to school for special needs may reduce the need for children to have to travel long distances	1
Higher education/college	Likely to be found in one central/ focal point. Access to such facilities is important for further education of people of various ages.	2
Community / village/ church hall	Important community facility often providing a base for events and for local organizations and community groups to meet.	2
Place of Worship	Can provide an important role in community cohesion and inclusion	2
library	Local community facility providing information, events, supports education, leisure and	2

	provides affordable access to literature and other media material.	
Mobile library service	Where there is no library a mobile library can reduce need to travel to access this service.	1
Cinema	Likely to be found in one central/ focal point. Provides educational, cultural and recreational entertainment	1
Museum	Likely to be found in one central/ focal point. Provides cultural, conservation and educational facility enabling people to explore collections for inspiration, learning and enjoyment.	1
Theatre	Likely to be found in one central/ focal point. Provides cultural, recreational and educational facility	1
Recycling facilities	Provision of central facilities for recycling may reduce need to travel and encourages sustainable living.	1
Hospital	Likely to be found in one central/ focal point. Important health care facility.	2
NHS Doctors surgery	Doctors surgeries are important healthcare facilities providing for ongoing health needs of residents. The presence of them in rural areas is especially important for less mobile residents.	2
NHS Dental surgery	Dental surgeries are important for general healthcare	1
Pharmacy	Provides supplementary local health care service and allows residents to collect prescriptions locally thereby reducing need to travel	2
Post office	Valuable community facility allowing access to various financial and communication services. Especially important for elderly residents who may not be able to travel outside the settlement or have access to internet services. Unfortunately many local post offices have closed in recent years or are threatened with closure.	2
Bank	Useful for day to day banking needs and can reduce the need for residents to travel.	2
Cash point /ATM	In the absence of a bank or post office the presence of a cash machine can provide important local access to financial services.	2
Convenience store	Important for day to day needs and weekly shopping trips.	2
Comparison store	Comparison goods are goods that consumers buy at infrequent intervals and normally would compare prices before buying eg. TV, fridges, clothes etc. Therefore they are likely to be found in one central/ focal point or to a very limited extent in smaller settlements. However comparison as well as convenience shopping can also occur via the internet, mail order etc	1
Garden centre	Garden centres can be located in urban and rural areas and depending on size can offer not only a range of plants but also in some	1

	cases comparison goods and a café/restaurant	
Petrol station	Provides an important service for both domestic and business use. Most cater for some everyday retail needs and may have ATM's.	2
Public house/restaurant	Apart from serving food and drink, pubs provide a focal point for residents and can assist in community cohesion.	2
Takeaway	Can provide residents with a choice of food outlets.	1
Allotments	Can provide residents with a source of exercise and locally grown food thereby reducing need to travel	1
Children's play area	Children's play areas are valuable for the physical development of young people	2
Playing field/ recreation ground/pitches	Playing fields /recreation grounds are important to encourage outdoor sports and general health and wellbeing. They also often provide a home for local sports teams	2
Parks and gardens	Provides open space for residents to enjoy and allows exercise to take place for informal recreation	2
Sports/social clubs	Provides a source of local entertainment, health and can assist in community cohesion	2
Indoor sports facility	Provides valuable facilities for health, fitness and social purposes.	2
Fire station	Likely to be found in one central/ focal point. Impacts upon response time if settlements are remote from a fire station.	2
Police station	A police station/outpost can help increase a feeling of safety and security, provides a police presence in the settlement, can increase response times to incidents and can reduce the fear of crime.	2
Local policing team	Local policing teams are made up of local policing officers, community support officers and special constables that work with the community to improve the neighbourhood.	1

ADAMS HILL

CRITERION	Comments	Score
Bus service half hourly or less		
Bus service once an hour or less		
Bus service more than once a day	197 twice a day Hagley/Clent/ Belbroughton/ Blakedown/ Kidderminster	2
Bus service less than once a day		
Rail service half hourly or less		
Rail service once an hour or less		
Rail service more than once a day		
Rail service less than once a day		
Employment		
Playgroup/nursery school		
First/Primary School		
Middle School		
Secondary/High School		
Special School	✓Sunfield special school (residential)	1
Higher education/college		
Community / village hall		
Place of Worship		
library		
Mobile library service		
Cinema		
Museum		
Theatre		
Recycling facilities		
Hospital		
NHS Doctors surgery		
NHS Dental surgery		
Pharmacy		
Post office	Post box only on Adams Hill	1
Bank		
Cash point /ATM		
Convenience store		
Comparison store	✓Haywood studios (paintings)	1
Garden centre		
Petrol station		
Public house/restaurant	✓The Fountain	2
Takeaway		
Allotments		
Children's play area		
Playing field/ recreation ground/pitches		
Parks and gardens		
Sports/social clubs		
Indoor sports facility	✓Skittle alley at the Fountain	1

Fire station		
Police station/outpost		
Local policing team		
TOTAL		8

ALVECHURCH (validated by Alvechurch PC 19/7/12)

CRITERION	Comments	Score
Bus service half hourly or less		0
Bus service once an hour or less	146 Birmingham to Redditch	3
Bus service more than once a day	83, 843 School services from Redditch to Bromsgrove and Lickey to Redditch (182) and Redditch to Bromsgrove (183)	2
Bus service less than once a day		
Rail service half hourly or less	Trains operate every 30 minutes all day, every day, between Redditch and Birmingham New Street, then continuing to Four Oaks and Lichfield.	4
Rail service once an hour or less		
Rail service more than once a day		
Rail service less than once a day		
Employment	Hopwood Park Services, Alvechurch marina, local shops/ services and Bordesley Hall	2
Playgroup/nursery school	✓ Bear Hill; The Baptist Church; Sandhills	2
First/Primary School	✓Crown Meadow	2
Middle School	✓Alvechurch	2
Secondary/High School	✗	0
Special School	✗	0
Higher education/college	✗	0
Community / village hall	✓Alvechurch Village Hall; The Ark; The Baptist Church Hall	2
Place of Worship	✓ St Lawrence; The Baptist	2
library	✓	2
Mobile library service	✓ Grange lane	1
Cinema	✓ films are occasionally shown at the Ark	1
Museum	✓Alvechurch historical society have a museum once a month in School Lane	1
Theatre	✓Productions are occasionally held in Alvechurch village hall	1
Recycling facilities	✓Tanyard Lane car park	1
Hospital	✗	0
NHS Doctors surgery	✓Alvechurch medical centre	2
NHS Dental surgery	✓1 The Square	1
Pharmacy	✓Lloyds	2
Post office	✓	2
Bank		0
Cash point /ATM	✓ outside Co-op	2
Convenience store	✓ Co-op, butchers x2	2
Comparison store	✓ Joshua Tree gifts, cars	1
Garden centre	✗	0

Petrol station	x	0
Public house/restaurant	✓The Swan; The Red Lion; Dilshad Indian Restaurant	2
Takeaway	✓Trans Chinese takeaway; Dilshad; Tudor Rose fish and chips	1
Allotments	✓Alvechurch PC Old Rectory lane	1
Children's play area	✓ George Road; Crown Meadow; Swans length; The meadows	2
Playing field/ recreation ground/pitches	✓George Road; Crown Meadow; The Meadows	2
Parks and gardens	x	0
Sports/social clubs	✓Alvechurch football; Alvechurch cricket club; Sports and Social Club Radford Road	2
Indoor sports facility	✓Crown Meadow first; Alvechurch middle	0
Fire station	x	0
Police station	x	0
Local policing team	✓	1
other	Alvechurch marina leisure facilities Community advice at Alvechurch Parish Council	2
TOTAL		53

BARNT GREEN (validated by Barnt Green PC 29/7/12)

CRITERION	Comments	Score
Bus service half hourly or less		
Bus service once an hour or less		
Bus service more than once a day	✓145	2
Bus service less than once a day		
Rail service half hourly or less	✓	4
Rail service once an hour or less		
Rail service more than once a day		
Rail service less than once a day		
Employment	Employment in Barnt Green is found primarily in the retail and professional service sectors such as solicitors, financial advice, business services, computer services and estate agents. Also car repairs, heating and plumbing.	1
Playgroup/nursery school	✓Magic Moments, Sandhills, Barnt Green Pre school playgroup	2
First/Primary School	✓St Andrews C of E first	2
Middle School	x	0
Secondary/High School	x	0
Special School	x	0
Higher education/college	x	0
Community / village hall	✓Friends meeting House, Barnt Green Baptist church, St Andrews Parish centre	2
Place of Worship	✓Baptist Church, Friends meeting House and St Andrews CoE	2
library	x	0
Mobile library service	✓fortnightly	1
Cinema	x	0
Museum	x	0

Theatre	x	0
Recycling facilities	x	0
Hospital	x	0
NHS Doctors surgery	✓Barnt Green surgery	2
NHS Dental surgery	✓A M Williams and Associates and Barnt Green Dental Care	1
Pharmacy	✓Lloyds	2
Post office	✓	2
Bank	x	0
Cash point /ATM	✓Outside Tesco express (24 hour), PO	2
Convenience store	✓ Tesco Express 10-6pm, butchers, greengrocers	2
Comparison store	✓clothes, antiques, gifts, hardware, carpets, Acorns, curtains, dry cleaning/laundrette, florist, furniture, off licence, sports, hairdressers	1
Garden centre	x	0
Petrol station	x	0
Public house/restaurant	✓Victoria, Deedar, Deli and cafe and Barnt Green Inn	2
Takeaway	✓Happy Valley (Chinese), Deedar (Indian), Peters pan (fish and chips)	1
Allotments	✓	1
Children's play area	✓Millennium park	2
Playing field/ recreation ground/pitches	✓Parkers Piece	2
Parks and gardens	✓ Millennium park	2
Sports/social clubs	✓Barnt Green Sports Club, Barnt Green cricket club, Barnt Green sailing club	2
Indoor sports facility	✓ Barnt Green Sports Club	2
Fire station	x	0
Police station/outpost	x	0
Local policing team	x	0
Other	Health and beauty related services such as opticians, physiotherapy, pilates, beautician hairdressers and podiatrist. After school clubs, Barnt Green Scouts and Guides . Community advice at Barnt Green Parish Council	2
TOTAL		44

BELBROUGHTON (validated by Belbroughton PC 21/8/12)

CRITERION	Comments	Score
Bus service half hourly or less		
Bus service once an hour or less	X50 hourly 318 hourly	3
Bus service more than once a day		
Bus service less than once a day		
Rail service half hourly or less		
Rail service once an hour or less		
Rail service more than once a day		
Rail service less than once a day		

Employment	✓Saw Mill Hartle Lane/ Aladdins Cave, Nash Works	2
Playgroup/nursery school	✓Little gems Kids Club pre and after school care at Belbroughton Primary school Belbroughton Toddlers, church hall Belbroughton First Steps	2
First/Primary School	✓Belbroughton Primary	2
Middle School		
Secondary/High School		
Special School		
Higher education/college		
Community / church/ village hall	✓Belbroughton Church hall, Church office, Recreation Building, Parish Rooms	2
Place of Worship	✓Holy Trinity	2
library	✓telephone box book exchange	1
Mobile library service		
Cinema		
Museum		
Theatre		
Recycling facilities	✓in The Talbot car park	1
Hospital		
NHS Doctors surgery	✓The Glebeland with dispensary	2
NHS Dental surgery		
Pharmacy	✓Dispensary at The Glebeland surgery	1
Post office	✓High St and various post boxes	2
Bank		
Cash point /ATM	✓Outside McColls and post office	2
Convenience store	✓McColls convenience store and Charles Jordan butchers	2
Comparison store	✓Hi-Fi r/o McColls	2
Garden centre	High Bank Nurseries Brookfield Nurseries Beachcroft Nurseries	1
Petrol station		
Public house/restaurant	✓Horseshoe, Talbot, Queens	2
Takeaway	✓From the Talbot	1
Allotments	✓ by Tennis club (BUC allotments)	1
Children's play area	✓in recreation ground with skate park	2
Playing field/ recreation ground/ pitches	✓Recreation ground, playing field and pitches	2
Parks and gardens	✓High St	2
Sports/social clubs	✓Belbroughton Club with outdoor bowls Tennis Club, Cricket Club	2
Indoor/outdoor sports facility	✓Tennis Club	2
Fire station		
Police station/outpost		
Local policing team	✓	1
Other		
TOTAL		42

BEOLEY (validated by Beoley PC 3/7/12)

CRITERION	Comments	Score
Bus service half hourly or less		
Bus service once an hour or less		
Bus service more than once a day	197 twice a day Hagley/Kidderminster 318 7 buses a day Stourbridge/Morrisons	2

Bus service less than once a day		
Rail service half hourly or less		
Rail service once an hour or less		
Rail service more than once a day		
Rail service less than once a day		
Employment		
Playgroup/nursery school		
First/Primary School	✓	2
Middle School		
Secondary/High School		
Special School		
Higher education/college		
Community / church/ village hall	✓	2
Place of Worship	St Leonards, outside settlement	1
library		
Mobile library service		
Cinema		
Museum		
Theatre		
Recycling facilities		
Hospital		
NHS Doctors surgery		
NHS Dental surgery		
Pharmacy		
Post office		
Bank		
Cash point /ATM		
Convenience store	Beoley Garage store	2
Comparison store		
Garden centre		
Petrol station	Beoley garage	2
Public house/restaurant	✓The Village Inn, Cross and Bowling Green, Rose and Crown	2
Takeaway		
Allotments		
Children's play area		
Playing field/ recreation ground/ pitches	✓Parish Field	2
Parks and gardens		
Sports/social clubs		
Indoor sports facility		
Fire station		
Police station/outpost		
Local policing team		
TOTAL		15

BLACKWELL

CRITERION	Comments	Score
Bus service half hourly or less		
Bus service once an hour or less		
Bus service more than once a	145 Bromsgrove/Redditch 3 x a day	2

day		
Bus service less than once a day		
Rail service half hourly or less		
Rail service once an hour or less		
Rail service more than once a day		
Rail service less than once a day		
Employment		
Playgroup/nursery school		
First/Primary School	✓	2
Middle School		
Secondary/High School		
Special School	✓	1
Higher education/college		
Community / church/ village hall	✓	2
Place of Worship	✓St Catherines	2
library		
Mobile library service		
Cinema		
Museum		
Theatre		
Recycling facilities		
Hospital		
NHS Doctors surgery		
NHS Dental surgery		
Pharmacy		
Post office	Post box outside village stores	1
Bank		
Cash point /ATM		
Convenience store	✓Blackwell village stores	2
Comparison store		
Garden centre		
Petrol station		
Public house/restaurant		
Takeaway		
Allotments		
Children's play area		
Playing field/ recreation ground/pitches		
Parks and gardens	✓	2
Sports/social clubs	✓Blackwell Club	2
Indoor sports facility		
Fire station		
Police station/outpost		
Local policing team		
Other	Golf Club, WI, Scouts Blackwell Court, Burcot Grange Residential Care home	2
TOTAL		18

BOURNHEATH (validated by Bournheath PC 31/7/12)

CRITERION	Comments	Score
Bus service half hourly or less		
Bus service once an hour or		

less		
Bus service more than once a day		
Bus service less than once a day	322 twice a day twice a week Bromsgrove/ Dodford/ Fairfield/ Catshill	1
Rail service half hourly or less		
Rail service once an hour or less		
Rail service more than once a day		
Rail service less than once a day		
Employment	✓Bumble Hole Foods (egg producers) adjacent to settlement	2
Playgroup/nursery school	✓Bright Minds (Montessori Nursery) Mother and Toddlers at Bournheath village hall	2
First/Primary School		
Middle School		
Secondary/High School		
Special School		
Higher education/college		
Community / church/village hall	✓Bournheath Community/village hall Claypit lane	2
Place of Worship	✓Bournheath Methodist church	2
library		
Mobile library service		
Cinema		
Museum		
Theatre		
Recycling facilities		
Hospital		
NHS Doctors surgery		
NHS Dental surgery		
Pharmacy		
Post office	Post box and telephone box	1
Bank		
Cash point /ATM		
Convenience store		
Comparison store		
Garden centre		
Petrol station		
Public house/restaurant	✓New Inn, Nailor Arms , The Gate	2
Takeaway		
Allotments		
Children's play area	✓ Bournheath recreation ground Claypit Lane	2
Playing field/ recreation ground/pitches	✓ Bournheath recreation ground Claypit Lane	2
Parks and gardens		
Sports/social clubs		
Indoor sports facility		
Fire station		
Police station/outpost		
Local policing team		
other	Livery stables Whittings Nursery (landscaping) Blue Cross animal sanctuary Bournheath wholesale nurseries	2

TOTAL		18
--------------	--	-----------

BROMSGROVE

CRITERION	COMMENTS	SCORE
Bus service half hourly or less	Bromsgrove's bus station is located in the town centre. Bromsgrove town is served by numerous buses of varying frequencies and to a variety of destinations	4
Bus service once an hour or less		
Bus service more than once a day		
Bus service less than once a day		
Rail service half hourly or less	Bromsgrove's railway station is located to the south of the town. An hourly service is provided by London Midland during the day with increased frequency at peak times serving Hereford/ Malvern/ Worcester/ Kidderminster/ Hagley/ Bromsgrove/ Barnt Green/ Birmingham New Street.	4
Rail service once an hour or less		
Rail service more than once a day		
Rail service less than once a day		
Employment	Bromsgrove provides employment opportunities for a range of sectors and on a range of sites for example the range of employment opportunities including the retail, commercial, public service sectors and employment sites can be found to the south of the town at Bromsgrove Technology Park and Buntsford Gate.	2
Playgroup/Nursery school	Bromsgrove is served by 11 nursery schools and 6 playgroups	2
First/Primary School	There are 8 primary schools in Bromsgrove (25 in Bromsgrove district).	2
Middle School	3 middle schools	2
Secondary/High School	3 secondary/high schools	2
Special School	✓	1
Higher education/college	✓	2
Community centre / church/village hall	6 halls	2
Place of Worship	5 places of worship	2
library	✓	2
Mobile library service	Sidemoor and Charford served	1
Cinema	Artrix	1
Museum	Avoncroft Museum	1
Theatre	Artrix	1
Recycling facilities	4 recycling sites	1
Hospital	Princess of Wales Community Hospital –in-patient care is provided for patients not requiring the high tech facilities of an Acute Hospital	2
NHS Doctors surgery	✓	2
NHS Dental surgery	✓	1
Pharmacy	✓	2
Post office	✓	2
Bank	✓	2
Cash point /ATM	✓	2
Convenience store	✓	2
Comparison store	✓	2
Garden centre	x	0
Petrol station	✓	2
Public house/restaurant	✓	2

Takeaway	✓	1
Allotments	✓	1
Children's play area	✓	2
Playing field/ recreation ground/pitches	✓	2
Parks and gardens	✓	2
Sports/social clubs	✓	2
Indoor sports facility	✓	2
Fire station	✓	2
Police station	✓	2
Local policing team	✓	1
TOTAL		72

BURCOT

CRITERION	Comments	Score
Bus service half hourly or less		
Bus service once an hour or less		
Bus service more than once a day	145 3 daily buses	2
Bus service less than once a day		
Rail service half hourly or less		
Rail service once an hour or less		
Rail service more than once a day		
Rail service less than once a day		
Employment	✓ Burcot garden centre, Burcot Forge- stained glass makers	2
Playgroup/nursery school		
First/Primary School		
Middle School		
Secondary/High School		
Special School		
Higher education/college		
Community / church/ village hall	✓	2
Place of Worship		
library		
Mobile library service		
Cinema		
Museum		
Theatre		
Recycling facilities	✓ At Burcot garden centre	1
Hospital		
NHS Doctors surgery		
NHS Dental surgery		
Pharmacy		
Post office		
Bank		
Cash point /ATM		
Convenience store		
Comparison store		
Garden centre	✓ gifts, plants, clothes, patio furniture, cafe	1
Petrol station		

Public house/restaurant		
Takeaway		
Allotments		
Children's play area		
Playing field/ recreation ground/pitches		
Parks and gardens		
Sports/social clubs		
Indoor sports facility		
Fire station		
Police station/outpost		
Local policing team		
TOTAL		8

CATSHILL/MARLBROOK

CRITERION	Comments	Score
Bus service half hourly or less		
Bus service once an hour or less		
Bus service more than once a day	143 between Redditch and Catshill 318 Morrisons and Stourbridge 007 7 buses a day	2
Bus service less than once a day	142 between Bromsgrove and Lickey End 322 twice a day twice a week	1
Rail service half hourly or less	Nearest train stations at Barnt Green and Bromsgrove	0
Rail service once an hour or less		
Rail service more than once a day		
Rail service less than once a day		
Employment	Limited employment facilities are found in Catshill (Catshill PC)	0
Playgroup/nursery school	✓	2
First/Primary School	✓	2
Middle School	✓	2
Secondary/High School	x	0
Special School	✓	1
Higher education/college	x	0
Community / village hall	✓	2
Place of Worship	✓	2
library	✓	2
Mobile library service	x	0
Cinema	x	0
Museum	x	0
Theatre	x	0
Recycling facilities	✓	1
Hospital	x	0
NHS Doctors surgery	✓	2
NHS Dental surgery	✓	1
Pharmacy	✓	2
Post office	✓	2
Bank	x	0
Cash point /ATM	✓	2
Convenience store	✓	2
Comparison store	✓	1
Garden centre	✓	1

Petrol station	✓	2
Public house/restaurant	✓	2
Takeaway	✓	1
Allotments	x	0
Children's play area	✓	2
Playing field/ recreation ground/pitches	✓	2
Parks and gardens	x	0
Sports/social clubs	✓	2
Indoor sports facility	x	0
Fire station	x	0
Police station/outpost	x	0
Local policing team	✓	2
TOTAL		43

CLENT (validated by Clent PC)

CRITERION	Comments	Score
Bus service half hourly or less		
Bus service once an hour or less		
Bus service more than once a day	197 Hagley/ Kidderminster twice a day	2
Bus service less than once a day		
Rail service half hourly or less		
Rail service once an hour or less		
Rail service more than once a day		
Rail service less than once a day		
Employment		
Playgroup/nursery school		
First/Primary School		
Middle School		
Secondary/High School		
Special School	✓	1
Higher education/college		
Community / village hall		
Place of Worship	✓ St Leonards	2
library		
Mobile library service		
Cinema		
Museum		
Theatre		
Recycling facilities		
Hospital		
NHS Doctors surgery		
NHS Dental surgery		
Pharmacy		
Post office		
Bank		
Cash point /ATM		
Convenience store		
Comparison store		
Garden centre		
Petrol station		
Public house/restaurant	Jaipur Indian restaurant, The Vine PH	2

Takeaway		
Allotments		
Children's play area		
Playing field/ recreation ground/pitches		
Parks and gardens		
Sports/social clubs		
Indoor sports facility		
Fire station		
Police station/outpost		
Local policing team		
TOTAL		7

COFTON HACKETT

CRITERION	Comments	Score
Bus service half hourly or less	45/ 47 every 5 mins Birmingham/ Longbridge	4
Bus service once an hour or less		
Bus service more than once a day	145 Bromsgrove/Redditch 3 daily buses 182/183 Birmingham /Redditch once a day School buses	2
Bus service less than once a day		
Rail service half hourly or less		
Rail service once an hour or less		
Rail service more than once a day		
Rail service less than once a day		
Employment	✓Cofton Centre, Rose and Crown (Conferencing, functions, weddings etc)	2
Playgroup/nursery school		
First/Primary School		
Middle School		
Secondary/High School		
Special School		
Higher education/college		
Community / church/ village hall	✓Village Hall, Barnt Green Road	2
Place of Worship	✓	2
library	✓?	2
Mobile library service		
Cinema		
Museum		
Theatre		
Recycling facilities		
Hospital		
NHS Doctors surgery		
NHS Dental surgery		
Pharmacy		
Post office	✓	2
Bank		
Cash point /ATM		
Convenience store	✓Lifestyle Express	2
Comparison store	✓ALP Electric, hairdressers, tyres, car sales, pet grooming, garden landscaping, lap top	2

	sales/repairs	
Garden centre		
Petrol station		
Public house/restaurant	✓Rose and Crown, Oak Tree	2
Takeaway	✓2 takeaways	1
Allotments		
Children's play area	✓CH Parish Council play area Ashmead Drive	2
Playing field/ recreation ground/pitches		
Parks and gardens	✓Cofton park (in Birmingham) but opposite side of Groveley lane	
Sports/social clubs	✓Rednal Club, Dojo Aikido club Barnt Green Road	2
Indoor sports facility		
Fire station		
Police station/outpost		
Local policing team		
Other	Hopwood Veterinary Centre Rose and Crown Hotel/ conferences/ functions Sewing repairs "Tailor Made" Peachy's cafe	2
TOTAL		29

DODFORD (validated by Dodford PC 12/7/12)

CRITERION	Comments	Score
Bus service half hourly or less		
Bus service once an hour or less		
Bus service more than once a day		
Bus service less than once a day	322 twice a day twice a week	1
Rail service half hourly or less		
Rail service once an hour or less		
Rail service more than once a day		
Rail service less than once a day		
Employment		
Playgroup/nursery school	✓Dodford Nursery Priory Road	2
First/Primary School	✓Dodford First School	2
Middle School		
Secondary/High School		
Special School		
Higher education/college		
Community / church/ village hall	✓Dodford Village hall	2
Place of Worship	✓Holy Trinity and St Marys	2
library		
Mobile library service		
Cinema		
Museum	✓Rosedene National Trust	1
Theatre		
Recycling facilities		
Hospital		
NHS Doctors surgery		

NHS Dental surgery		
Pharmacy		
Post office	Telephone box and post box Priory Road	1
Bank		
Cash point /ATM		
Convenience store		
Comparison store	✓Gates and Railings retail outlet Fockbury Road	1
Garden centre		
Petrol station		
Public house/restaurant	✓The Dodford Inn, Chenna Indian Cuisine, Park Gate Inn, Grafton Manor	2
Takeaway		
Allotments		
Children's play area		
Playing field/ recreation ground/pitches		
Parks and gardens		
Sports/social clubs		
Indoor sports facility		
Fire station		
Police station/outpost		
Local policing team		
Other	Dodford childrens holiday farm	1
TOTAL		15

FAIRFIELD (validated by Fairfield PC)

CRITERION	Comments	Score
Bus service half hourly or less		
Bus service once an hour or less		
Bus service more than once a day	318 Morrisons /Stourbridge	2
Bus service less than once a day	322 twice a day twice a week	1
Rail service half hourly or less		
Rail service once an hour or less		
Rail service more than once a day		
Rail service less than once a day		
Employment	Fairfield Court	2
Playgroup/nursery school	✓pre school at village hall	2
First/Primary School	✓Fairfield First School	2
Middle School		
Secondary/High School		
Special School		
Higher education/college		
Community / church/ village hall	✓Fairfield Village hall	2
Place of Worship	✓St Marks	2
library		
Mobile library service	✓	1
Cinema		
Museum		
Theatre		

Recycling facilities	✓	1
Hospital		
NHS Doctors surgery		
NHS Dental surgery	✓	1
Pharmacy		
Post office	✓	2
Bank		
Cash point /ATM	✓at post office	2
Convenience store	✓Fairfield General Stores	2
Comparison store		
Garden centre		
Petrol station		
Public house/restaurant	✓ The Swan	2
Takeaway	✓from Fairfield stores	1
Allotments	✓	2
Children's play area	✓Fairfield recreation centre	
Playing field/ recreation ground/pitches	✓Fairfield Recreation Ground	2
Parks and gardens		
Sports/social clubs	✓ Fairfield Villa FC	2
Indoor sports facility		
Fire station		
Police station/outpost		
Local policing team		
TOTAL		31

FINSTALL

CRITERION	Comments	Score
Bus service half hourly or less		
Bus service once an hour or less	142/143 Bromsgrove/ Redditch/ Birmingham/ Studley	3
Bus service more than once a day		
Bus service less than once a day		
Rail service half hourly or less		
Rail service once an hour or less		
Rail service more than once a day		
Rail service less than once a day		
Employment		
Playgroup/nursery school	✓Finstall first school	2
First/Primary School		
Middle School	✓(Aston Fields middle school close by)	1
Secondary/High School		
Special School		
Higher education/college		
Community / church/ village hall	✓ Finstall Village Hall	2
Place of Worship	✓ New Life Centre	2
library		
Mobile library service		
Cinema		
Museum		
Theatre		

Recycling facilities		
Hospital		
NHS Doctors surgery		
NHS Dental surgery		
Pharmacy		
Post office	* Post box/ telephone box	1
Bank		
Cash point /ATM		
Convenience store		
Comparison store	✓hairdressers/ soft furnishings	1
Garden centre		
Petrol station		
Public house/restaurant	✓ The Cross Inn	2
Takeaway		
Allotments	Closeby (C/o Drummond Rd/Rigby lane)	1
Children's play area	✓play equipment in playing field	2
Playing field/ recreation ground/pitches	Finstall PC Penmanor playing feild	2
Parks and gardens		
Sports/social clubs	✓RFC Finstall Park	2
Indoor sports facility		
Fire station		
Police station/outpost		
Local policing team		
Other	Bed and Breakfast (Finstall Mount)	1
TOTAL		21

HAGLEY (validated by Hagley PC 5/7/12)

CRITERION	Comments	Score
Bus service half hourly or less		
Bus service once an hour or less	192 Halesowen to Kidderminster	3
Bus service more than once a day	318 Bromsgrove to Stourbridge School services 292, 736, 798	2
Bus service less than once a day		
Rail service half hourly or less		
Rail service once an hour or less	Dorridge/ Great Malvern/ Kidderminster and Stratford upon avon/ Worcester	3
Rail service more than once a day	Kidderminster to London	2
Rail service less than once a day		
Employment	Hagley Mews and local commercial and retail sector	2
Playgroup/nursery school	✓Kindergarten at primary School, playgroup at Hagley Community Centre	2
First/Primary School	✓Hagley primary School, Park Road	2
Middle School	*	0
Secondary/High School	✓Haybridge High School, Brake Lane; Hagley Catholic High School, Brake Lane	2
Special School	*	0
Higher education/college	*	0
Community / village hall	✓Hagley Community Centre Worcester Road owned by Hagley community assciation	2
Place of Worship	✓ St Saviour's Church, Worcester Rd and St John's at Hagley Hall (both C of E) Hagley Free Church, Worcester Road.	2

library	✓ Hagley Library, Worcester Rd DY9 0NW	2
Mobile library service	✓Worcestershire Mobile Library	1
Cinema	✗	0
Museum	✓ Not a museum but there is a stately home in the village – Hagley Hall	1
Theatre	✗	0
Recycling facilities	✓ Badgers Sett car park and door to door collection by BDC	1
Hospital	✗	0
NHS Doctors surgery	✓ Hagley Surgery 1, Victoria Passage,DY8 0NH	2
NHS Dental surgery	✓ Dentist available in Worcester Rd	1
Pharmacy	✓ Co op Pharmacy, Worcester Rd	2
Post office	✓ Within Co op shop, Worcester Rd	2
Bank	✓ Barclays, lloydstsb, Worcester Road	1
Cash point /ATM	✓ Barclays	2
Convenience store	✓ Spar, Co-op	2
Comparison store	✓ Bridalwear, gifts	2
Garden centre	✓ Close by (in Clent Parish) with Hagley address - Webbs	1
Petrol station	✓ Shell c/o Kidderminster Rd/ Worcester Rd	2
Public house/restaurant	✓ The Station Inn, Worcester Rd; The Lytteleton Arms, Bromsgrove Rd, West One Wine Bar, Worcester Road	2
Takeaway	✓ Chip shop, 131 Worcester Rd;. Shenapur Indian Restaurant in Worcester Rd; sandwiches available from Hagley Café, the deli in the village, Spar and the Co op, and also Paddock's Butchers	2
Allotments	✓ Allotments provided by the Parish Council in Church St	2
Children's play area	✓ Children's –playground provided by the Parish Council – on Worcester Rd playing fields.	2
Playing field/ recreation ground/pitches	✓ Provided by the Parish Council at Worcester Rd	2
Parks and gardens	✓	2
Sports/social clubs	✓ Several operating out of the Community Centre – see Hagleyvillage.org	2
Indoor sports facility	✓ Facilities at Haybridge High School	2
Fire station	✗	
Police station/outpost	✓Kidderminster Road	2
Local policing team	✓ Hagley and rural	1
other	The Parish Council also provides a cemetery at Park Rd.	2
TOTAL		66

HOLY CROSS

CRITERION	Comments	Score
Bus service half hourly or less		
Bus service once an hour or less		
Bus service more than once a day	318 7 times a day 197 twice a day	2
Bus service less than once a day		
Rail service half hourly or less		

Rail service once an hour or less		
Rail service more than once a day		
Rail service less than once a day		
Employment		
Playgroup/nursery school	✓	2
First/Primary School	✓	2
Middle School		
Secondary/High School		
Special School		
Higher education/college		
Community / village hall	✓Clent Parish Hall	2
Place of Worship	✓	2
library		
Mobile library service		
Cinema		
Museum		
Theatre		
Recycling facilities		
Hospital		
NHS Doctors surgery		
NHS Dental surgery		
Pharmacy		
Post office		
Bank		
Cash point /ATM		
Convenience store A1	✓ hairdressers	1
Comparison store		
Garden centre	✓ Clent nurseries, café/ restaurant	1
Petrol station		
Public house/restaurant	✓ Bell and Cross	2
Takeaway		
Allotments	✓ Pool Furlong	1
Children's play area	✓	2
Playing field/ recreation ground/pitches	Centenary Fields/pitches	2
Parks and gardens		
Sports/social clubs	✓	2
Indoor sports facility		
Fire station		
Police station/outpost		
Local policing team		
TOTAL		21

HOPWOOD

CRITERION	Comments	Score
Bus service half hourly or less		
Bus service once an hour or less	146 Birmingham/ Hopwood/Alvechurch/Redditch	3
Bus service once a day or more	182/183 once a day	2
Bus service less than once a day		
Rail service half hourly or less		
Rail service once an hour or		

less		
Rail service more than once a day		
Rail service less than once a day		
Employment	✓ at Hopwood services	2
Playgroup/nursery school		
First/Primary School		
Middle School		
Secondary/High School		
Special School		
Higher education/college		
Community / church/ village hall	✓ Hopwood Community centre, Hopwood Village Hall	2
Place of Worship		
library		
Mobile library service		
Cinema		
Museum		
Theatre		
Recycling facilities		
Hospital		
NHS Doctors surgery		
NHS Dental surgery		
Pharmacy		
Post office		
Bank		
Cash point /ATM	✓ at Hopwood services	2
Convenience store	✓ costcutter express in petrol station; Waitrose at Hopwood services	2
Comparison store		
Garden centre	✓	1
Petrol station	✓ The Bridge garage	2
Public house/restaurant	✓ Hopwood Inn; KFC at Hopwood services; Starbucks at Hopwood services; Burger King at Hopwood services	2
Takeaway		
Allotments		
Children's play area	✓ At Hopwood community centre	2
Playing field/ recreation ground/pitches		
Parks and gardens		
Sports/social clubs	✓ 5 Ways Old Edwardians Sports club, cricket club, Kings Norton RFC	2
Indoor sports facility		
Fire station		
Police station/outpost		
Local policing team		
TOTAL		22

LOWER CLENT

CRITERION	Comments	Score
Bus service half hourly or less		
Bus service once an hour or less		
Bus service once a day or more	318 7 buses Bromsgrove/ Catshill/ Belbroughton/ Stourbridge	2

Bus service less than once a day		
Rail service half hourly or less		
Rail service once an hour or less		
Rail service more than once a day		
Rail service less than once a day		
Employment		
Playgroup/nursery school		
First/Primary School		
Middle School		
Secondary/High School		
Special School		
Higher education/college		
Community / village hall		
Place of Worship		
library		
Mobile library service		
Cinema		
Museum		
Theatre		
Recycling facilities		
Hospital		
NHS Doctors surgery		
NHS Dental surgery		
Pharmacy		
Post office		
Bank		
Cash point /ATM		
Convenience store		
Comparison store		
Garden centre		
Petrol station		
Public house/restaurant	✓ French Hen	2
Takeaway		
Allotments		
Children's play area		
Playing field/ recreation ground/ pitches		
Parks and gardens		
Sports/social clubs		
Indoor sports facility		
Fire station		
Police station/outpost		
Local policing team		
TOTAL		4

ROMSLEY(validated by Romsley PC)

CRITERION	Comments	Score
Bus service half hourly or less		
Bus service once an hour or less		
Bus service more than once a day	007 Halesowen/ Bromsgrove	2
Bus service less than once a		

day		
Rail service half hourly or less		
Rail service once an hour or less		
Rail service more than once a day		
Rail service less than once a day		
Employment		
Playgroup/nursery school	✓ St Kenelms C of E	2
First/Primary School	✓ St Kenelms C of E	2
Middle School		
Secondary/High School		
Special School		
Higher education/college		
Community / church/ village hall	✓ St Kenelms Parish Church and village hall	2
Place of Worship	✓ St Kenelms Parish Church	2
library		
Mobile library service	✓	1
Cinema		
Museum		
Theatre		
Recycling facilities	✓Quantry lane	1
Hospital		
NHS Doctors surgery		
NHS Dental surgery		
Pharmacy		
Post office	✓and telephone box	2
Bank		
Cash point /ATM	✓outside Spar	2
Convenience store	✓Spar, butchers, hairdressers, nails	2
Comparison store	✓Fairy Hollow- gift shop	1
Garden centre		
Petrol station		
Public house/restaurant	✓Swallows Nest, The Sun	2
Takeaway		
Allotments	✓Farley Lane	1
Children's play area	✓ St Kenelms plus small skate park	2
Playing field/ recreation ground/pitches	✓	2
Parks and gardens		
Sports/social clubs	✓Scout centre by play area/recreation ground	2
Indoor sports facility		
Fire station		
Police station/outpost		
Local policing team		
TOTAL		28

ROWNEY GREEN

CRITERION	Comments	Score
Bus service half hourly or less		
Bus service once an hour or less		
Bus service once a day or more	182 once a day 183 once a day With seating outside Memorial Peace Hall	2

Bus service less than once a day		
Rail service half hourly or less		
Rail service once an hour or less		
Rail service more than once a day		
Rail service less than once a day		
Employment	✓Bordesley hall	2
Playgroup/nursery school	✓	2
First/Primary School		
Middle School		
Secondary/High School		
Special School		
Higher education/college		
Community / church/ village hall	✓ Peace Memorial Hall Rowney Green pavilion	2
Place of Worship	✓Rowney Green Methodist Church	2
library		
Mobile library service		
Cinema		
Museum		
Theatre		
Recycling facilities		
Hospital		
NHS Doctors surgery		
NHS Dental surgery		
Pharmacy		
Post office	✓Post box only	1
Bank		
Cash point /ATM		
Convenience store		
Comparison store		
Garden centre		
Petrol station		
Public house/restaurant	✓The Goat and Trousers, Rowney Green Peace Hall	2
Takeaway		
Allotments		
Children's play area	✓	2
Playing field/ recreation ground/ pitches	✓Rowney Green playing field	2
Parks and gardens	Peck Wood Rowney Green Bluebell centre	
Sports/social clubs		
Indoor sports facility		
Fire station		
Police station/outpost		
Local policing team		
TOTAL		17

RUBERY

CRITERION	Comments	Score
Bus service half hourly or less	Birmingham to Great Park (61) every 8 mins weekdays or every 10 mins at weekend Solihull to Weoley castle (49) Mon to sat every 20 mins	4

	144 approx.every half hour	
Bus service once an hour or less	Solihull to Weoley Castle (49A) Sun every hour West Heath to Rubery Mon to sat every hour (42) 142/143 approx every hour 202 approx every hour	3
Bus service more than once a day		
Bus service less than once a day		
Rail service half hourly or less	No railway station at Rubery. Nearest one at Longbridge 1.7 miles away	1
Rail service once an hour or less		
Rail service more than once a day		
Rail service less than once a day		
Employment	✓ the Avenue	2
Playgroup/nursery school	✓	2
First/Primary School	✓	2
Middle School	✓ no middle school as such but age group 9-13 covered as 2 tier system	2
Secondary/High School	✓Waseley Hills	2
Special School	x	0
Higher education/college	Bournville college at Longbridge within 1.7 miles	1
Community / village hall	Rubery Community and Leisure Centre	2
Place of Worship	✓ St Chads	2
library	✓	2
Mobile library service	x	0
Cinema	Located within walking distance in nearby Great Park	1
Museum	x	0
Theatre	x	0
Recycling facilities	x	0
Hospital	x	0
NHS Doctors surgery	✓	2
NHS Dental surgery	✓	1
Pharmacy	✓	2
Post office	✓	2
Bank	✓	2
Cash point /ATM	✓	2
Convenience store	✓	2
Comparison store	✓	1
Garden centre	x	0
Petrol station	✓Murco in cock Hill	2
Public house/restaurant	✓Rose and Crown, Indian	1
Takeaway	✓	1
Allotments	x	0
Children's play area	✓ St Chads	2
Playing field/ recreation ground/pitches	✓ St Chads	2
Parks and gardens	x	0
Sports/social clubs	Rubery Community and Leisure Centre Rubery Social Club	2
Indoor sports facility	Colmers Farm school in Birmingham closeby dual use facilities	1

Fire station	x	0
Police station/outpost	✓	2
Local policing team	✓ Rubery and Rural	1
TOTAL		54

STOKE PRIOR

CRITERION	Comments	Score
Bus service half hourly or less		
Bus service once an hour or less		
Bus service more than once a day	141 Droitwich/ Stoke Prior/ Bromsgrove (8 buses a day)	2
Bus service less than once a day	158 Wychbold/ Stoke Prior/ Feckenham/ Redditch	1
Rail service half hourly or less		
Rail service once an hour or less		
Rail service more than once a day		
Rail service less than once a day		
Employment	✓ Saxon and Harris, Shaw Lane Industrial Estate etc	2
Playgroup/nursery school		
First/Primary School	✓ Stoke Prior	2
Middle School		
Secondary/High School		
Special School		
Higher education/college		
Community / church/ village hall	✓	2
Place of Worship	✓	2
library		
Mobile library service		
Cinema		
Museum		
Theatre		
Recycling facilities	✓	1
Hospital		
NHS Doctors surgery	✓	2
NHS Dental surgery		
Pharmacy		
Post office	✓ Stoke Prior	2
Bank		
Cash point /ATM		
Convenience store	✓ Stoke prior PO and convenience	2
Comparison store	✓ Furniture Barn, Craft Centre etc	1
Garden centre		
Petrol station		
Public house/restaurant	✓ Priory café, Navigation Inn	2
Takeaway		
Allotments		
Children's play area		
Playing field/ recreation ground/ pitches	✓ Hanbury Road	2
Parks and gardens		
Sports/social clubs	✓	2
Indoor sports facility		

Fire station		
Police station/outpost		
Local policing team		
TOTAL		25

WYTHALL (validated by Wythall PC 10/7/12)

CRITERION	Comments	Score
Bus service half hourly or less		
Bus service once an hour or less	Solihull to Wythall every hour Mon-Sat (S7) Birmingham to Redditch every hour (X50)	3
Bus service more than once a day	School bus (Wythall to Birmingham50 A)	2
Bus service less than once a day		
Rail service half hourly or less		
Rail service once an hour or less	Train station at Wythall (manned) and at Whitlocks end approx a mile away which also has a large car park Hourly service throughout week (more frequent at peak times serving Birmingham, Stratford upon Avon, Great Malvern, Worcester, Stourbridge and Hereford)	3
Rail service more than once a day		
Rail service less than once a day		
Employment	✓Wythall Business Centre, May Lane Becketts	2
Playgroup/nursery school	✓St Marys playgroup Station Road; The Green Nursery, Station Road; The Wendy House Nursery Chapel lane; Noah's Ark playgroup, Shawhurst lane, Hollywood; Playgroup at HCLC Simms lane, Hollywood.	2
First/Primary School	✓Meadow Green	2
Middle School	✗	0
Secondary/High School	✓Woodrush High School	2
Special School	✗	0
Higher education/college	✓6 th form at Woodrush High School	2
Community / village hall	✓Wythall Village Hall; Park Hall	2
Place of Worship	✓St Aidans; St Marys; Kingswood meeting house;HCLC; Headley Heath New Life church; Wythall Baptist church	2
library	✓ and business centre	2
Mobile library service	✓	1
Cinema	✗	0
Museum	✓Wythall transport museum	1
Theatre	✗	0
Recycling facilities	✓Becketts and Packhorse pub	1
Hospital	✗	0
NHS Doctors surgery	✓Hollyoaks Surgery Hollywood Medical Practice	2
NHS Dental surgery	✗	0
Pharmacy	✓Lloyds and Hollywood chemist	2
Post office	✓ in one stop Darkes Cross and 1 Hollywood Gardens	2
Bank		0
Cash point /ATM	✓outside spar, Texaco garage, Londis, outside one stop shop	2

Convenience store	✓select and save, one stop shop, Spar, Londis, Co-op. see schedule but also Sainsburys etc at Maypole outside settlement in Birmingham but closeby.	2
Comparison store	✓hairdressers, pet shop, Sima warehouse	1
Garden centre	✘	0
Petrol station	✓ Jet, with hair Loft (hairdressers above)Texaco garage	2
Public house/restaurant	✓Packhorse/ White Swan	2
Takeaway	✓Drakes Cross parade, station Road and may Lane	1
Allotments	✓Wythall allotments Packhorse lane	1
Children's play area	✓Wythall Park; Wychwood Road/Hollywood lane; Mayhurst Croft; Wythwood Grove	2
Playing field/ recreation ground/ pitches	✓Wythall House	2
Parks and gardens	✓ Wythall House	2
Sports/social clubs	✓Royal British legion, Wythall House, Woodrush Rugby ClubGolf club	2
Indoor sports facility	✓Woodrush sports centre	2
Fire station	✘	0
Police station/outpost	✓Alcester Road	2
Local policing team	✓	1
TOTAL		57

Errata

February 2014- Appendix I- Map showing Settlement Boundaries

We will consider reasonable requests to provide this document in accessible formats such as **large print, Braille, Moon, audio CD or tape or on computer CD**

"Need help with English?" Contact Worcestershire HUB, Bromsgrove 01527 881288

'Potrzebujesz pomocy z angielskim?' Skontaktuj się z Worcestershire HUB, Bromsgrove, tel.: 01527 881288

"İngilizce için yardıma ihtiyacınız var mı?" 01527 881288 numarayı arayıp Worcestershire HUB, Bromsgrove ile irtibata geçin

"ইংরাজির জন্য সাহায্য চাই ?" 01527 881288 নম্বরে উস্টাশায়ার হাব [HUB] ব্রমস্‌গ্রোভ [Bromsgrove]-এ টেলিফোন করুন

"ਅੰਗਰੇਜ਼ੀ ਵਿਚ ਮੱਦਦ ਚਾਹੁੰਦੇ ਹੋ?" ਵੁਰਸੈਸਟਰਸ਼ਾਇਰ ਹੱਬ [HUB] ਨੂੰ ਬਰੋਮਸਗ੍ਰੋ [Bromsgrove] ਵਿਖੇ 01527 881288 'ਤੇ ਟੈਲੀਫੋਨ ਕਰੋ

"انگریزی میں مدد چاہتے ہیں؟" ورسیسٹر شائر ہب [HUB]، برومزگرو [Bromsgrove] میں 01527 881288 پر رابطہ کریں



Bromsgrove
District Council

www.bromsgrove.gov.uk

● Planning and Regeneration

Strategic Planning

Bromsgrove District Council, The Council House
Burcot Lane, Bromsgrove, Worcestershire B60 1AA

Main Switchboard: (01527) 881288

Fax: (01527) 881313

DX: 17279 Bromsgrove

Email: strategicplanning@bromsgroveandredditch.gov.uk