



-  Bromsgrove Council Boundary
-  BDC Parishes
-  All Assessed Sites

Considerations

Historic Environment

- Listed Buildings (points) BDC 2024
-  Conservation Areas 2019
-  Neighbouring CAs
-  Bromsgrove Scheduled Monuments Oct 2019
-  SchedMon within 1km of BDC 2023


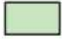



Bromsgrove Registered Parks and Gardens

-  Grade I RPG
-  Grade II* RPG





Air Quality, Contamination & Noise

-  AQMA 2019 clipped to BDC plus 1km






Potentially Contaminated Land [8613]

-  0 - 30 [6791]
-  30 - 180 [381]
-  180 - 280 [591]
-  280 - 410 [695]
-  410 - 1040 [155]

2020 Road Noise LAeq16h England Round 3

-  >=75.0
-  70.0-74.9
-  65.0-69.9
-  60.0-64.9





Natural Environment

-  Bromsgrove Country Parks
-  Ancient Woodland (2019) clipped
-  Local Wildlife Sites (2018) clipped
-  Local Geological Sites (2014) clipped
-  SSSI clipped to BDC plus 1km

SSSI IRZ Apr24 BDC+1km (For Resi)

-  Residential development of 100 units or more.
-  All planning applications (except householder)
-  ALL PLANNING APPLICATIONS
- EXCEPT HOUSEHOLDER APPLICATIONS.
-  ALL PLANNING APPLICATIONS

TPOs

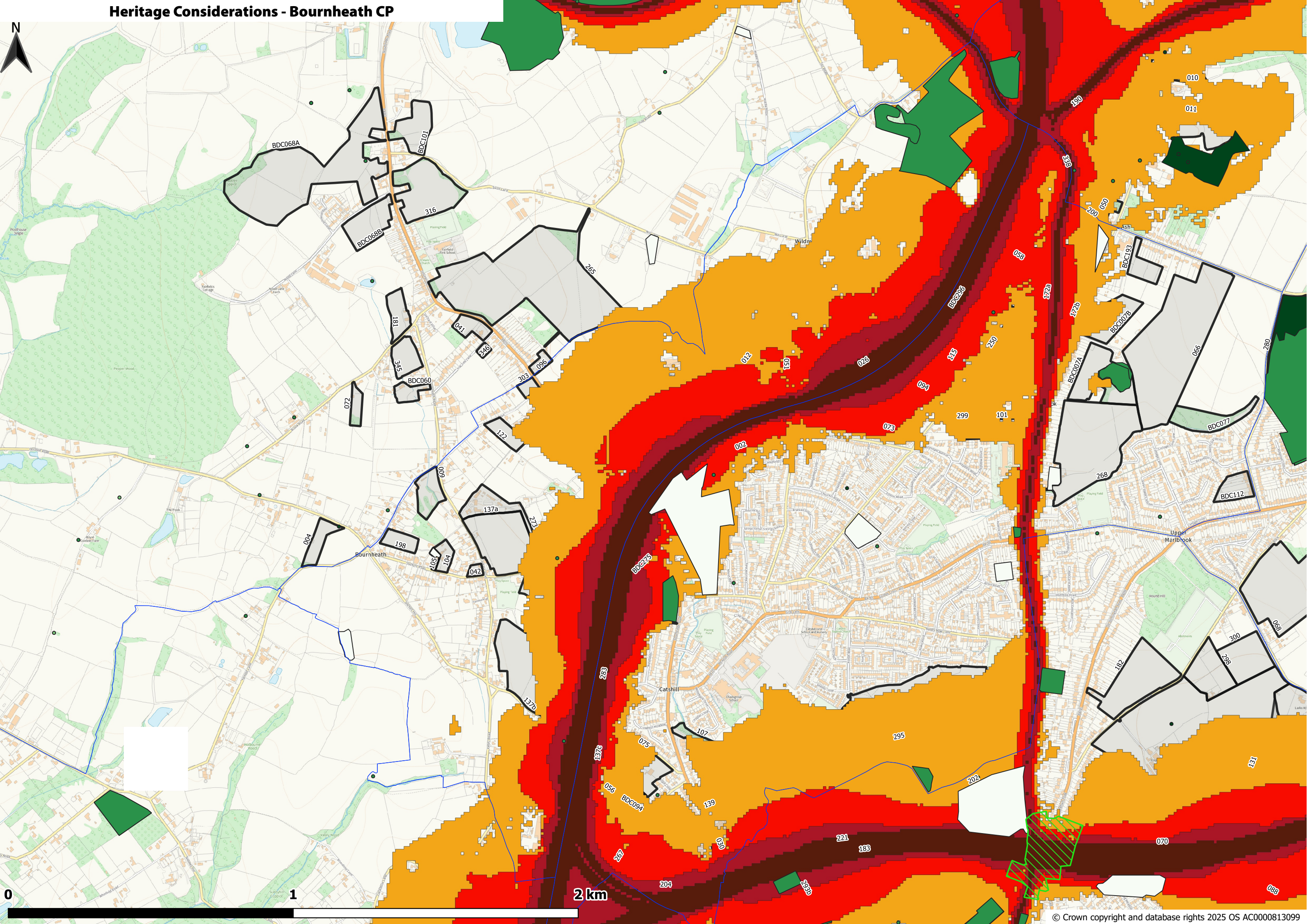
-  T
-  G
-  A
-  W

Flooding

-  Flood Zone 3 (FEB 24) BDC+1KM
-  Flood Zone 2 (FEB 24) BDC+1KM

Heritage Considerations - Bournheath CP

The map displays the Bournheath Civil Parish (CP) with various heritage considerations. A large white arrow points towards the center of the map. The map includes a north arrow and a scale bar (0 to 2 km). The map shows various place names and landmarks, including Bournheath, Catshill, and Upper Marlbrook. The map also shows various roads and boundaries. The map is color-coded to show different levels of heritage significance, with red indicating the highest level and green indicating the lowest level. The map also shows various numbers and codes, such as BDC068A, BDC101, BDC068B, BDC060, BDC078, BDC112, BDC077, BDC074, BDC193, BDC075, BDC094, BDC099, BDC098, BDC097, BDC096, BDC095, BDC094, BDC093, BDC092, BDC091, BDC090, BDC089, BDC088, BDC087, BDC086, BDC085, BDC084, BDC083, BDC082, BDC081, BDC080, BDC079, BDC078, BDC077, BDC076, BDC075, BDC074, BDC073, BDC072, BDC071, BDC070, BDC069, BDC068, BDC067, BDC066, BDC065, BDC064, BDC063, BDC062, BDC061, BDC060, BDC059, BDC058, BDC057, BDC056, BDC055, BDC054, BDC053, BDC052, BDC051, BDC050, BDC049, BDC048, BDC047, BDC046, BDC045, BDC044, BDC043, BDC042, BDC041, BDC040, BDC039, BDC038, BDC037, BDC036, BDC035, BDC034, BDC033, BDC032, BDC031, BDC030, BDC029, BDC028, BDC027, BDC026, BDC025, BDC024, BDC023, BDC022, BDC021, BDC020, BDC019, BDC018, BDC017, BDC016, BDC015, BDC014, BDC013, BDC012, BDC011, BDC010, BDC009, BDC008, BDC007, BDC006, BDC005, BDC004, BDC003, BDC002, BDC001.

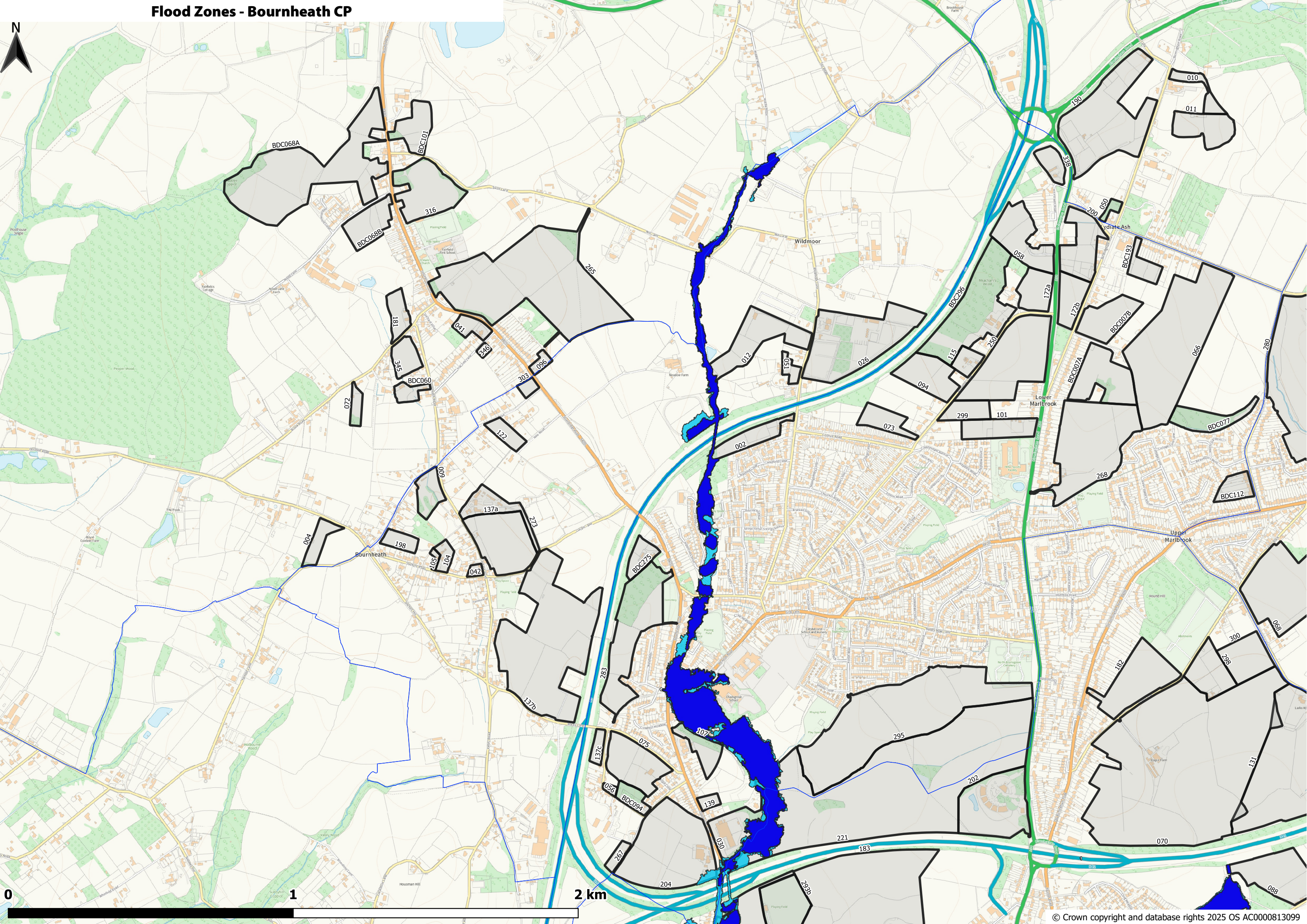
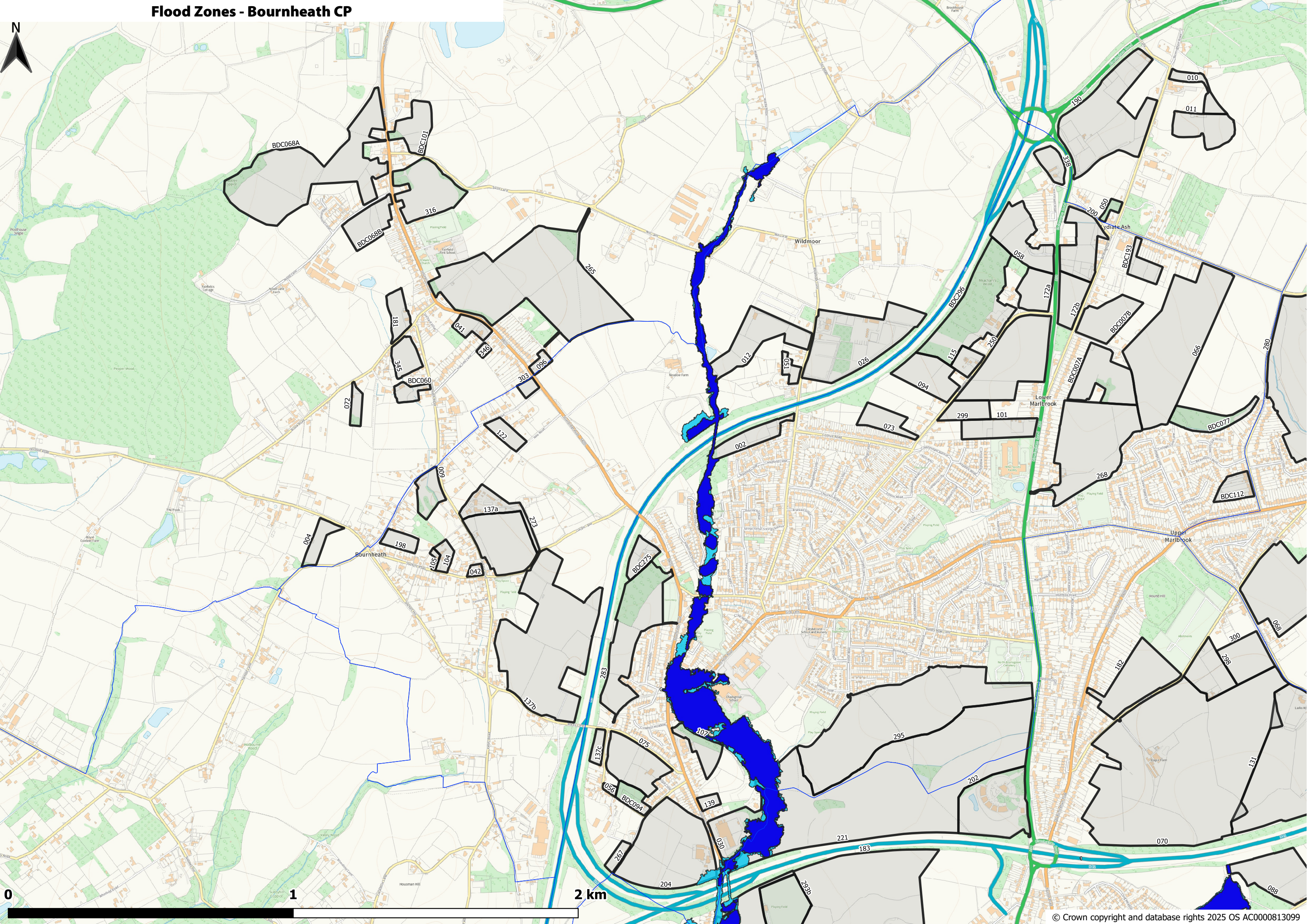


Heritage Considerations - Bournheath CP

This map displays the Bournheath Civil Parish (CP) with a color-coded overlay representing heritage considerations. The colors range from red (highest significance) to green (lowest significance). The map includes a north arrow in the top left corner and a scale bar at the bottom left, indicating distances up to 2 km. Various place names and landmarks are labeled, including Bournheath, Catshill, and Upper Marlbrook. The map also shows the locations of several Bournheath Development Corporation (BDC) areas, such as BDC068A, BDC101, BDC068B, BDC060, BDC078, BDC077, BDC112, BDC074, BDC193, BDC075, BDC094, BDC099, BDC098, BDC097, BDC096, BDC095, BDC094, BDC093, BDC092, BDC091, BDC090, BDC089, BDC088, BDC087, BDC086, BDC085, BDC084, BDC083, BDC082, BDC081, BDC080, BDC079, BDC078, BDC077, BDC076, BDC075, BDC074, BDC073, BDC072, BDC071, BDC070, BDC069, BDC068, BDC067, BDC066, BDC065, BDC064, BDC063, BDC062, BDC061, BDC060, BDC059, BDC058, BDC057, BDC056, BDC055, BDC054, BDC053, BDC052, BDC051, BDC050, BDC049, BDC048, BDC047, BDC046, BDC045, BDC044, BDC043, BDC042, BDC041, BDC040, BDC039, BDC038, BDC037, BDC036, BDC035, BDC034, BDC033, BDC032, BDC031, BDC030, BDC029, BDC028, BDC027, BDC026, BDC025, BDC024, BDC023, BDC022, BDC021, BDC020, BDC019, BDC018, BDC017, BDC016, BDC015, BDC014, BDC013, BDC012, BDC011, BDC010, BDC009, BDC008, BDC007, BDC006, BDC005, BDC004, BDC003, BDC002, BDC001.

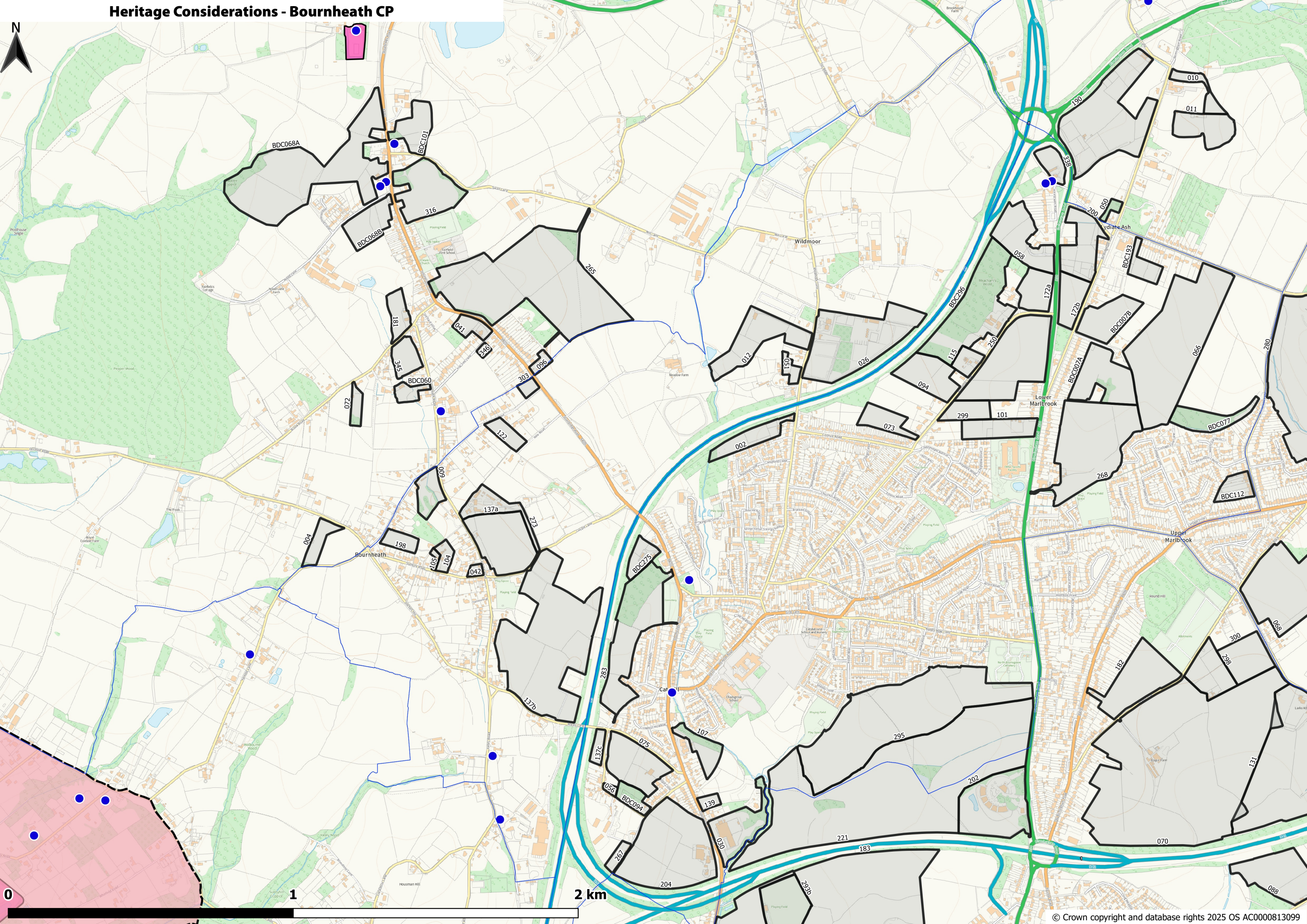
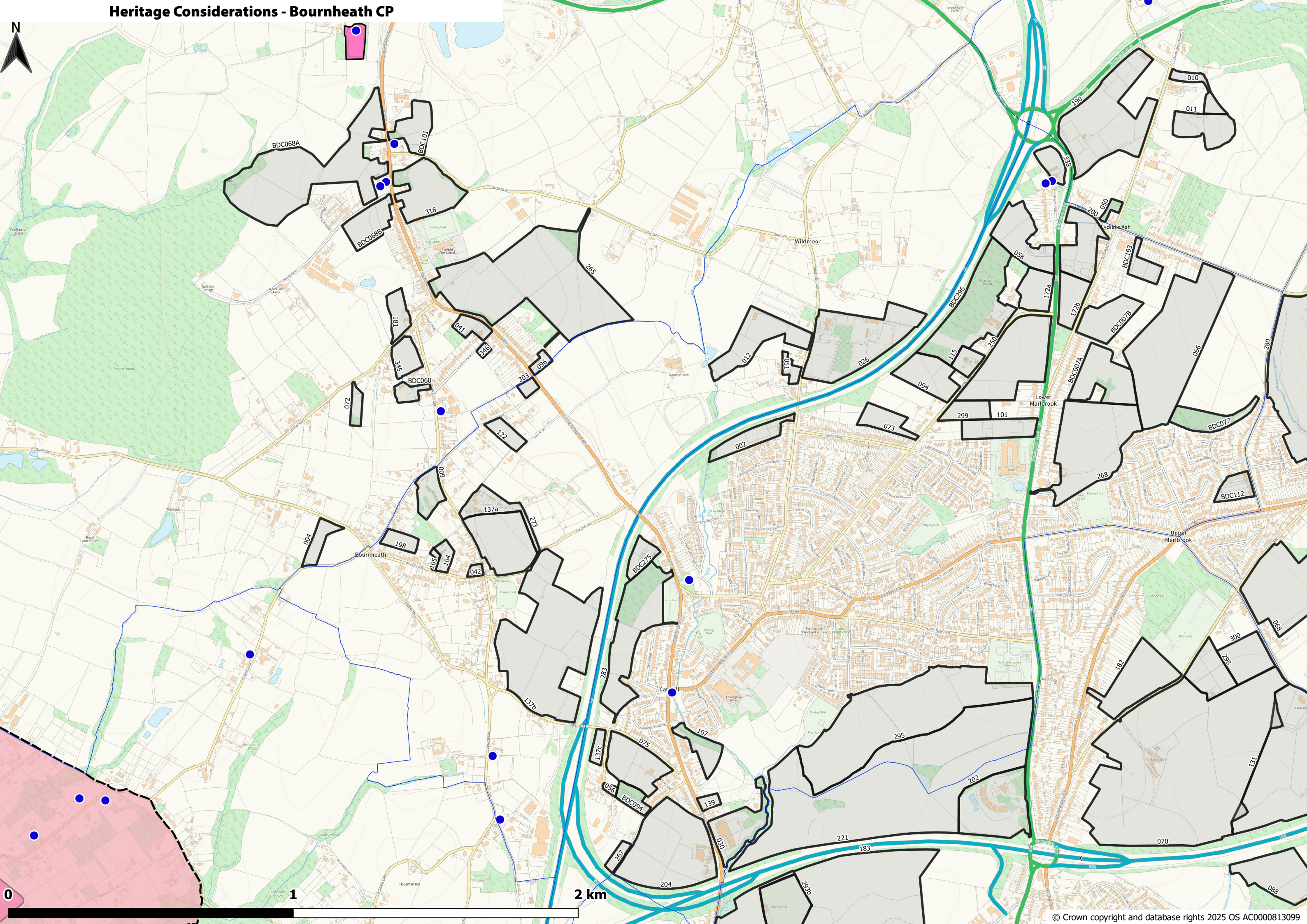
Heritage Considerations - Bournheath CP

This map displays the Bournheath Civil Parish (CP) with a color-coded overlay representing heritage considerations. The colors range from red (highest significance) to green (lowest significance). The map includes a north arrow in the top left corner and a scale bar at the bottom left, indicating distances up to 2 km. Various place names and landmarks are labeled, including Bournheath, Catshill, and Upper Marlbrook. The map also shows the locations of several Bournheath Development Corporation (BDC) areas, such as BDC068A, BDC101, BDC068B, BDC060, BDC078, BDC077, BDC112, BDC074, BDC193, BDC075, BDC094, BDC095, BDC096, BDC097, BDC098, BDC099, BDC100, BDC101, BDC102, BDC103, BDC104, BDC105, BDC106, BDC107, BDC108, BDC109, BDC110, BDC111, BDC112, BDC113, BDC114, BDC115, BDC116, BDC117, BDC118, BDC119, BDC120, BDC121, BDC122, BDC123, BDC124, BDC125, BDC126, BDC127, BDC128, BDC129, BDC130, BDC131, BDC132, BDC133, BDC134, BDC135, BDC136, BDC137, BDC138, BDC139, BDC140, BDC141, BDC142, BDC143, BDC144, BDC145, BDC146, BDC147, BDC148, BDC149, BDC150, BDC151, BDC152, BDC153, BDC154, BDC155, BDC156, BDC157, BDC158, BDC159, BDC160, BDC161, BDC162, BDC163, BDC164, BDC165, BDC166, BDC167, BDC168, BDC169, BDC170, BDC171, BDC172, BDC173, BDC174, BDC175, BDC176, BDC177, BDC178, BDC179, BDC180, BDC181, BDC182, BDC183, BDC184, BDC185, BDC186, BDC187, BDC188, BDC189, BDC190, BDC191, BDC192, BDC193, BDC194, BDC195, BDC196, BDC197, BDC198, BDC199, BDC200, BDC201, BDC202, BDC203, BDC204, BDC205, BDC206, BDC207, BDC208, BDC209, BDC210, BDC211, BDC212, BDC213, BDC214, BDC215, BDC216, BDC217, BDC218, BDC219, BDC220, BDC221, BDC222, BDC223, BDC224, BDC225, BDC226, BDC227, BDC228, BDC229, BDC230, BDC231, BDC232, BDC233, BDC234, BDC235, BDC236, BDC237, BDC238, BDC239, BDC240, BDC241, BDC242, BDC243, BDC244, BDC245, BDC246, BDC247, BDC248, BDC249, BDC250, BDC251, BDC252, BDC253, BDC254, BDC255, BDC256, BDC257, BDC258, BDC259, BDC260, BDC261, BDC262, BDC263, BDC264, BDC265, BDC266, BDC267, BDC268, BDC269, BDC270, BDC271, BDC272, BDC273, BDC274, BDC275, BDC276, BDC277, BDC278, BDC279, BDC280, BDC281, BDC282, BDC283, BDC284, BDC285, BDC286, BDC287, BDC288, BDC289, BDC290, BDC291, BDC292, BDC293, BDC294, BDC295, BDC296, BDC297, BDC298, BDC299, BDC300, BDC301, BDC302, BDC303, BDC304, BDC305, BDC306, BDC307, BDC308, BDC309, BDC310, BDC311, BDC312, BDC313, BDC314, BDC315, BDC316, BDC317, BDC318, BDC319, BDC320, BDC321, BDC322, BDC323, BDC324, BDC325, BDC326, BDC327, BDC328, BDC329, BDC330, BDC331, BDC332, BDC333, BDC334, BDC335, BDC336, BDC337, BDC338, BDC339, BDC340, BDC341, BDC342, BDC343, BDC344, BDC345, BDC346, BDC347, BDC348, BDC349, BDC350, BDC351, BDC352, BDC353, BDC354, BDC355, BDC356, BDC357, BDC358, BDC359, BDC360, BDC361, BDC362, BDC363, BDC364, BDC365, BDC366, BDC367, BDC368, BDC369, BDC370, BDC371, BDC372, BDC373, BDC374, BDC375, BDC376, BDC377, BDC378, BDC379, BDC380, BDC381, BDC382, BDC383, BDC384, BDC385, BDC386, BDC387, BDC388, BDC389, BDC390, BDC391, BDC392, BDC393, BDC394, BDC395, BDC396, BDC397, BDC398, BDC399, BDC400, BDC401, BDC402, BDC403, BDC404, BDC405, BDC406, BDC407, BDC408, BDC409, BDC410, BDC411, BDC412, BDC413, BDC414, BDC415, BDC416, BDC417, BDC418, BDC419, BDC420, BDC421, BDC422, BDC423, BDC424, BDC425, BDC426, BDC427, BDC428, BDC429, BDC430, BDC431, BDC432, BDC433, BDC434, BDC435, BDC436, BDC437, BDC438, BDC439, BDC440, BDC441, BDC442, BDC443, BDC444, BDC445, BDC446, BDC447, BDC448, BDC449, BDC450, BDC451, BDC452, BDC453, BDC454, BDC455, BDC456, BDC457, BDC458, BDC459, BDC460, BDC461, BDC462, BDC463, BDC464, BDC465, BDC466, BDC467, BDC468, BDC469, BDC470, BDC471, BDC472, BDC473, BDC474, BDC475, BDC476, BDC477, BDC478, BDC479, BDC480, BDC481, BDC482, BDC483, BDC484, BDC485, BDC486, BDC487, BDC488, BDC489, BDC490, BDC491, BDC492, BDC493, BDC494, BDC495, BDC496, BDC497, BDC498, BDC499, BDC500, BDC501, BDC502, BDC503, BDC504, BDC505, BDC506, BDC507, BDC508, BDC509, BDC510, BDC511, BDC512, BDC513, BDC514, BDC515, BDC516, BDC517, BDC518, BDC519, BDC520, BDC521, BDC522, BDC523, BDC524, BDC525, BDC526, BDC527, BDC528, BDC529, BDC530, BDC531, BDC532, BDC533, BDC534, BDC535, BDC536, BDC537, BDC538, BDC539, BDC540, BDC541, BDC542, BDC543, BDC544, BDC545, BDC546, BDC547, BDC548, BDC549, BDC550, BDC551, BDC552, BDC553, BDC554, BDC555, BDC556, BDC557, BDC558, BDC559, BDC560, BDC561, BDC562, BDC563, BDC564, BDC565, BDC566, BDC567, BDC568, BDC569, BDC570, BDC571, BDC572, BDC573, BDC574, BDC575, BDC576, BDC577, BDC578, BDC579, BDC580, BDC581, BDC582, BDC583, BDC584, BDC585, BDC586, BDC587, BDC588, BDC589, BDC590, BDC591, BDC592, BDC593, BDC594, BDC595, BDC596, BDC597, BDC598, BDC599, BDC600, BDC601, BDC602, BDC603, BDC604, BDC605, BDC606, BDC607, BDC608, BDC609, BDC610, BDC611, BDC612, BDC613, BDC614, BDC615, BDC616, BDC617, BDC618, BDC619, BDC620, BDC621, BDC622, BDC623, BDC624, BDC625, BDC626, BDC627, BDC628, BDC629, BDC630, BDC631, BDC632, BDC633, BDC634, BDC635, BDC636, BDC637, BDC638, BDC639, BDC640, BDC641, BDC642, BDC643, BDC644, BDC645, BDC646, BDC647, BDC648, BDC649, BDC650, BDC651, BDC652, BDC653, BDC654, BDC655, BDC656, BDC657, BDC658, BDC659, BDC660, BDC661, BDC662, BDC663, BDC664, BDC665, BDC666, BDC667, BDC668, BDC669, BDC670, BDC671, BDC672, BDC673, BDC674, BDC675, BDC676, BDC677, BDC678, BDC679, BDC680, BDC681, BDC682, BDC683, BDC684, BDC685, BDC686, BDC687, BDC688, BDC689, BDC690, BDC691, BDC692, BDC693, BDC694, BDC695, BDC696, BDC697, BDC698, BDC699, BDC700, BDC701, BDC702, BDC703, BDC704, BDC705, BDC706, BDC707, BDC708, BDC709, BDC710, BDC711, BDC712, BDC713, BDC714, BDC715, BDC716, BDC717, BDC718, BDC719, BDC720, BDC721, BDC722, BDC723, BDC724, BDC725, BDC726, BDC727, BDC728, BDC729, BDC730, BDC73



Heritage Considerations - Bournheath CP

The map illustrates the Bournheath Civil Parish (CP) and its surrounding areas, including Wildmoor, Lower Marlbrook, and Upper Marlbrook. The River Great Ouse is a prominent feature, flowing through the center of the parish. Various land parcels are outlined in black and labeled with numbers and codes, such as BDC068A, BDC101, BDC060, BDC075, BDC094, BDC077, BDC112, and BDC193. Blue dots indicate specific heritage sites or features. A scale bar at the bottom left shows distances up to 2 km. A north arrow is located in the top left corner. The map also shows surrounding areas like Wildmoor, Lower Marlbrook, and Upper Marlbrook.



Not Including Priority Habitat Designations - See separate habitats map

Not Including Priority Habitat Designations - See separate habitats map

