

## **Wythall Parish Neighbourhood Plan – Habitats, Nature Networks and Agricultural Land**

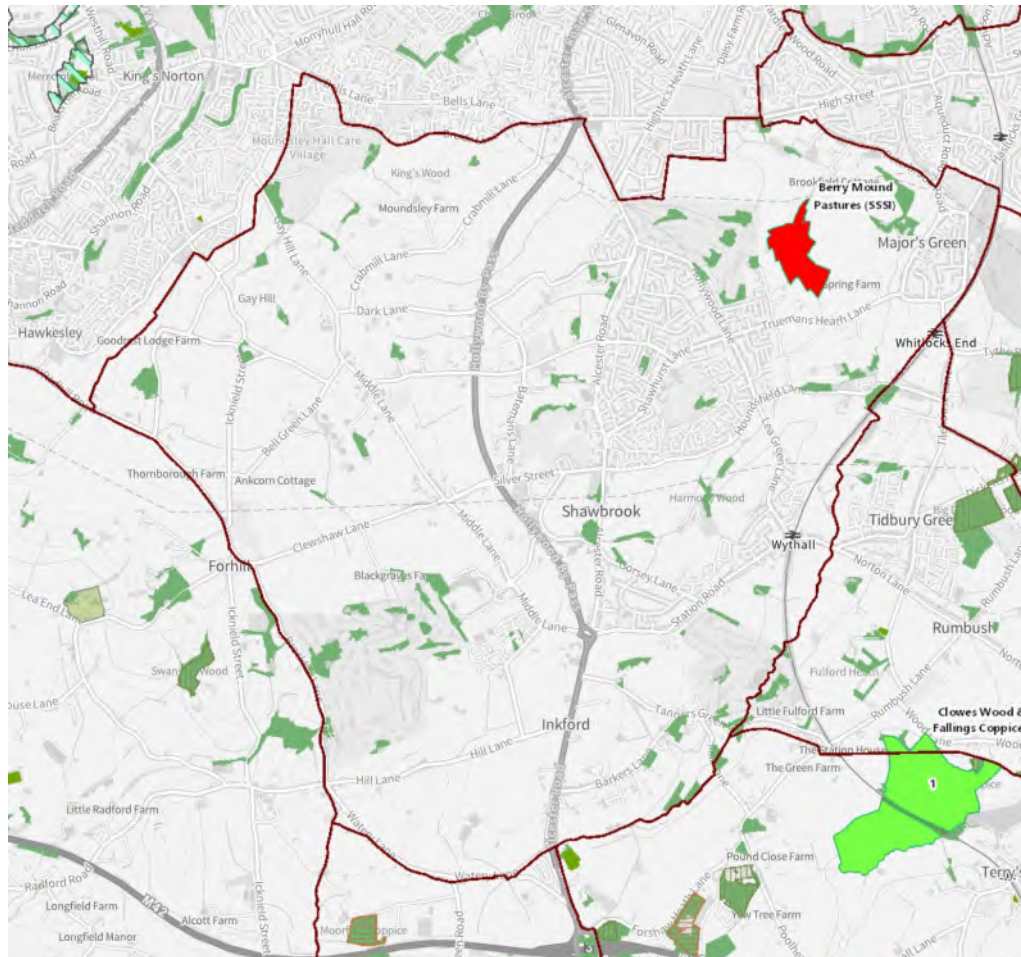
The following maps were generated mostly within the DEFRA Magic Map application. They were supplemented with other information where needed. The information contained in the first map has been included on all the others for reference.

An overall observation is that the parish contains relatively few national natural environment designations of value.

The main resources and opportunities appear to be located in the east and north east of the Parish connecting to nature networks to the north (in Birmingham) and to the east (in Dickens Heath and further afield).

Worcestershire County Council is working with partners on the preparation of a local nature recovery strategy (LNRS). The Worcestershire LNRS Issues and Options Consultation is due to launch on 15th January 2024 and will run for 6 weeks. This will seek views on the content of a Draft Local Habitat Map and on the direction of strategy.

## SSSI, Local Nature Reserves and Woodland



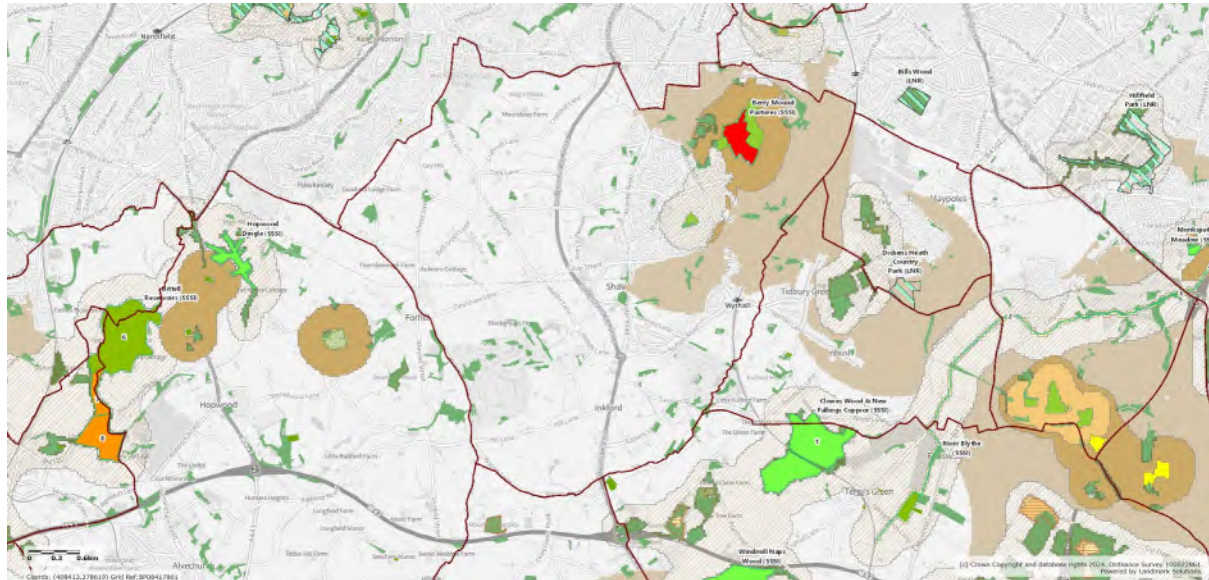
There is one SSSI located within Wythall Parish, at Berry Hill Mound Pastures. The SSSI condition has been assessed as declining over the last ten years or so, requiring more grazing with appropriate species to meet objectives.

There are no statutory Local Nature Reserves and there is no Ancient or Semi-Ancient Woodland located within the Parish.

Small patches of deciduous woodland are found throughout the parish.

There are no nature designations located on the boundaries of the parish in adjoining areas.

## National Habitat Network



### National Habitat Network All Habitats Combined (England)

- Ancient woodland
- Blanket bog
- Coastal saltmarsh
- Coastal sand dunes
- Coastal vegetated shingle
- Lakes
- Limestone pavement
- Lowland calcareous grassland
- Lowland dry acid grassland
- Lowland fens
- Lowland heathland
- Lowland meadows
- Lowland raised bog
- Maritime cliff & slope
- Purple moor grass & rush pastures
- Reedbeds
- Rivers
- Traditional orchard
- Upland calcareous grassland
- Upland flushes fens & swamps
- Upland hay meadow
- Upland heathland
- Wood pasture and parkland
- PHI\_Other
- Additional land within SSSIs
- Habitat Restoration-Creation
- Restorable Habitat
- Fragmentation Action Zone
- Network Enhancement Zone 1
- Network Enhancement Zone 2
- Network Expansion Zone

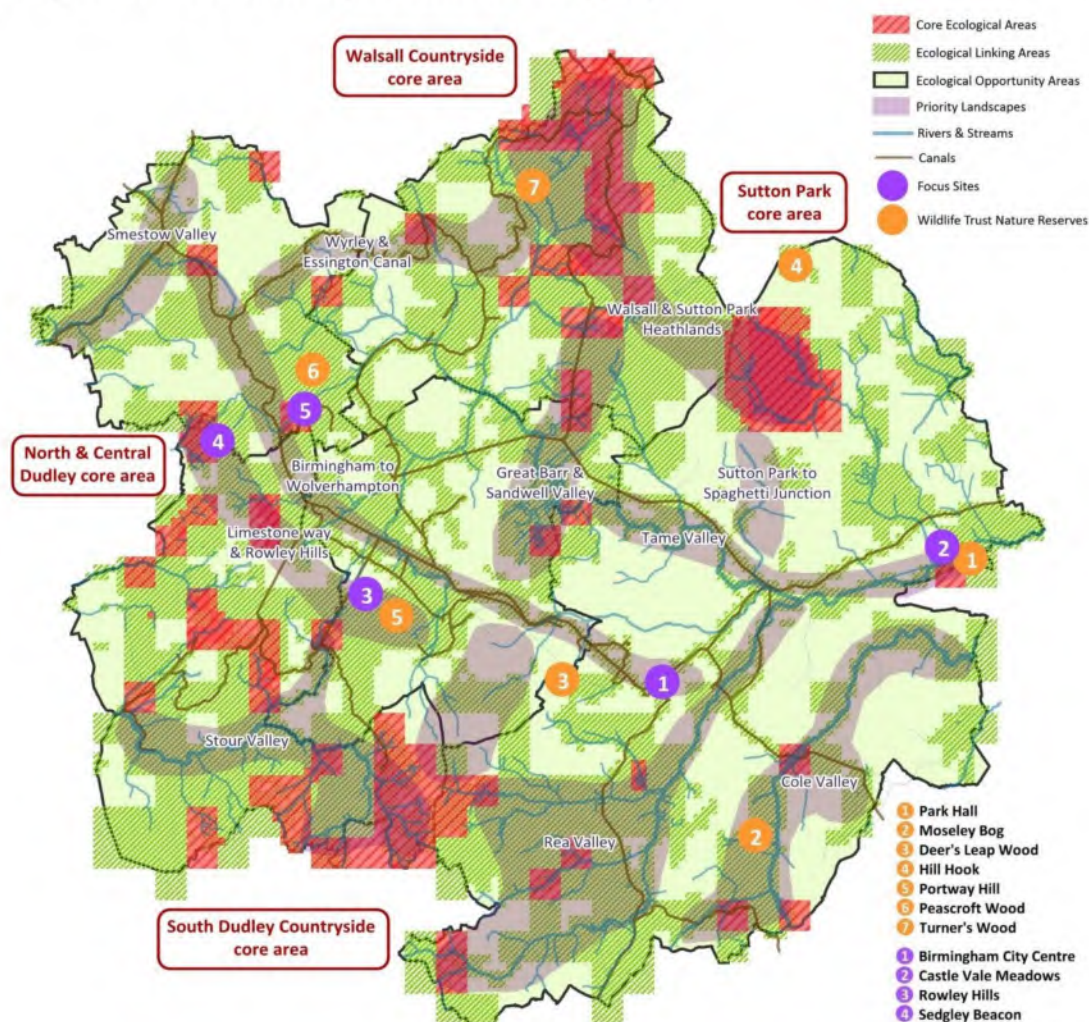
An Area in the north-east part of Wythall Parish is identified for habitat restoration, habitat network enhancement (including within built up areas) and habitat network expansion. This would link and expanded habitat network to a similarly enhanced and expanded area centred on Dickens Heath Country Park in the adjacent parish to the east. Areas immediately adjacent to this and also adjacent to Ancient Woodland within and beyond the Neighbourhood Area are viewed as potential areas for habitat network enhancement.

The bulk of the rest of the parish is not identified as having potential for habitat enhancement and expansion.



## Birmingham Nature Improvement Area

### Birmingham and the Black Country NIA ecological strategy map



Birmingham & Black Country Wildlife Trust  
 Centre of the Earth  
 42 Norman Street  
 Birmingham  
 B18 7EP  
[www.bbcwildlife.org.uk](http://www.bbcwildlife.org.uk)  
[info@bbcwildlife.org.uk](mailto:info@bbcwildlife.org.uk)  
 0121 523 0094

The northern edge of Wythall Parish adjoins the Birmingham and Black Country Nature Improvement Area. This was a government-funded partnership programme until 2015.

The partnership lives on and promotes programmes and projects to improve nature within the area.

Ecological linking areas are shown extending south from Moseley Bog, across the parish boundary in the north east corner.

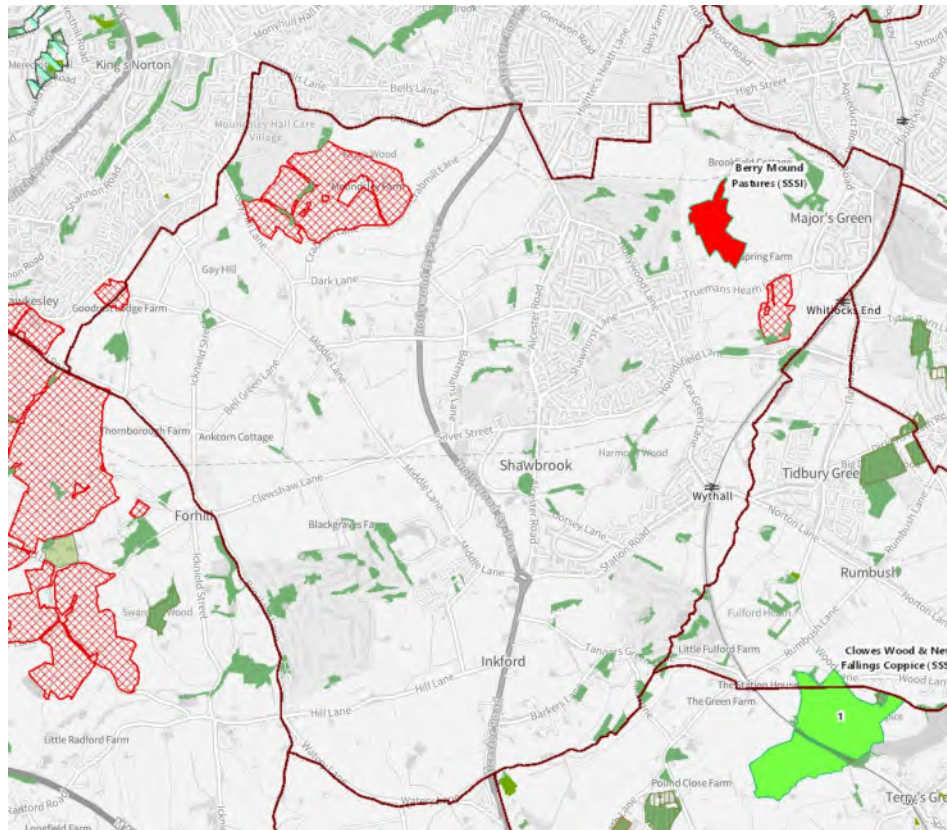


This map illustrates the distribution of green spaces in the Birmingham area. It highlights several National Parks (LNR) such as Halesowen, Bromsgrove, and Redditch. It also shows numerous Sites of Special Scientific Interest (SSSI) and other protected areas. The map is color-coded to show different types of habitats and land use. Key locations labeled include Edgbaston, Moseley, Selly Oak, and various parks and woodlands.

Core: 0  
Core: 1  
Core: 2  
Core: 3  
Core: 4  
Core: 5  
Core: 6  
Core: 7  
Core: 8  
Fringe: 0  
Fringe: 1  
Fringe: 2  
Fringe: 3  
Fringe: 4  
Fringe: 5  
Fringe: 6  
Fringe: 7  
Fringe: 8

5 | Page

## (Agricultural) Stewardship and Environmental Schemes



This shows previous stewardship and environmental improvement schemes operated by farmers (now being replaced by new schemes).

Two Countryside Stewardship Schemes covering approximately 60 hectares are shown within the parish.



## Living England Habitat Map



### Habitats and Species

#### Habitats

##### Living England Habitat Map

- Acid, Calcareous, Neutral Grassland
- Arable and Horticultural
- Bare Ground
- Bare Sand
- Bog
- Bracken
- Broadleaved, Mixed and Yew Woodland
- Built-up Areas and Gardens
- Coastal Saltmarsh
- Coastal Sand Dunes
- Coniferous Woodland
- Dwarf Shrub Heath
- Fen, Marsh and Swamp
- Improved Grassland
- Scrub
- Unclassified
- Water

#### Woodland

##### Ancient Woodland (England)

- Ancient and Semi-Natural Woodland
- Ancient Replanted Woodland

##### Priority Habitat Inventory - Deciduous Woodland (England)



##### Priority Habitat Inventory - Traditional Orchards (England)

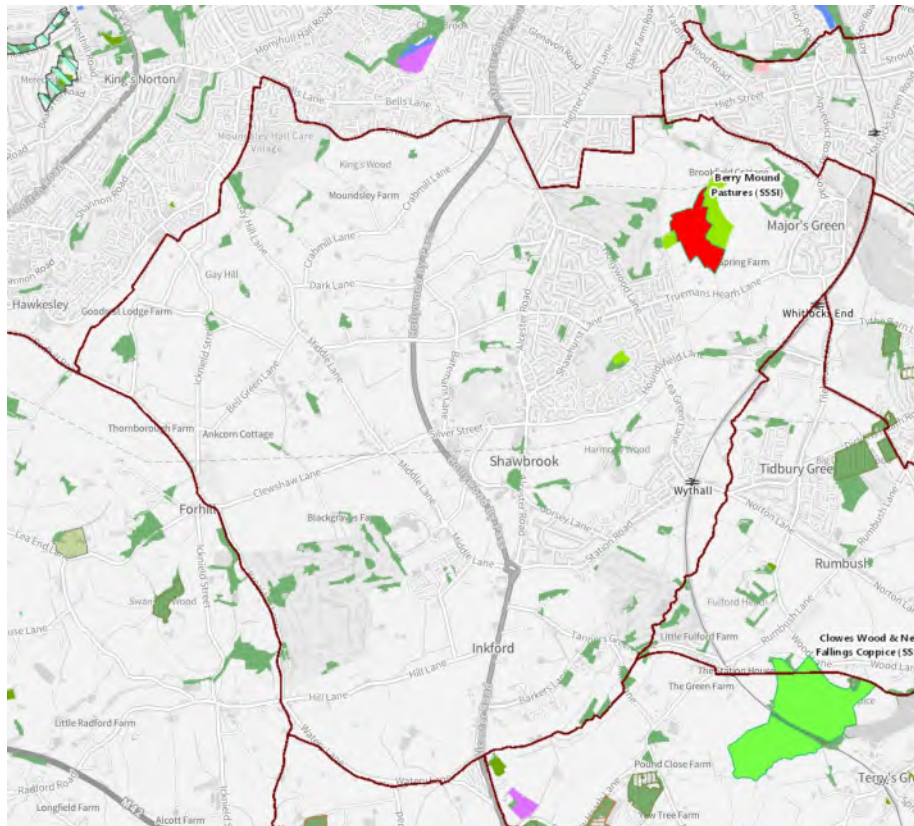


##### Woodpasture and Parkland BAP Priority Habitat (England)



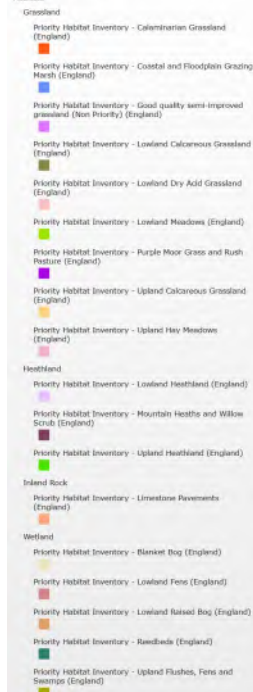
Refers to habitat types.

## Priority Habitats



### Habitats and Species

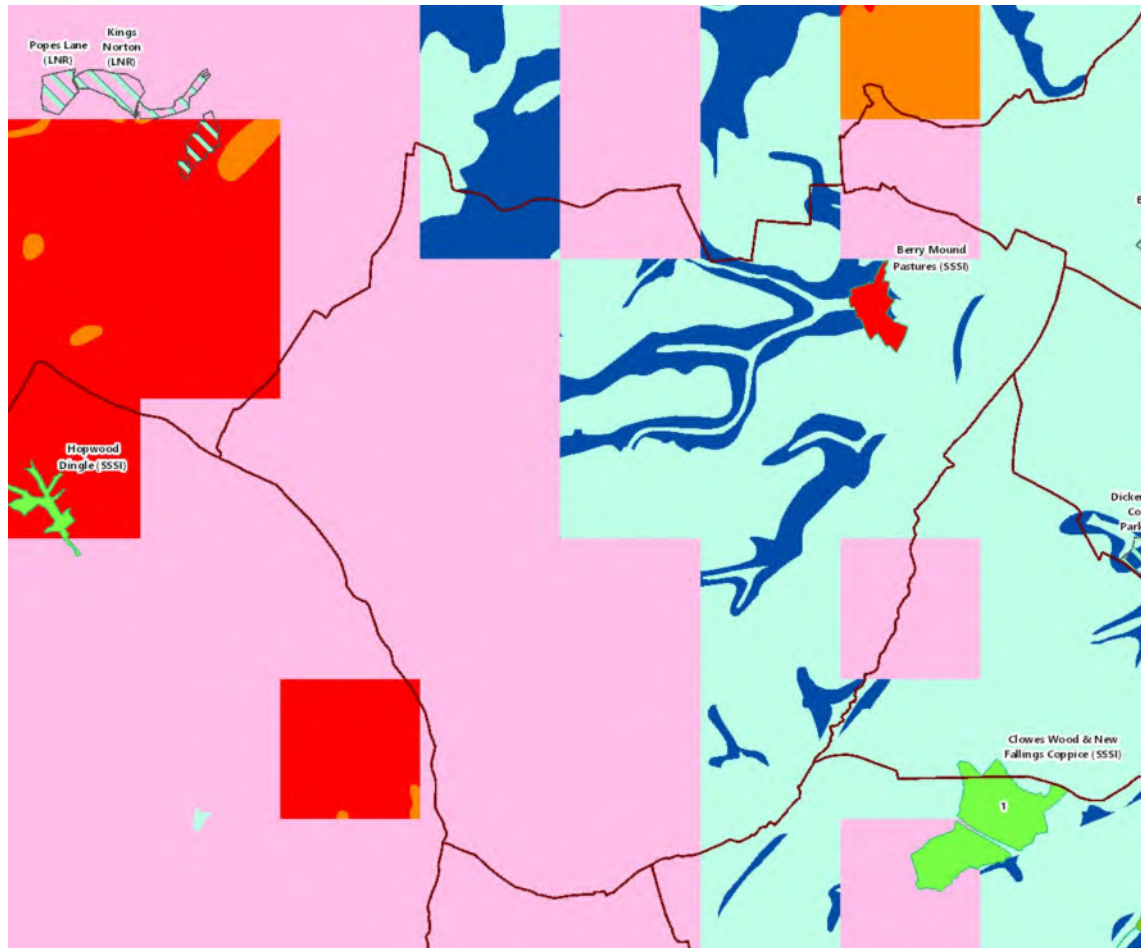
#### Habitats



Priority Habitats are lacking within the Parish except for two small areas of priority habitat in the form of lowland meadow, one of which is adjacent to the Berry Mound SSSI and a smaller area at the margins of Woodrush High School fields in Hollywood.








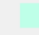


## Geology and Groundwater Vulnerability



### Landscape

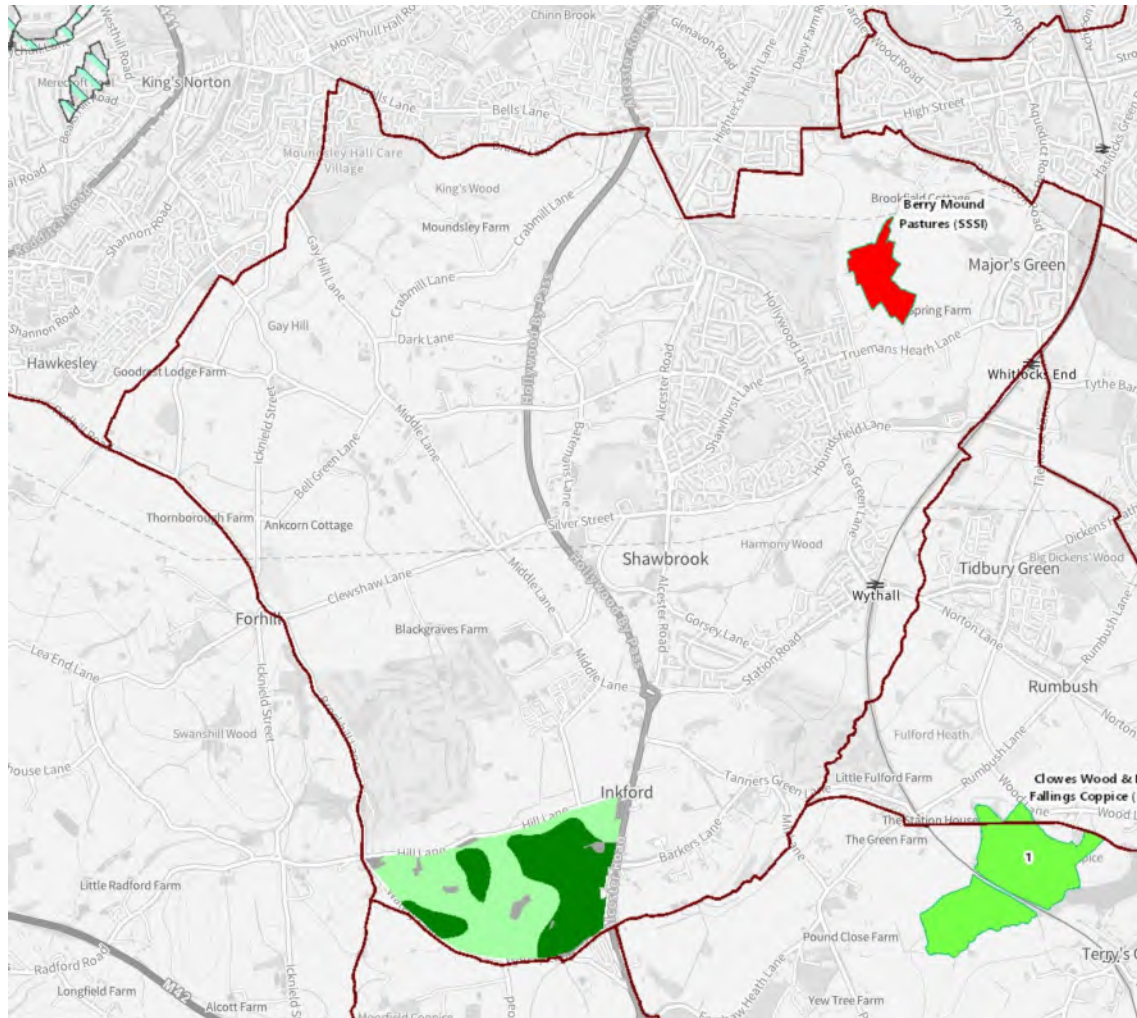
#### Geology and Soils

##### Groundwater Vulnerability Map (England)

-  Local Information
-  Soluble Rock Risk
-  High
-  Medium - High
-  Medium
-  Medium - Low
-  Low
-  Unproductive

The geology of the area indicates a low and medium-low groundwater vulnerability in the eastern part of Wythall Parish and a medium vulnerability in the western half of the parish. There is no soluble rock risk (that would result in sinkholes and collapse).

## Agricultural Land Classification #1



### Landscape Classifications

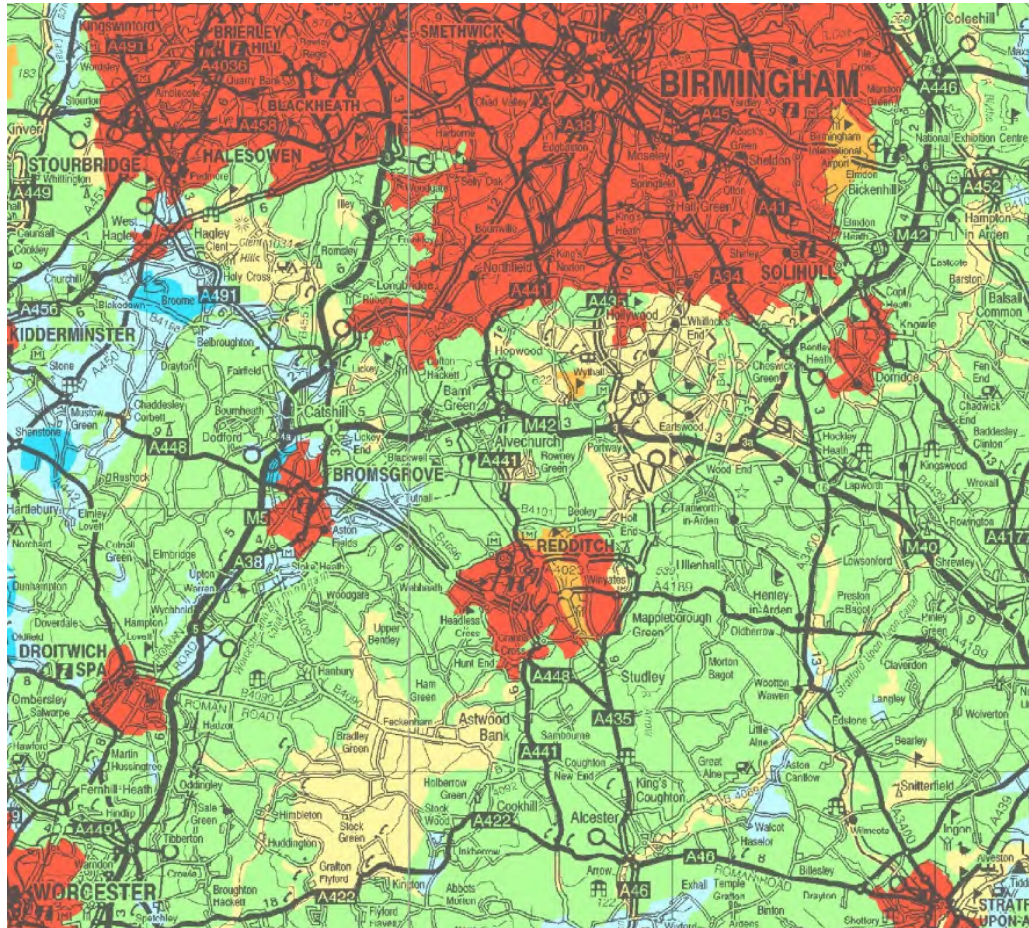
#### Post 1988 Agricultural Land Classification (England)

- **Grade 1**
- **Grade 2**
- **Grade 3a**
- **Grade 3b**
- **Grade 4**
- **Grade 5**
- **Not Surveyed**
- **Other**

Map showing lack of post 1988 ALC data for the parish. The small area surveyed post-1988 are shown as a mix of Grade 3a and 3b agricultural land.





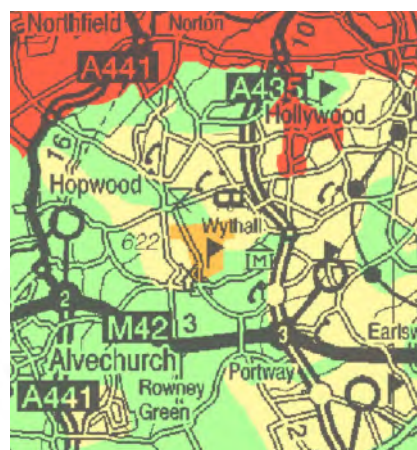
## Natural England Agricultural Land Classification Map #2



Grade	Description
1	Excellent
2	Very Good
3	Good to Moderate
4	Poor
5	Very Poor

### Non-Agricultural Land

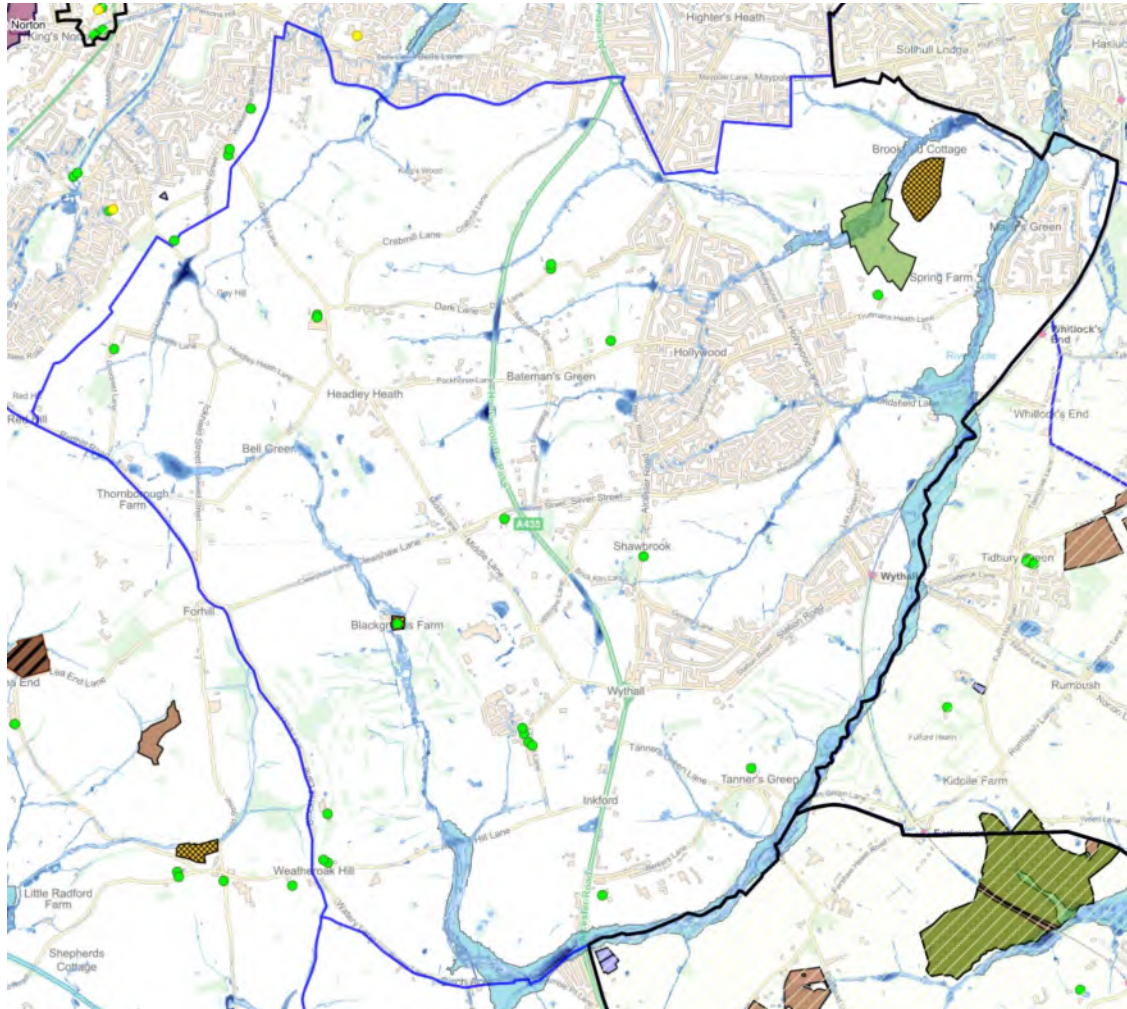
-  Other land primarily in non-agricultural use
-  Land predominantly in urban use



Broader map (not suitable for definition of ALC at site level) indicating the areas has extensive Grade 4 Poor agricultural land.



### Flood Risk, Heritage designations and SSSI combined

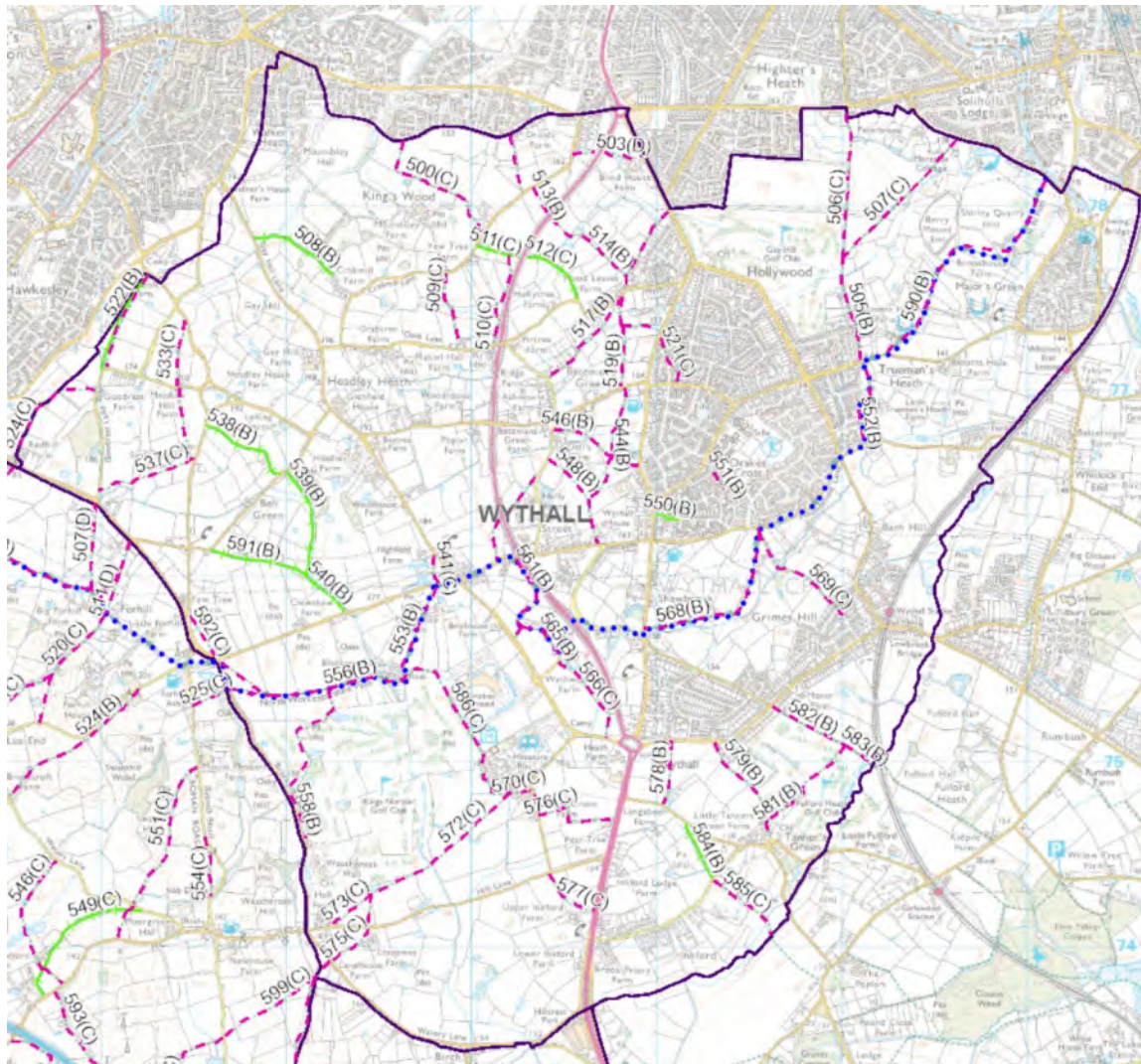


Map shows areas of Flood Risk from Rivers and the Sea (zones 2 and 3) and higher risk of flooding from surface waters. This is combined with heritage designations and SSSI.

This map, when considered with the maps above, indicates more sensitivity in the north east of the parish and a potential focus on habitat restoration and enhancement in this area.



## Definitive Map - Public Rights of Way



The definitive map of Public Rights of Way shows a relatively sparse network of footpaths in the parish (the blue path is part of a larger circular walk).

Given the lack of routes, identification of priorities for connecting walking routes should be identified.

It is also noteworthy that there is no PROW connections across the areas identified as potential nature enhancement and expansion zones eastwards to Dickens Heath.