







-  Bromsgrove Council Boundary
-  BDC Parishes
-  All Assessed Sites

## Considerations

### Historic Environment

- Listed Buildings (points) BDC 2024
-  Conservation Areas 2019
-  Neighbouring CAs
-  Bromsgrove Scheduled Monuments Oct 2019
-  SchedMon within 1km of BDC 2023






### Bromsgrove Registered Parks and Gardens

-  Grade I RPG
-  Grade II\* RPG





### Air Quality, Contamination & Noise

-  AQMA 2019 clipped to BDC plus 1km






### Potentially Contaminated Land [8613]

-  0 - 30 [6791]
-  30 - 180 [381]
-  180 - 280 [591]
-  280 - 410 [695]
-  410 - 1040 [155]


### 2020 Road Noise LAeq16h England Round 3

-  >=75.0
-  70.0-74.9
-  65.0-69.9
-  60.0-64.9

### Natural Environment

-  Bromsgrove Country Parks
-  Ancient Woodland (2019) clipped
-  Local Wildlife Sites (2018) clipped
-  Local Geological Sites (2014) clipped
-  SSSI clipped to BDC plus 1km

### SSSI IRZ Apr24 BDC+1km (For Resi)

-  Residential development of 100 units or more.
-  All planning applications (except householder)
-  ALL PLANNING APPLICATIONS  
- EXCEPT HOUSEHOLDER APPLICATIONS.
-  ALL PLANNING APPLICATIONS

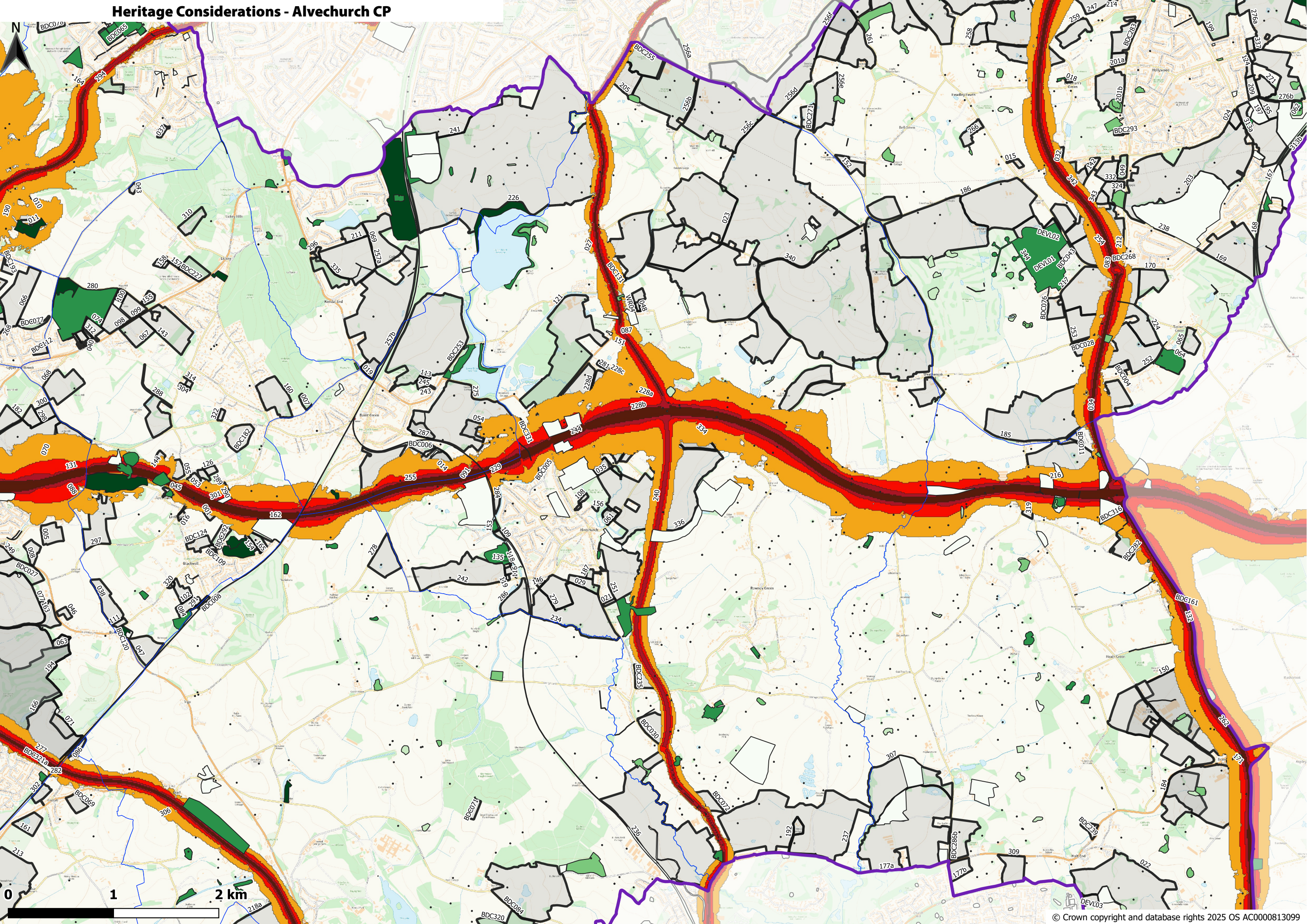
### TPOs

-  T
-  G
-  A
-  W

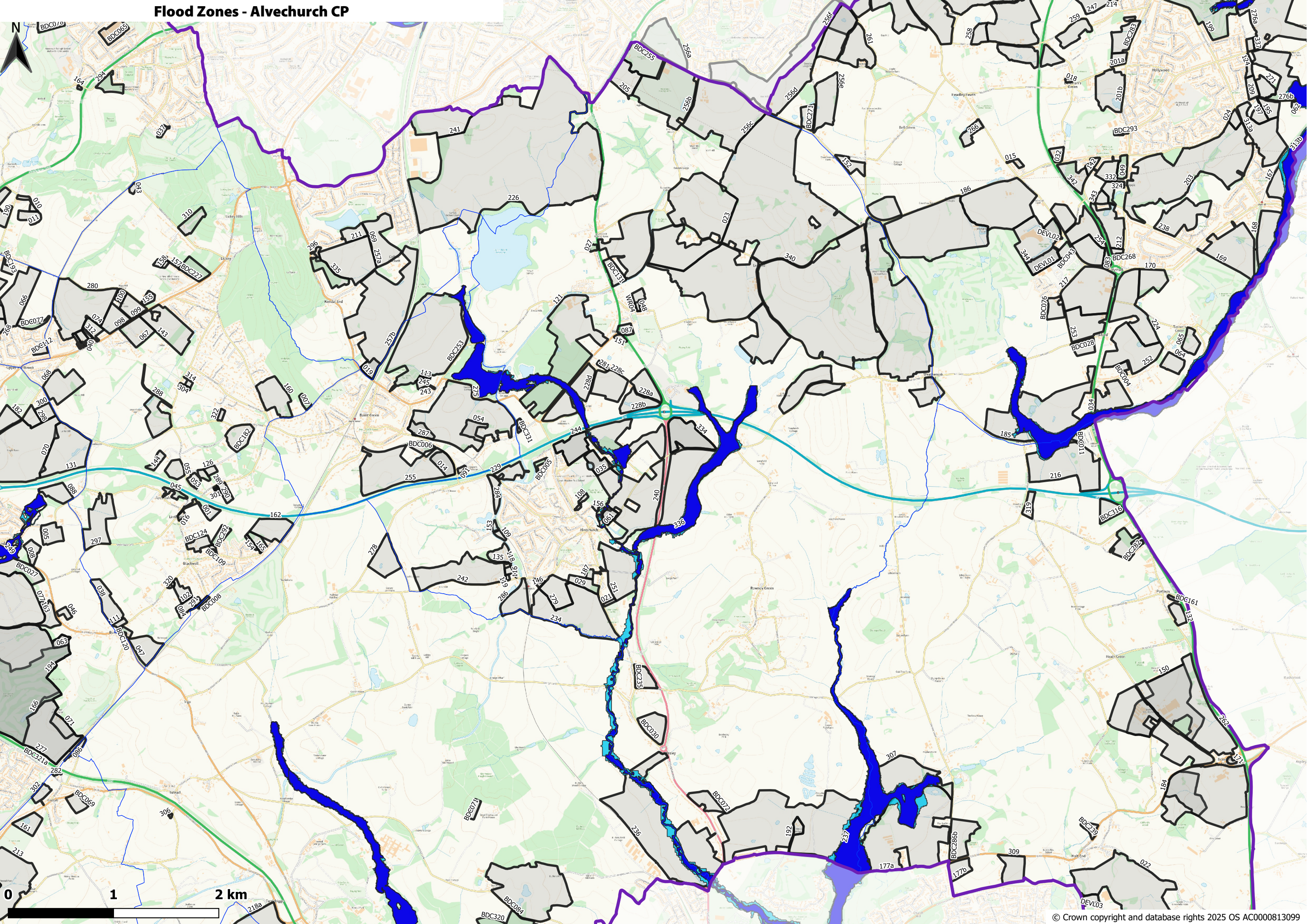
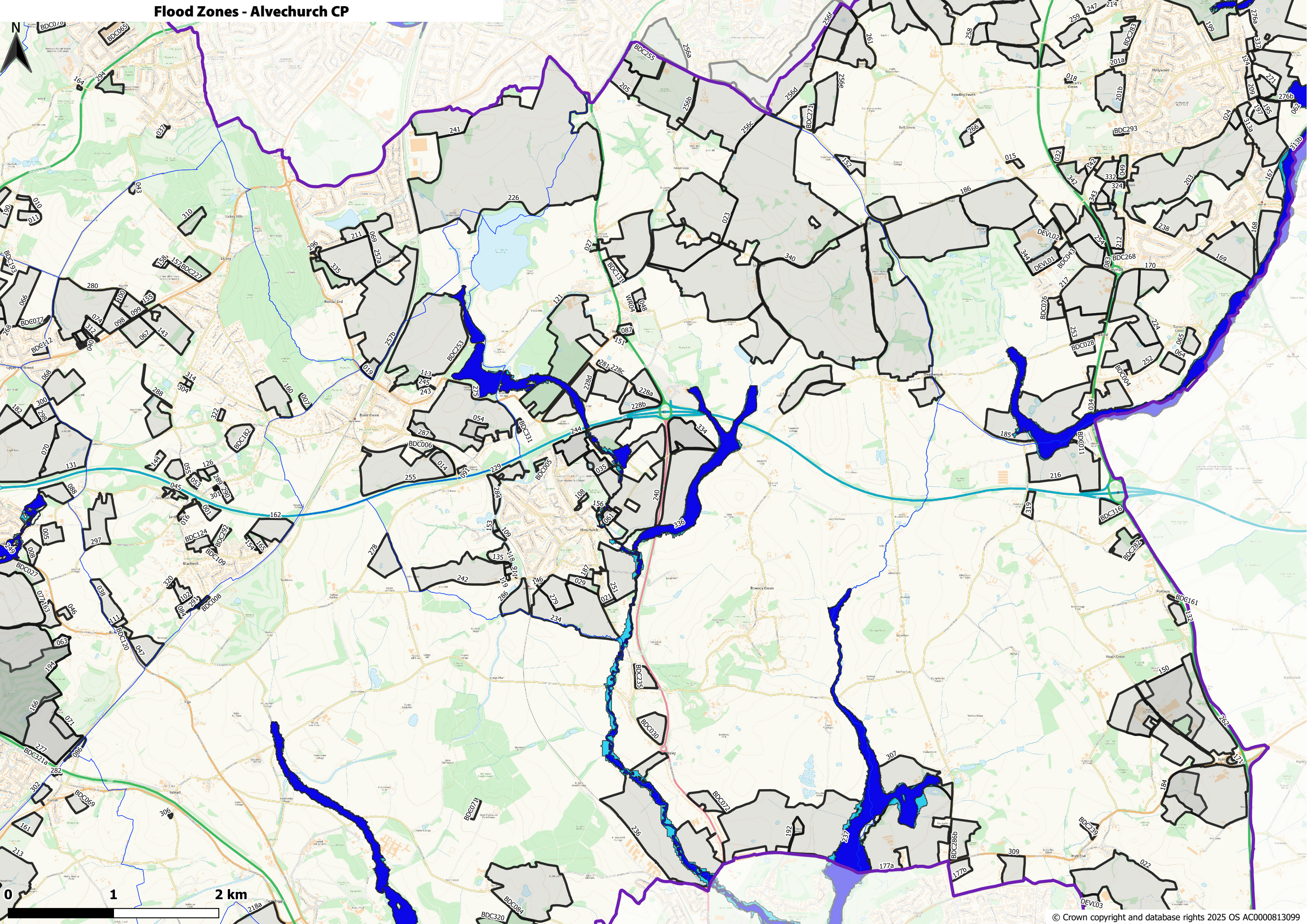
### Flooding

-  Flood Zone 3 (FEB 24) BDC+1KM
-  Flood Zone 2 (FEB 24) BDC+1KM









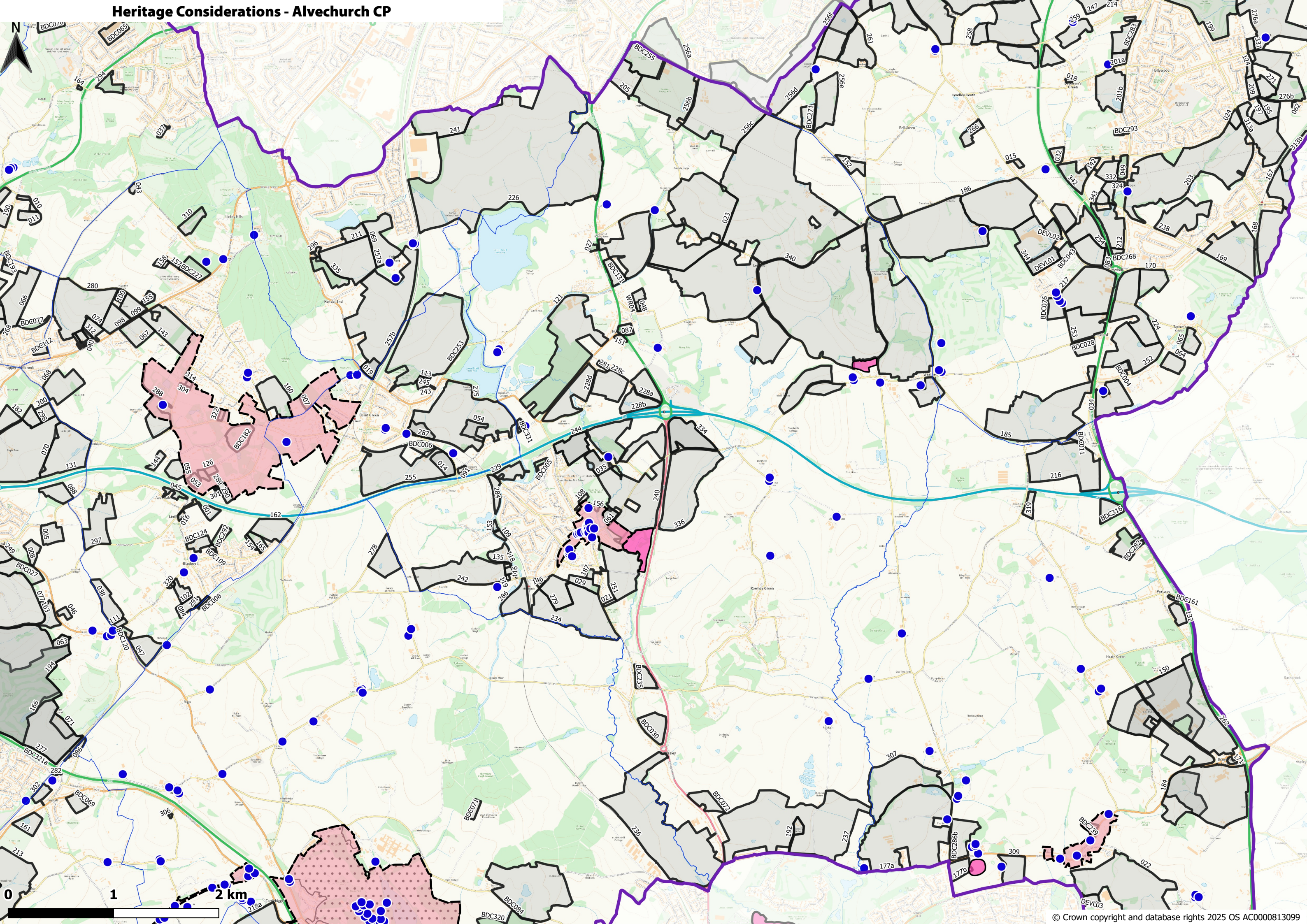


**Heritage Considerations - Alvechurch CP**

This map illustrates the heritage considerations for the Alvechurch Civil Parish (CP). It shows the geographical layout of the area, including roads, paths, and land parcels. Key features include:

- Land Parcels:** Numerous parcels are outlined in black, with some shaded in grey. A large central area is shaded in pink, and several smaller areas are also highlighted in pink.
- Roads and Paths:** A network of roads and paths is shown, with some roads highlighted in green and others in blue.
- Green Spaces and Water Bodies:** Green areas represent open spaces or parks, while blue areas represent water bodies.
- Scale and Orientation:** A scale bar at the bottom left indicates distances up to 2 km. A north arrow is located in the top left corner.
- Heritage Considerations:** The map is titled 'Heritage Considerations - Alvechurch CP', suggesting it is used for planning and development purposes related to heritage.

© Crown copyright and database rights 2025 OS AC0000813099





**Natural Environment Considerations - Alvechurch CP**  
**Not Including Priority Habitat Designations - See separate habitats map**

