



Bromsgrove District Plan

Changes from Adopted Proposals Map to
New Policies Map Arising from the Bromsgrove District Plan

February 2014

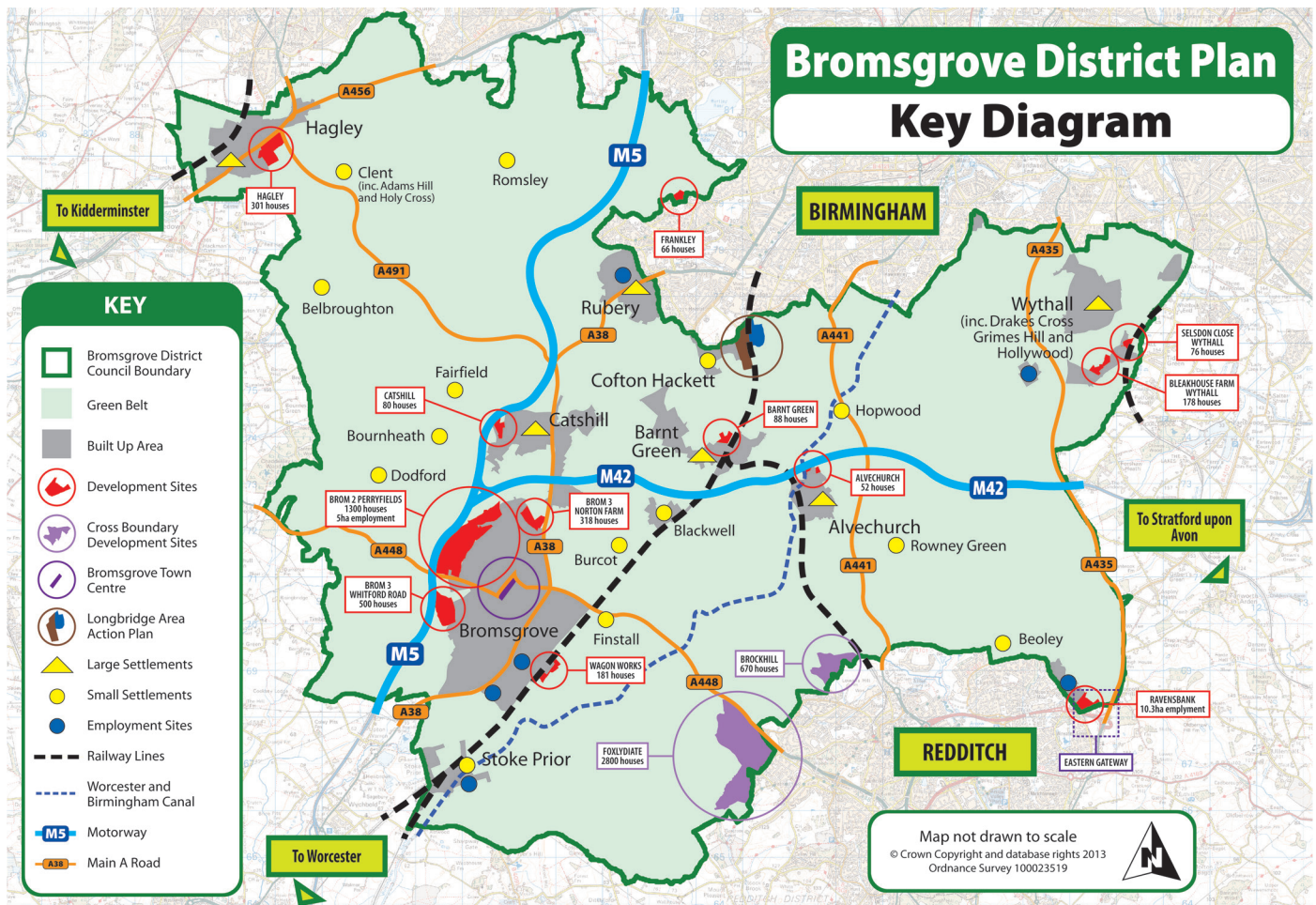


Contents

1. Introduction	2
2. Amendments to Adopted Proposal Map (affecting the Policies Map)	3
3. Additions to Policies map	8
4. Deletions to Adopted Proposal Map (Affecting the Policies map)	9
5. No Changes to Adopted Proposals Map (Affecting the Policies Map)	12

Appendices

Appendix One: List of Maps	14
Appendix Two: Inset Maps	15



© Crown Copyright and database rights 2014. Ordnance Survey 100023519.

1 Introduction

1.1 What is the Adopted Policies Map?

1.2 Covering the whole District, the Adopted Policies Map (formerly the Proposals Map DPD) will show geographically all land use policies set out in adopted Development Plan Documents, such as the Bromsgrove District Plan (BDP) and Longbridge Area Action Plan (AAP).

In this regard it will:

- identify areas of protection, such as Green Belt and Conservation Areas, defined through the strategic planning process;
- allocate sites for particular land use and development proposals included in any adopted development plan document, and set out the areas to which specific policies apply.

1.3 What is the purpose of this document?

1.4 In line with the Town and Country Planning (Local Planning) (England) Regulations 2012, a policies map must be submitted if the adoption of a Local Plan would result in changes to the adopted Policies Map. Whilst the Policies Map is a separate Development Plan Document (DPD) in its own right, it essentially expresses geographically the most up to date adopted development plan policies of the Council. The Policies Map contains a large scale map sheet (A0 in size), which is supplemented by a separate booklet, comprising schedules of all sites and designations, as well as any accompanying map sheets.

1.5 The policies and proposals included in the proposed submission Bromsgrove District Plan (BDP) have resulted in the need to make changes to the original Proposals Map, which was adopted along with the Bromsgrove District Local Plan in 2004. The Council has prepared various schedules and accompanying maps to illustrate the changes that are proposed to the adopted Proposals Map as a result of the Bromsgrove District Plan policies and proposals. The reasons for these changes are identified in the schedules together with a map reference which indicates the appropriate inset map where the proposed change is shown.

1.6 The proposed changes to the Policies map consist of amendments to the adopted Proposal map, additions to the map, as well as a number of deletions to the map. The schedule also identifies where no changes have been made to the map and where these designations will remain the same, albeit reflected under a new policy within the BDP.

1.7 This document therefore forms part of the Proposed Submission Documents produced alongside the Publication document of the Bromsgrove District Plan. It identifies allocations made in the BDP, deletes allocations/designations where policies are deleted and also updates/amends existing allocations where they are linked to proposed policies in the BDP.

1.8 It must be noted that any changes to the Policies Map would not be official until the adoption of the District Plan. Detailed plans of these proposed changes can be provided on request. A list of the superseded policies can be found within the appendices of the Proposed Submission version of the BDP.

2. Amendments to the Adopted Proposal Map (affecting the Policies Map)

2.1 The schedule below (Table 1) sets out the amendments from the Adopted Proposals Map. The Schedule sets out which inset map corresponds to the amendment, the relevant Local Plan and Bromsgrove District Plan Policy (where applicable), the change that is occurring from the adopted Proposals Map, a brief explanation to the change, and the location to where the change is relevant.

Table 1. Amendments to the Adopted Proposal Map

Map Ref.	Local Plan Policy	Relevant BDP Policy	Change	Explanation	Location (Parish/Ward)
PM1	ALVE6	BDP5B	Change from Area of Development Restraint to a residential Development Site	To show the area which the policy applies	Alvechurch
PM1	ALVE7	BDP5B	Change from Area of Development Restraint to a residential Development Site	To show the area which the policy applies	Alvechurch
PM1	ALVE8	N/A	Change from Area of Development Restraint to residential	Alvechurch First and Middle School has been built in this location and therefore there are no longer any policy designations	Alvechurch
PM2	BG1	BDP18	The blue 'shopping' area identified on the Policies Map has been extended	To show the area which the policy applies	Barnt Green
PM2	Unzoned Area	BDP5B	* Change from an unzoned area to a residential Development Site and Green Belt (where applicable)	To show the area which the policy applies	Barnt Green
PM3	BE3	BDP5B	Change from Area of Development Restraint to an employment Development Site	To show the area which the policy applies	Beoley

* It must be noted that the unzoned area was originally mapped incorrectly within the Proposals Map and the updated Policies Map reflects the correct designations.

Table 1. Amendments to the Adopted Proposal Map *continued*

Map Ref.	Local Plan Policy	Relevant BDP Policy	Change	Explanation	Location (Parish/Ward)
PM4	BROM5	BDP5A - BROM1	Change from Area of Development Restraint to a residential Development Site	To show the area which the policy applies	Bromsgrove (Norton)
PM4	BROM5A	BDP5A-BROM2	Change from Area of Development Restraint to a residential Development Site	To show the area which the policy applies	Bromsgrove (Sidemoor)
PM4	Part of BROMA	BDP25	A small section of this area is now covered by an 'open space' designation as part of BDP25	To show the area which the policy applies	Bromsgrove (Sidemoor)
PM4	BROM5B	BDP5A-BROM2	Change from Area of Development Restraint to a residential Development Site	To show the area which the policy applies	Bromsgrove (Sidemoor)
PM5	BROM5C	BDP5B	Change from Area of Development Restraint to a residential Development Site	To show the area which the policy applies	Finstall
PM4	BROM5D	BDP5A-BROM2	Change from Area of Development Restraint to a residential Development Site	To show the area which the policy applies	Bromsgrove (Sidemoor)
PM6	BROM5E	BDP5B	Change from Area of Development Restraint to a residential Development Site (Boundary also amended to reflect approved planning application)	To show the area which the policy applies	Catshill
PM4	BROM5F	BDP5A-BROM3	Change from Area of Development Restraint to a residential Development Site	To show the area which the policy applies	Bromsgrove (Whitford)

Table 1. Amendments to the Adopted Proposal Map *continued*

Map Ref.	Local Plan Policy	Relevant BDP Policy	Change	Explanation	Location (Parish/Ward)
PM7	BROM12	BDP17	Primary Shopping Area has been extended	To show the extended Primary Shopping Area to which the policy applies	Bromsgrove (St. Johns)
PM7	BROM17	BDP17-TC1	Policy has been deleted and replaced by a Development Site within BDP17	To show the area which the policy applies	Bromsgrove (St. Johns)
PM4	BROM28 (b)	BDP25	Policy has been deleted and is now covered by an 'open space' designation as part of BDP25	To show the area which the policy applies	Bromsgrove (Norton)
PM4	BROM28 (c)	BDP25	Policy has been deleted and is now covered by an 'open space' designation as part of BDP25	To show the area which the policy applies	Bromsgrove (Whitford)
PM4	BROM28 (d)	BDP25	Policy has been deleted and is now covered by an 'open space' designation as part of BDP25	To show the area which the policy applies	Bromsgrove (Whitford)
PM4	BROM28 (e)	BDP25	Policy has been deleted and is now covered by an 'open space' designation as part of BDP25	To show the area which the policy applies	Bromsgrove (Charford)
PM8	BROM28 (f)	BDP25	Policy has been deleted and is now covered by an 'open space' designation as part of BDP25	To show the area which the policy applies	Bromsgrove (Charford)
PM8	BROM28 (g)	BDP25	Policy has been deleted and is now covered by an 'open space' designation as part of BDP25	To show the area which the policy applies	Bromsgrove (Stoke Heath)
PM6	BROM28 (i)	BDP4 plus partly BDP5B	* Policy has been deleted and area is now covered by Green Belt, although a small proportion also forms part of a residential Development Site	To show the area which the policies apply	Catshill

* Due to accessibility and ownership issues this area of land is no longer designated as a play area or open space; and has been reverted to Green Belt which is viewed as more appropriate.

Bromsgrove District Plan Policies Map

Amendments to the Adopted Proposal Map

Table 1. Amendments to the Adopted Proposal Map *continued*

Map Ref.	Local Plan Policy	Relevant BDP Policy	Change	Explanation	Location (Parish/Ward)
PM4	BROM28 (I)	BDP25	Policy has been deleted and is now covered by an 'open space' designation as part of BDP25	To show the area which the policy applies	Bromsgrove (St. Johns)
PM4	BROM29	N/A	Policy not replaced - now residential land	Meadows First School has been built in this location and therefore there are no longer any policy designations	Bromsgrove (Sidemoor)
PM4	BROM32	Both BDP25 and BDP5A - BROM2	* Policy has been deleted; however, the southern section is now covered by an 'open space' designation as part of BDP25. The northern section now forms part of a residential Development Site	To show the area which the policies apply	Bromsgrove (Whitford and Sidemoor)
PM9	FR4	BDP5B	Change from Area of Development Restraint to a residential Development Site	To show the area which the policy applies	Frankley
PM10	HAG2	BDP5B	Change from Area of Development Restraint to a residential Development Site	To show the area which the policy applies	Hagley
PM10	HAG2A	BDP5B	Change from Area of Development Restraint to a residential Development Site	To show the area which the policy applies	Clent
PM10	HAG2B	BDP5B	Change from Area of Development Restraint to a residential Development Site	To show the area which the policy applies	Hagley
PM10	HAG3	BDP18	The blue 'shopping' area identified on the Policies Map has been extended	To show the area which the policy applies	Hagley

* The southern section remains as open space due to its strategic links with Sanders Park and its wider green infrastructure credentials.

Table 1. Amendments to the Adopted Proposal Map *continued*

Map Ref.	Local Plan Policy	Relevant BDP Policy	Change	Explanation	Location (Parish/Ward)
PM11	RUB2	BDP18	The blue 'shopping' area identified on the Policies Map has been extended	To show the area which the policy applies	Rubery
PM12	WYT2	BDP25	Policy has been deleted and is now covered by an 'open space' designation as part of BDP25	To show the area which the policy applies	Wythall
PM12	WYT3	BDP25	Policy has been deleted and is now covered by an 'open space' designation as part of BDP25	To show the area which the policy applies	Wythall
PM12	WYT9	BDP25	Policy has been deleted and is now covered by an 'open space' designation as part of BDP25	To show the area which the policy applies	Wythall
PM13	WYT15	BDP5B	Change from Area of Development Restraint to a residential Development Site	To show the area which the policy applies	Wythall
PM13	WYT16	BDP5B	Change from Area of Development Restraint to a residential Development Site	To show the area which the policy applies	Wythall
PM14	DS1	BDP4	Green Belt boundaries are to change in regards to the identified sites within policy RCBD1. All remaining land will remain the same until a full Green Belt review is conducted	To show the area which the policy applies	Bentley Pouncefoot / Tutnall and Cobley
PM4	Appendix 7 - Conservation Areas in Bromsgrove	BDP20	Bromsgrove (Town Centre) Conservation Area has been separated into two Conservation Areas (St. Johns and Town Centre) and boundaries amended	To show the area which the policy applies	Bromsgrove (St. Johns)

3. Additions to the Policies Map

3.1 The schedule below (Table 2) shows all the new additional information that will be added to the Policies Map. The Schedule sets out which inset map corresponds to the addition, the relevant Local Plan policy (where applicable), the relevant new policy within the Bromsgrove District Plan, a brief explanation to the addition, and the location to where the addition is relevant.

Table 2. Additions to the Policies Map

Map Ref.	Local Plan Policy	Relevant BDP Policy	Explanation	Location (Parish/Ward)
PM15	S35	BDP20	Hewell Grange Conservation Area was designated in 2010 and has been added to the Policies Map to show the area which the policy applies	Tutnall and Cobley
PM16	N/A	BDP18	A blue 'shopping' area has been added in Cofton Hackett to show the area which the policy applies	Cofton Hackett
PM4	N/A	BDP18	A blue 'shopping' area has been added in Sidemoor to show the area which the policy applies	Bromsgrove (Sidemoor)
PM16	N/A	Longbridge AAP	The Longbridge AAP was adopted in 2009 and location has been added to the Policies Map to show the area which the policy applies	Cofton Hackett
PM7	N/A	BDP17	Ten potential development sites have been identified within the Town Centre and have been added to the Policies Map to show the area which the policy applies	Bromsgrove (St. Johns)
PM14	N/A	RCBD1	Residential development sites added in relation to Redditch growth	Bentley Pouncefoot / Tutnall and Cobley

4. Deletions to the Adopted Proposals Map (Affecting the Policies Map)

4.1 The schedule below (Table 3) shows all the deletions to the Adopted Proposals Map that will not be included on the Policies Map, and therefore there are no inset maps for these deletions as they are no longer relevant. The Schedule sets out the Local Plan policy the original Map designation was relevant to, the relevant new BDP policy that is relevant (where applicable), the explanation for its deletion, and the location to where the deletion is relevant.

Table 3. Deletions to the Adopted Proposals Map

Local Plan Policy	Relevant BDP Policy	Explanation	Location (Parish/Ward)
ALVE3	N/A	Policy not replaced	Alvechurch
ALVE4	N/A	Policy not replaced	Alvechurch
ALVE5	Partly replaced by BDP7 & BDP 19	Specific 'low density' areas are no longer located on the Policies Map	Alvechurch
BG2	N/A	Policy not replaced	Barnt Green
BG3	N/A	Policy not replaced	Barnt Green
BG4	Partly replaced by BDP7 & BDP 19	Specific 'special character' areas are no longer located on the Policies Map	Lickey and Blackwell
BE2	Partly superseded by BDP25	Specific play area no longer on Policies Map	Beoley
BROM6	BDP14	Specific allocation no longer on Policies Map - remains employment land	Stoke Prior
BROM7	N/A	Specific allocation no longer on Policies Map - now residential land	Bromsgrove (Charford)
BROM8	BDP14	Specific allocation no longer on Policies Map - remains employment land	Bromsgrove (Stoke Heath)
BROM8A	BDP14	Specific allocation no longer on Policies Map - remains employment land	Bromsgrove (Stoke Heath)
BROM9	N/A	Policy not replaced - remains residential	Bromsgrove (Sidemoor)
BROM28 (a)	BDP25	Policy not replaced - remains residential land	Bromsgrove (Slideslow)

Bromsgrove District Plan Policies Map
Deletions to the Adopted Proposals Map

Table 3. Deletions to the Adopted Proposals Map *continued*

Local Plan Policy	Relevant BDP Policy	Explanation	Location (Parish/Ward)
BR0M28 (h)	BDP25	Policy not replaced - remains Green Belt	Catshill
BR0M28 (j)	BDP25	Policy not replaced - remains Green Belt	Catshill
BR0M28 (k)	BDP25	Policy not replaced - remains Green Belt	Catshill
BR0M30	BDP15	Policy not replaced - remains Green Belt with links in BDP15	Bromsgrove (Stoke Heath)
CH1	N/A	Policy not replaced - remains residential	Cofton Hackett
FIN3	Partly superseded by BDP25	Specific play area no longer on Policies Map - remains Green Belt	Finstall
FIN4	Partly superseded by BDP25	Specific play area no longer on Policies Map - remains Green Belt	Finstall
FR2	Partly superseded by BDP25	Specific play area no longer on Policies Map - remains Green Belt	Frankley
HAG1	N/A	Policy not replaced - remains residential	Hagley
HAG5	BDP21	Policy not replaced - remains Green Belt	Hagley
ROM2	Partly superseded by BDP25	Specific play area no longer on Policies Map - remains Green Belt	Romsley
RUB4	N/A	Policy not replaced - remains residential	Rubery
RUB5	Partly superseded by BDP25	Specific play area no longer on Policies Map - remains Green Belt	Rubery
TARD1	Partly superseded by BDP25	Specific play area no longer on Policies Map - remains Green Belt	Tardebigge
WYT4	BDP15	Policy not replaced - remains Green Belt with links in BDP15	Wythall
WYT5	Partly superseded by BDP25	Specific designation no longer on Policies Map - remains Green Belt	Wythall
WYT6	Partly superseded by BDP25	Specific designation no longer on Policies Map - remains Green Belt	Wythall

Table 3. Deletions to the Adopted Proposals Map *continued*

Local Plan Policy	Relevant BDP Policy	Explanation	Location (Parish/Ward)
WYT7	Partly superseded by BDP25	Specific designation no longer on Policies Map - remains Green Belt	Wythall
WYT8	Partly superseded by BDP25	Specific designation no longer on Policies Map - remains Green Belt	Wythall
WYT10	N/A	Policy not replaced	Wythall
WYT11	Partly superseded by BDP25	Specific designation no longer on Policies Map - remains Green Belt	Wythall
WYT13	Partly superseded by BDP25	Specific designation no longer on Policies Map - remains Green Belt	Wythall
DS9	Landscape Character Assessment - Worcestershire County Council	Specific designations no longer on Policies Map	District Wide
C1	Landscape Character Assessment - Worcestershire County Council	Specific designations no longer on Policies Map	District Wide
E2	BDP5B and BDP14	Specific designations no longer on Policies Map - remains Employment land. Redditch related employment needs covered by Policy BDP5B	Beoley
E3	BDP14	Specific allocation no longer on Policies Map - remains employment land	District Wide
TR2	N/A	Policy not replaced	District Wide
TR3	N/A	Policy not replaced	District Wide
RAT11	N/A	Policy not replaced	District Wide

5. No Changes to Adopted Proposals Map (Affecting the Policies Map)

5.1 The schedule below (Table 4) shows all the relevant designations on the adopted Proposals Map that are still applicable to the Policies Map. The Schedule sets out which inset map corresponds to the 'no change' designation, the relevant Local Plan policy, the new BDP policy that is still relevant, and an explanation for its continued inclusion within the Policies Map, and the location to where the designation is relevant.

Table 4. No Changes to Adopted Proposals Map

Map Ref.	Local Plan Policy	Relevant BDP Policy	Explanation	Location (Parish/Ward)
PM1	ALVE2	BDP18	The blue 'shopping' area identified on the Policies Map will remain the same	Alvechurch
PM17	BEL1	BDP4	Village envelopes will remain the same until a full Green Belt review is conducted	Belbroughton
PM3	BE1	BDP4	Village envelopes will remain the same until a full Green Belt review is conducted	Beoley
PM6	BOUR1	BDP4	Village envelopes will remain the same until a full Green Belt review is conducted	Bournheath
PM7	BROM11	BDP17	The Town Centre Zone identified on Policies Map will remain the same	Bromsgrove (St. Johns)
PM6	BROM23	BDP18	The blue 'shopping' area identified on the Policies Map will remain the same	Catshill
PM8	BROM24	BDP18	The blue 'shopping' area identified on the Policies Map will remain the same	Bromsgrove (Charford)
PM18	BUR1	BDP4	Village envelopes will remain the same until a full Green Belt review is conducted	Bromsgrove (Linthurst)
PM19	CL1	BDP4	Village envelopes will remain the same until a full Green Belt review is conducted	Clent
PM6	FAR1	BDP4	Village envelopes will remain the same until a full Green Belt review is conducted	Belbroughton
PM18	FIN1	BDP4	Village envelopes will remain the same until a full Green Belt review is conducted	Finstall

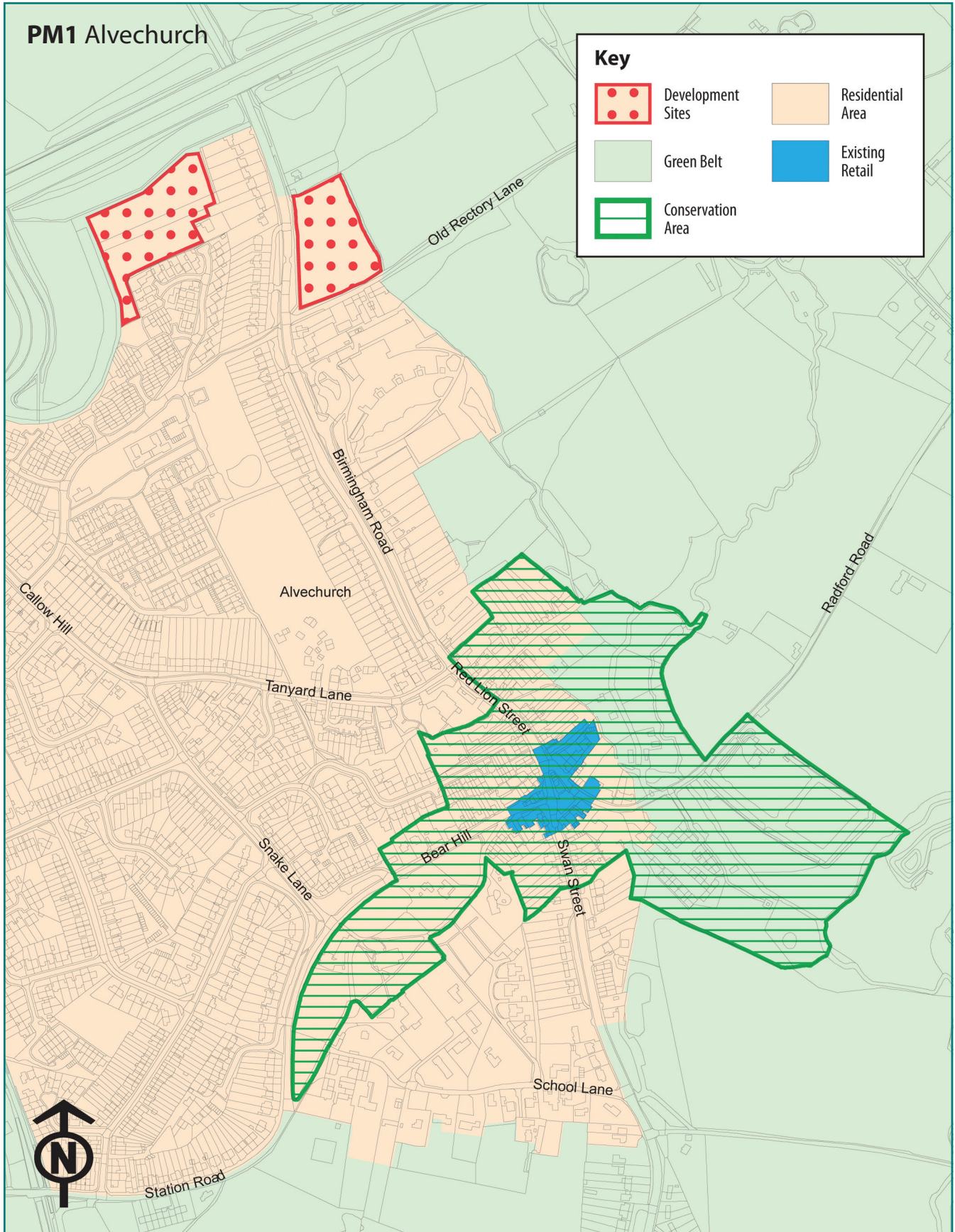
Table 4. No Changes to Adopted Proposals Map *continued*

Map Ref.	Local Plan Policy	Relevant BDP Policy	Explanation	Location (Parish/Ward)
PM19	HOL1	BDP4	Village envelopes will remain the same until a full Green Belt review is conducted	Clent
PM20	HOP1	BDP4	Village envelopes will remain the same until a full Green Belt review is conducted	Alvechurch
PM21	ROM1	BDP4	Village envelopes will remain the same until a full Green Belt review is conducted	Romsley
PM22	ROW1	BDP4	Village envelopes will remain the same until a full Green Belt review is conducted	Alvechurch
PM12 & PM13	WYT1	BDP18	The blue 'shopping' areas identified on the Policies Map will remain the same	Wythall
PM1, PM2, PM3, PM10, PM15, PM17, PM19, PM23 & PM24	Appendix 7 - Conservation Areas in Bromsgrove	BDP20	Besides the Town Centre Conservation Area (as mentioned in amendments) and Hewell Grange Conservation Area (mentioned in additions) all other Conservation Areas will remain the same	District Wide
PM8, PM11, PM16, PM25 & PM26	E1	BDP13 and BDP14	All employment areas will remain the same except where a change of use has occurred to residential (such as Breme Park)	District Wide

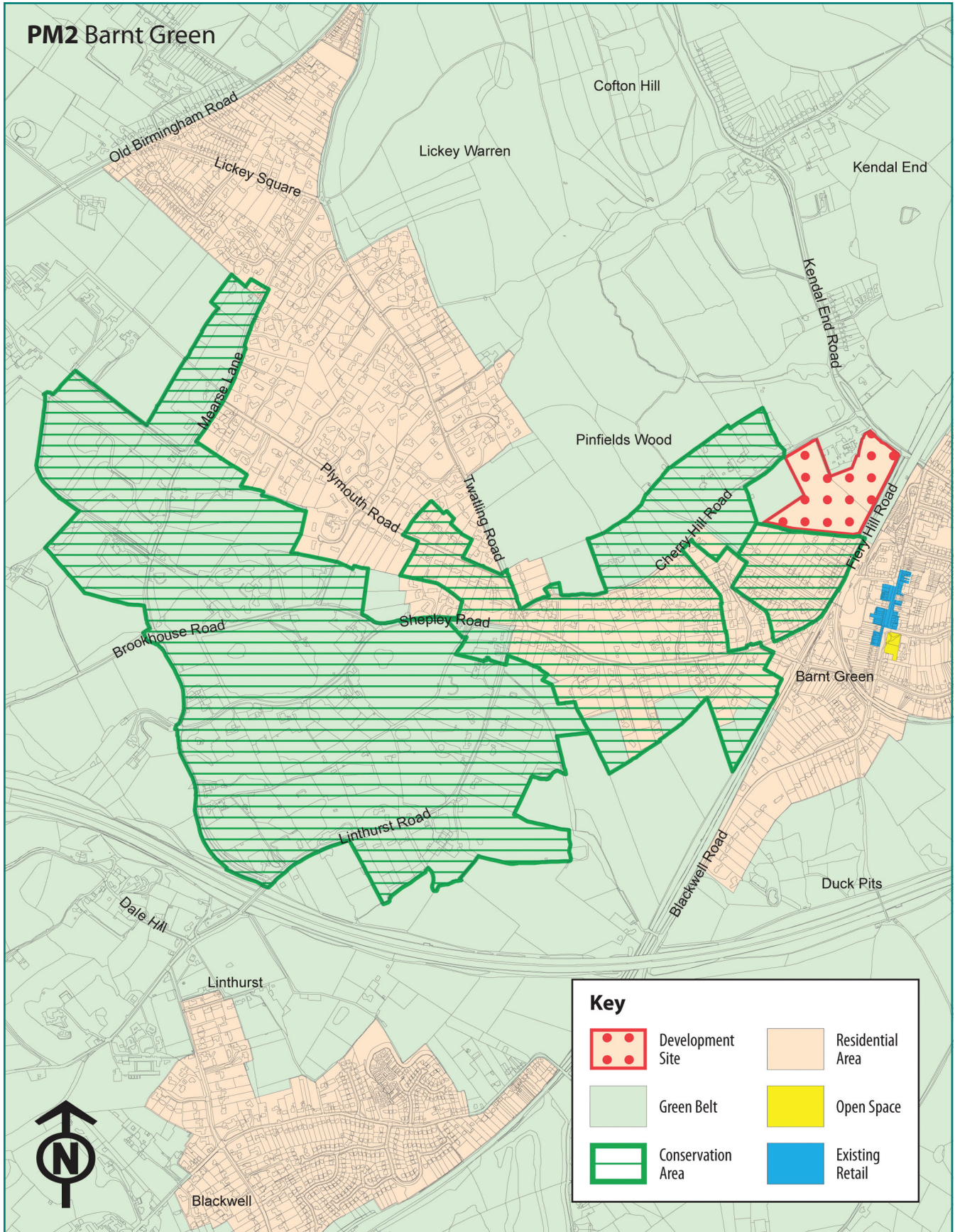
Appendix I - List of maps

List of maps			
Map Ref.		Map Ref.	
PM1	Alvechurch	PM2	Barnt Green
PM3	Beoley	PM4	Bromsgrove (North)
PM5	Aston Fields	PM6	Catshill
PM7	Bromsgrove Town Centre	PM8	Bromsgrove (South)
PM9	Frankley	PM10	Hagley
PM11	Rubery	PM12	Wythall (North)
PM13	Wythall (South)	PM14	Redditch Cross Boundary
PM15	Hewell Grange Conservation Area	PM16	Cofton Hackett / Longbridge
PM17	Belbroughton	PM18	Burcot / Finstall
PM19	Clent / Holy Cross	PM20	Hopwood
PM21	Romsley	PM22	Rowney Green
PM23	Dodford Conservation Area	PM24	Worcestershire and Birmingham Canal Conservation Area
PM25	Stoke Prior Employment Areas	PM26	Wythall Employment Area

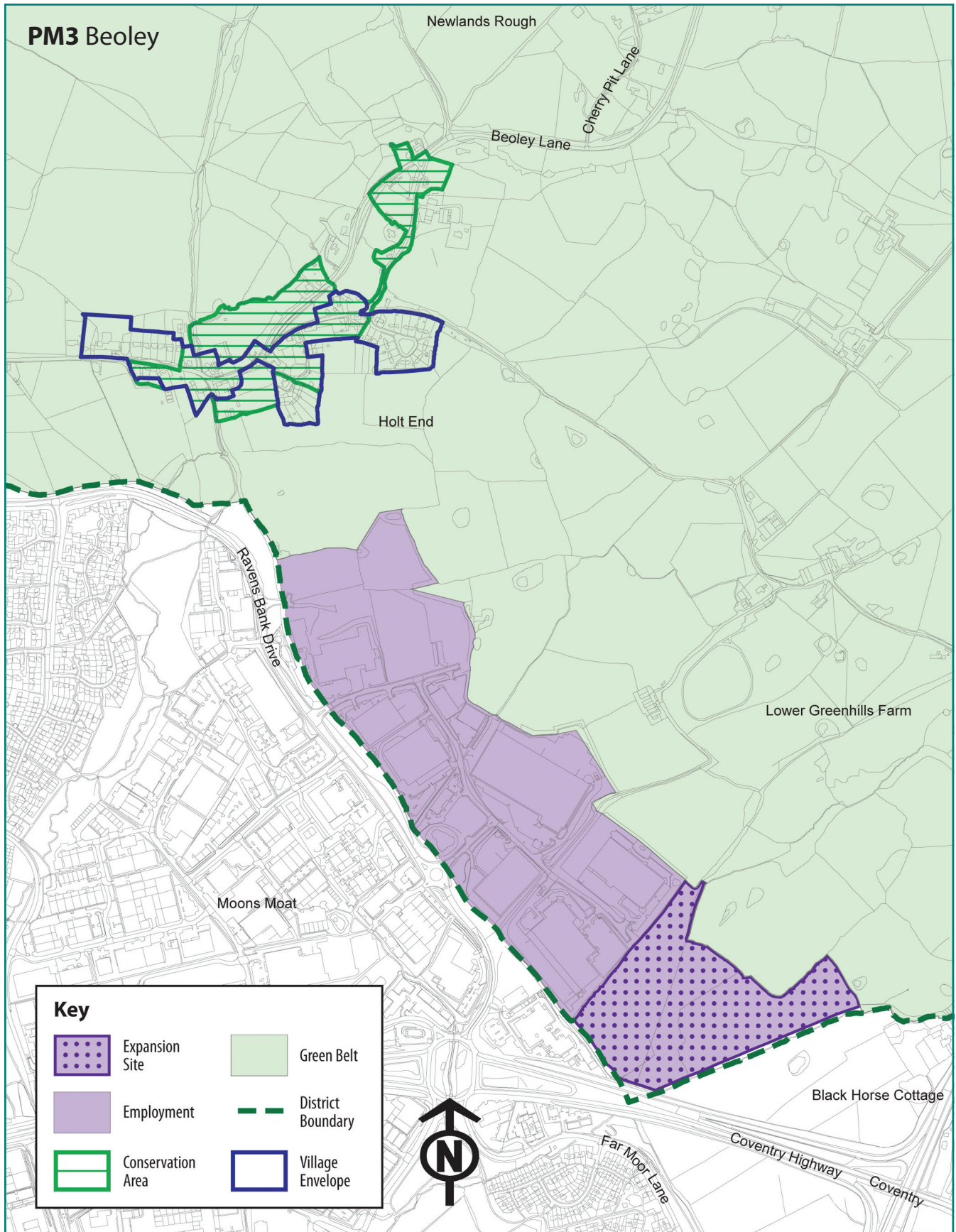
Appendix II - Inset Maps



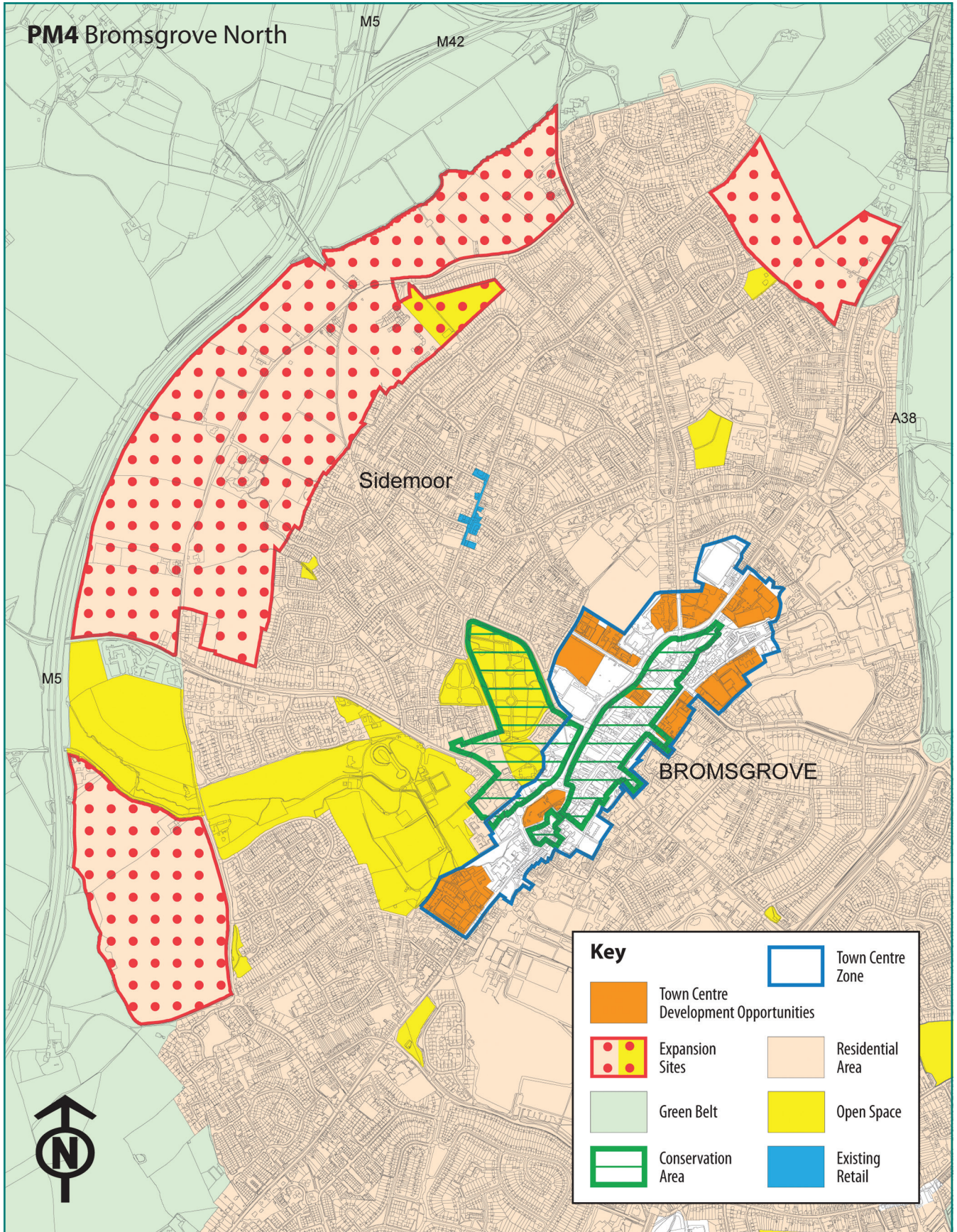
© Crown Copyright and database rights 2014. Ordnance Survey 100023519.



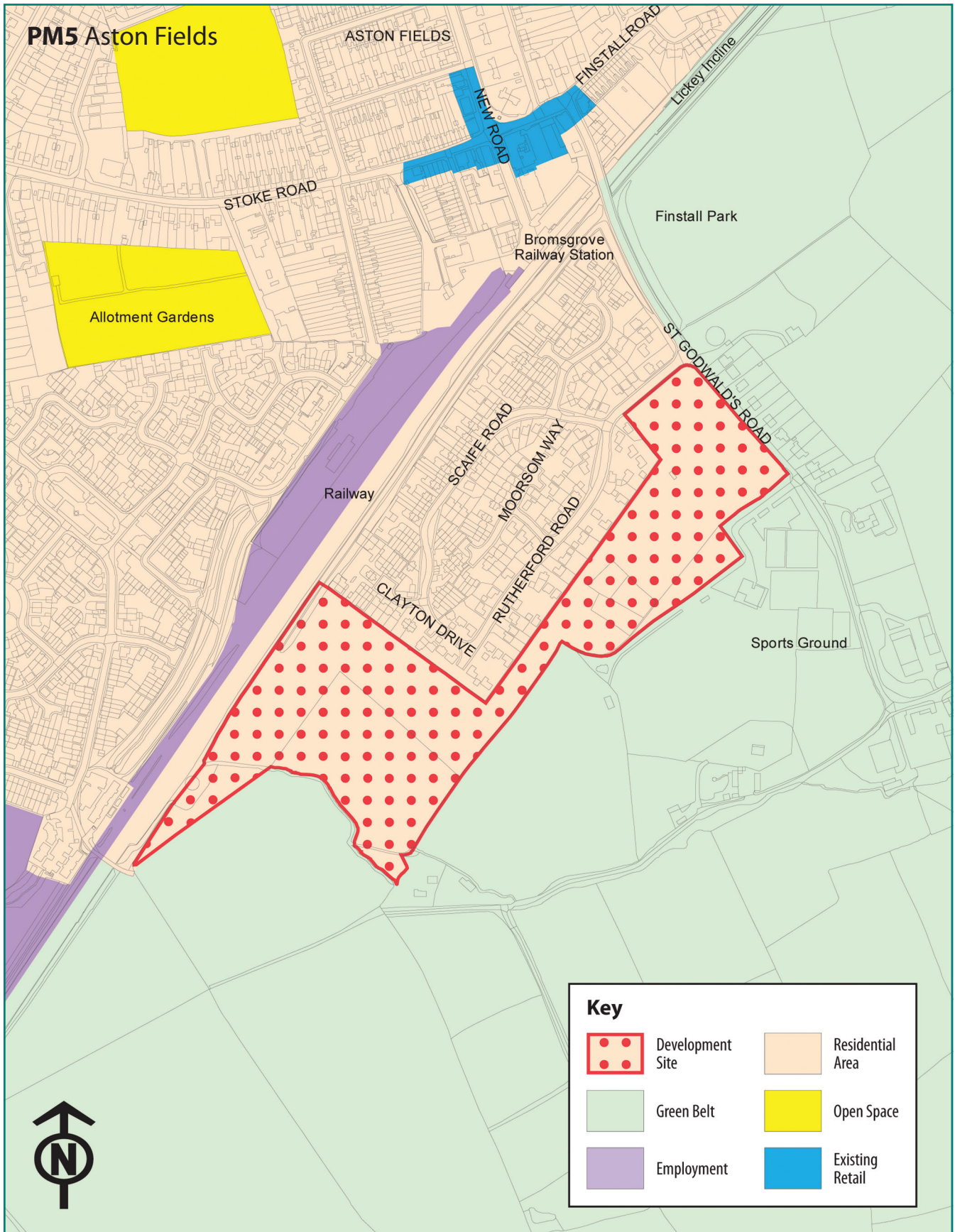
© Crown Copyright and database rights 2014. Ordnance Survey 100023519.



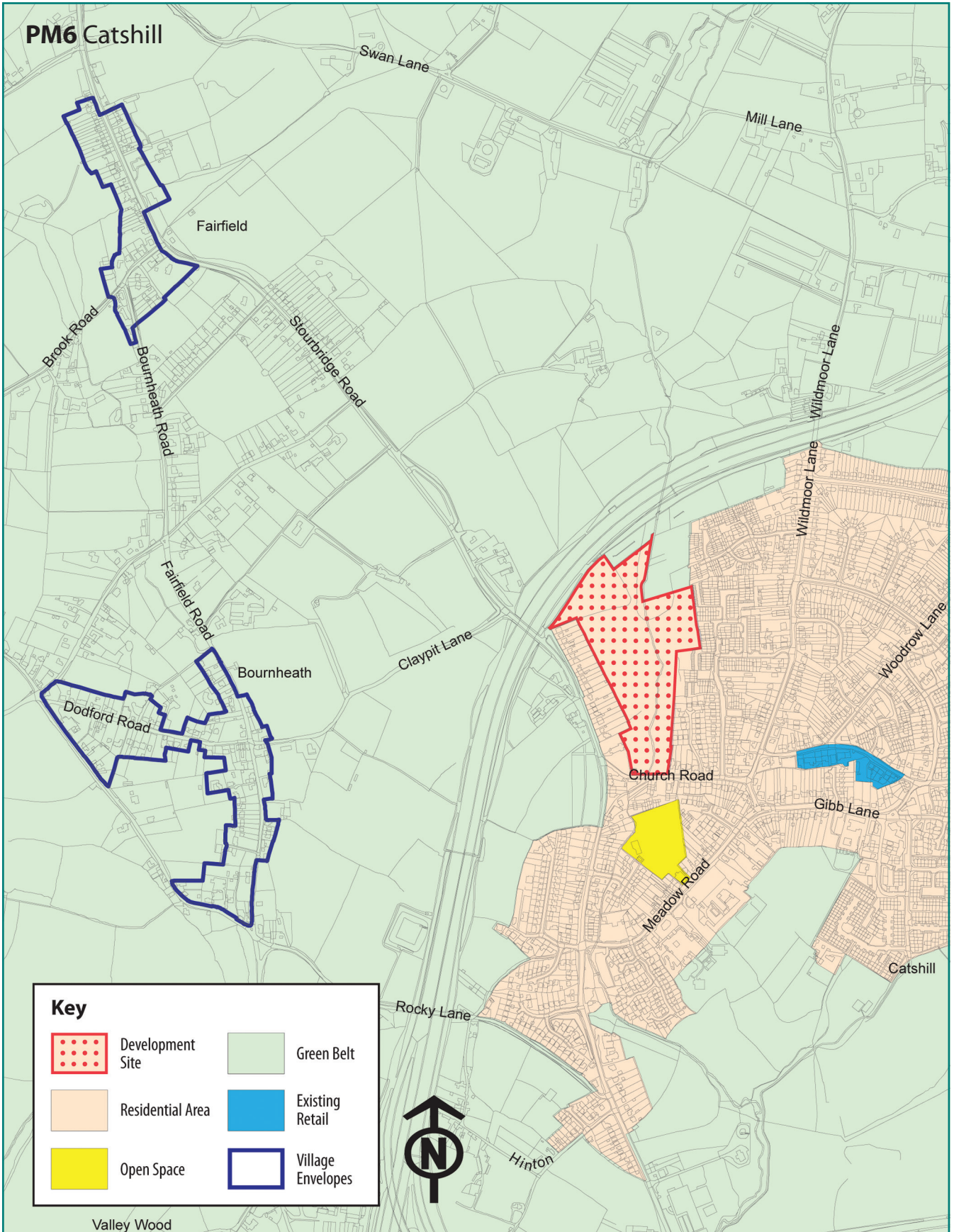
© Crown Copyright and database rights 2014. Ordnance Survey 100023519.



© Crown Copyright and database rights 2014. Ordnance Survey 100023519.

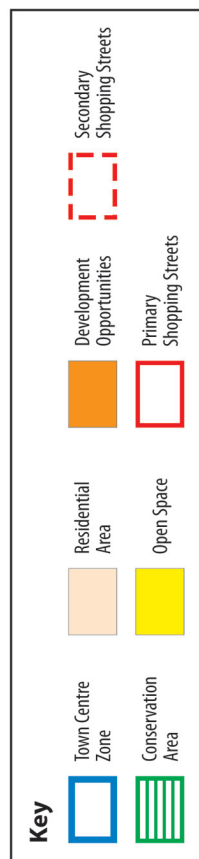
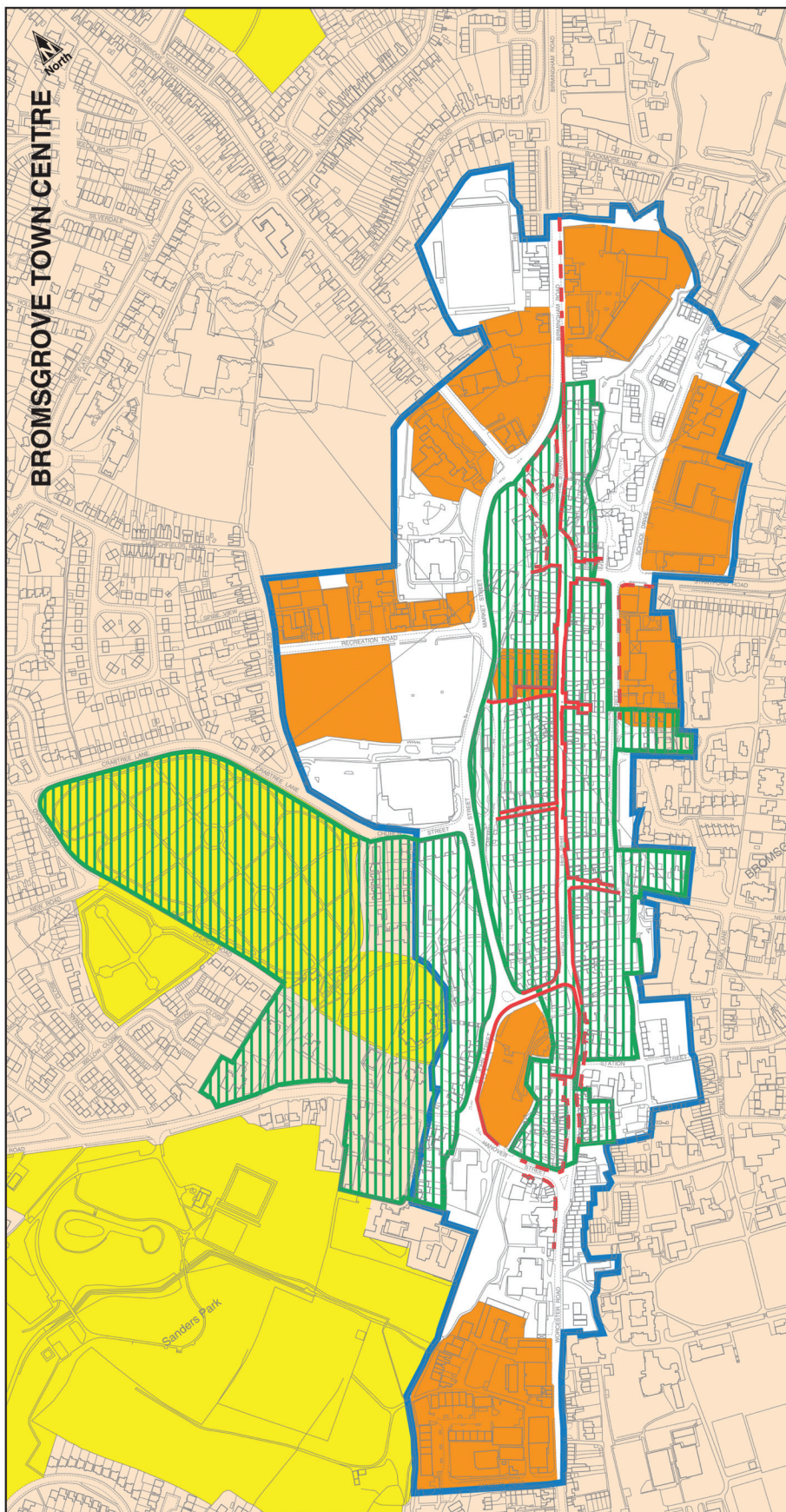


© Crown Copyright and database rights 2014. Ordnance Survey 100023519.

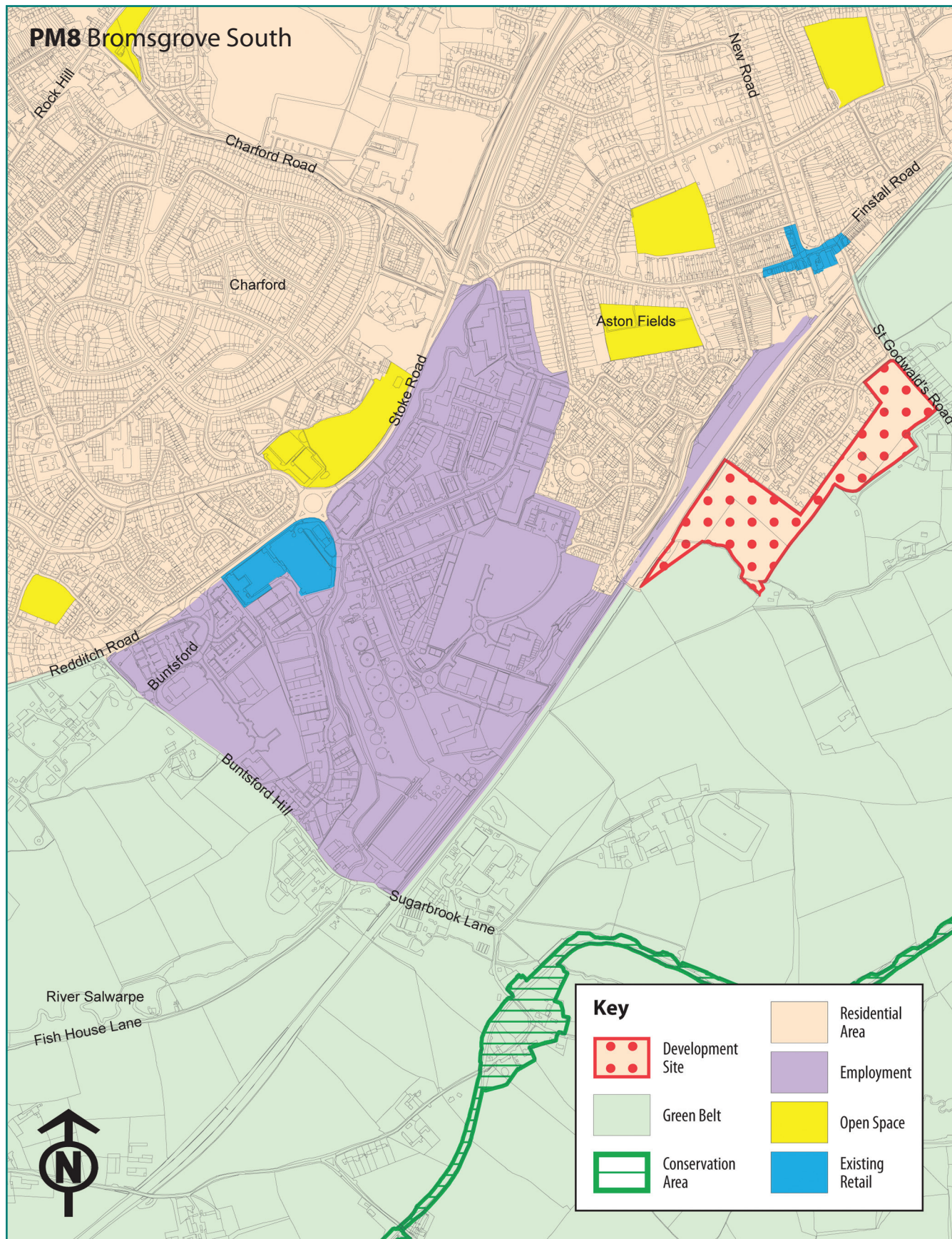


© Crown Copyright and database rights 2014. Ordnance Survey 100023519.

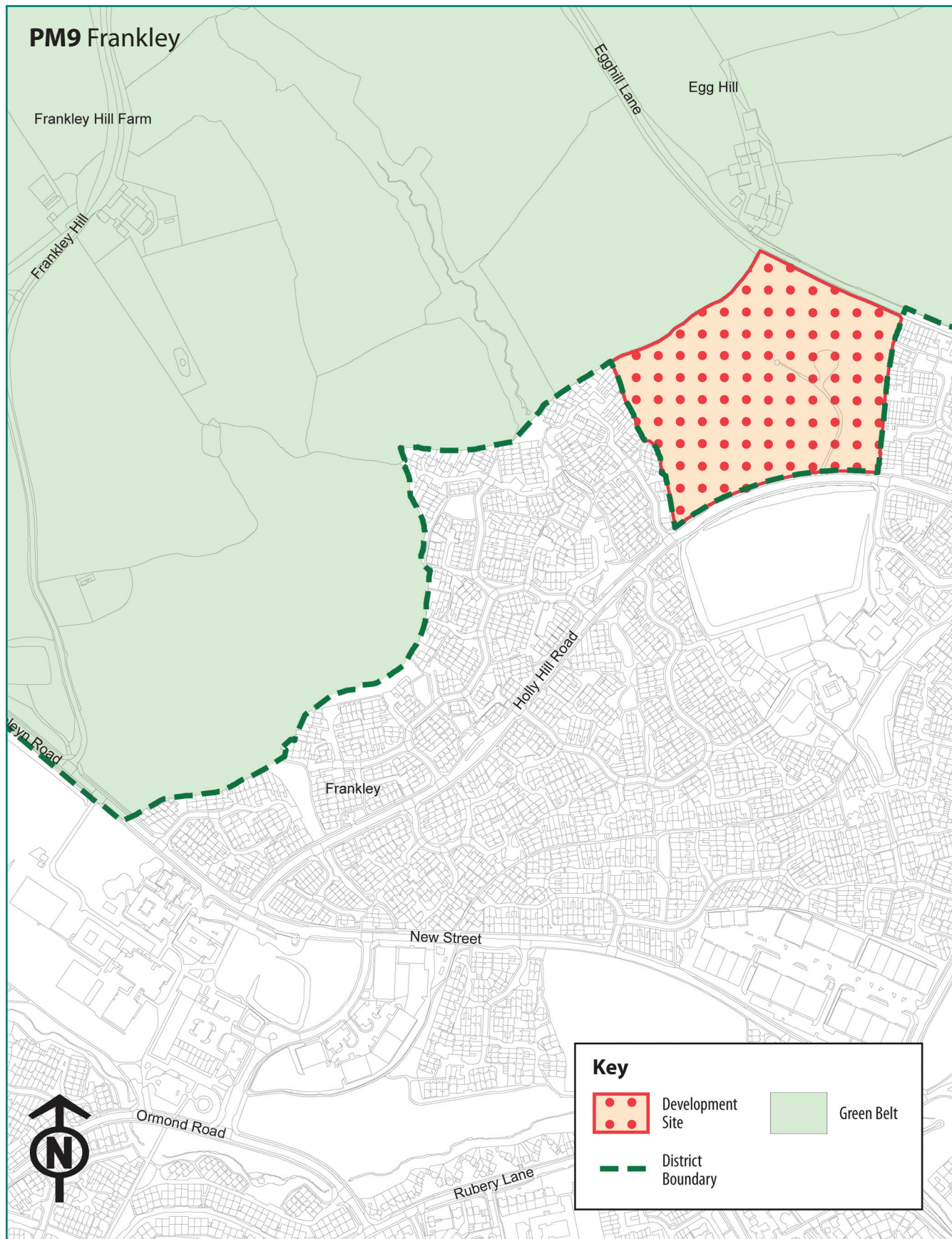
PM7 Bromsgrove Town Centre



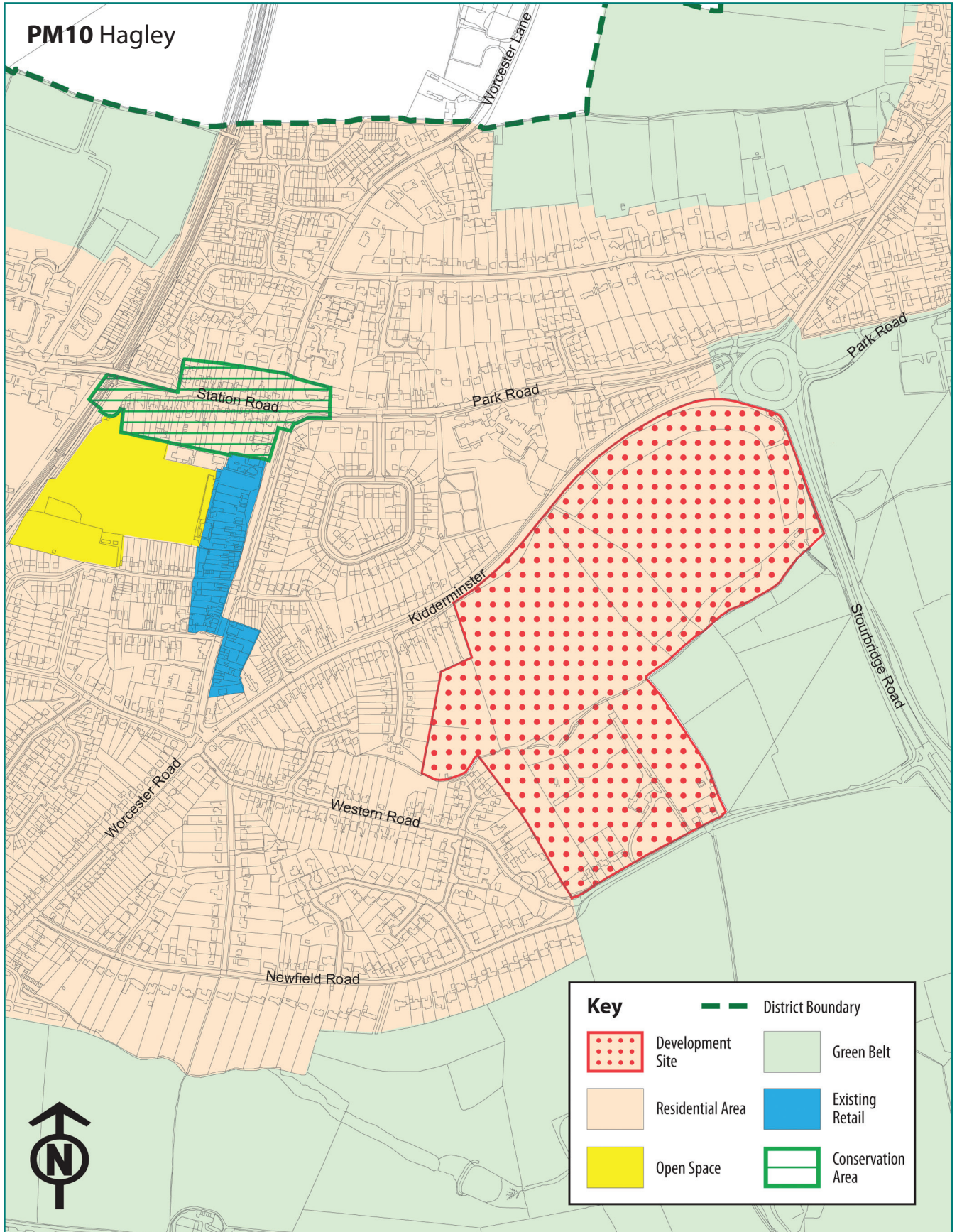
© Crown Copyright and database rights 2014, Ordnance Survey 100023519.



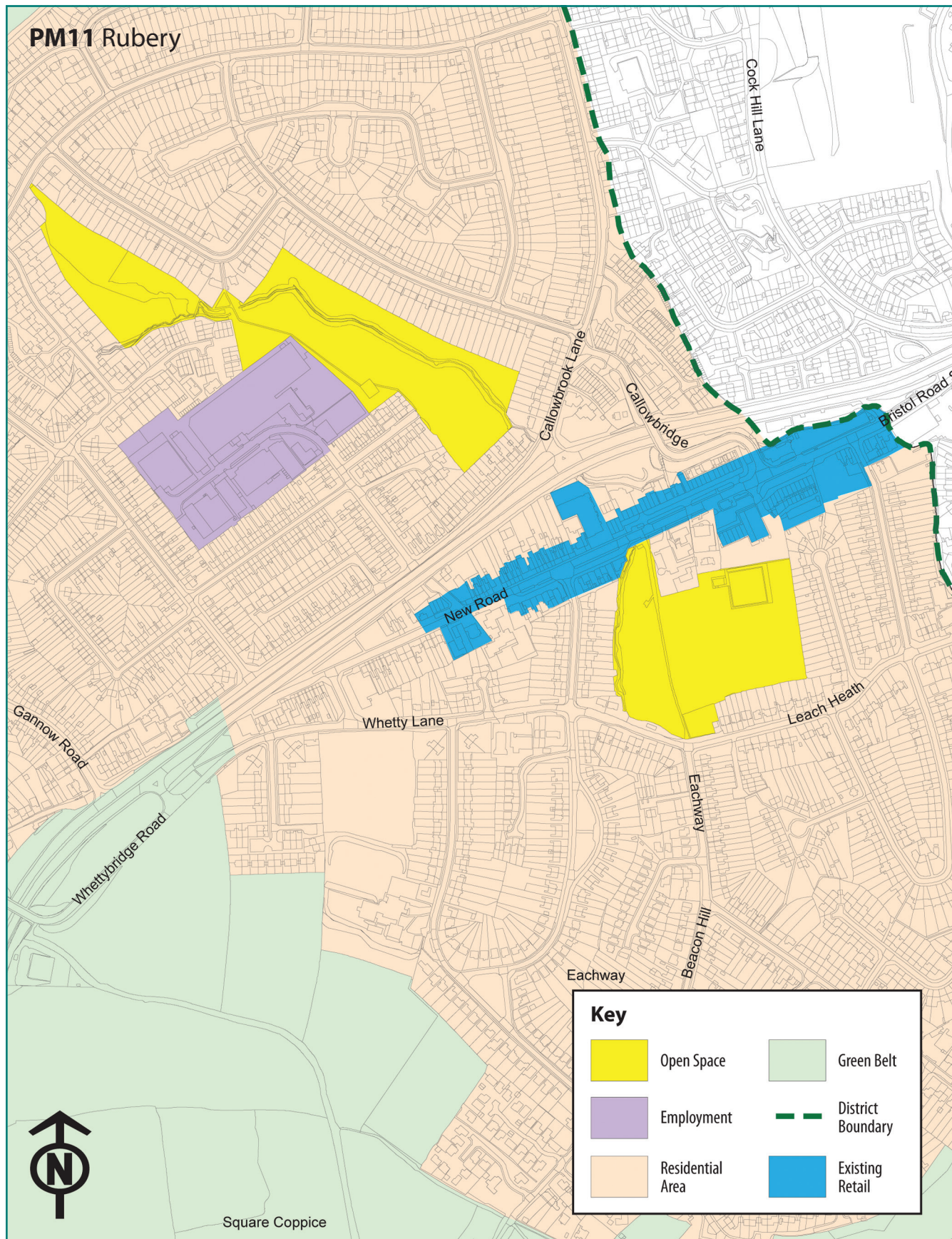
© Crown Copyright and database rights 2014. Ordnance Survey 100023519.



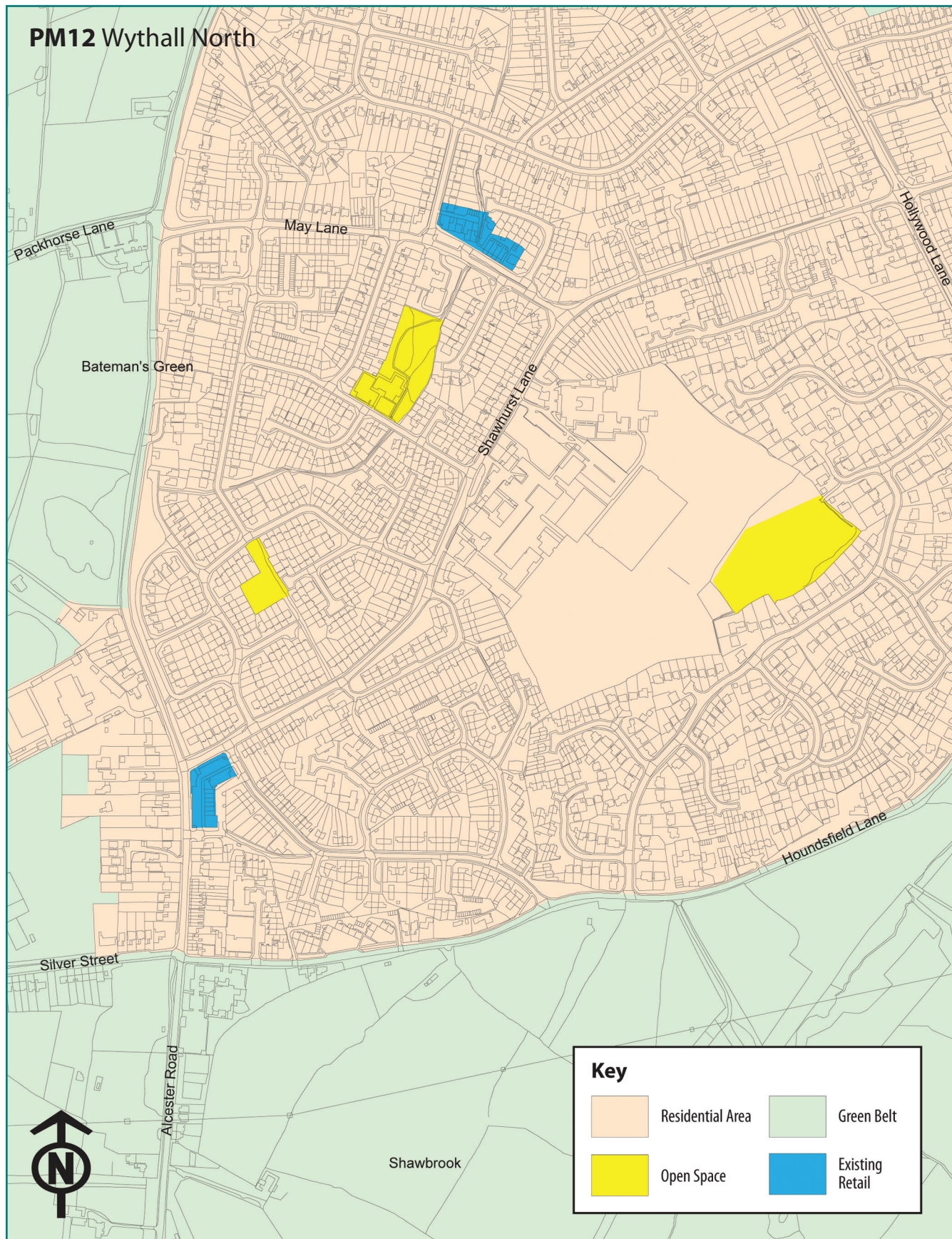
© Crown Copyright and database rights 2014. Ordnance Survey 100023519.



© Crown Copyright and database rights 2014. Ordnance Survey 100023519.



© Crown Copyright and database rights 2014. Ordnance Survey 100023519.

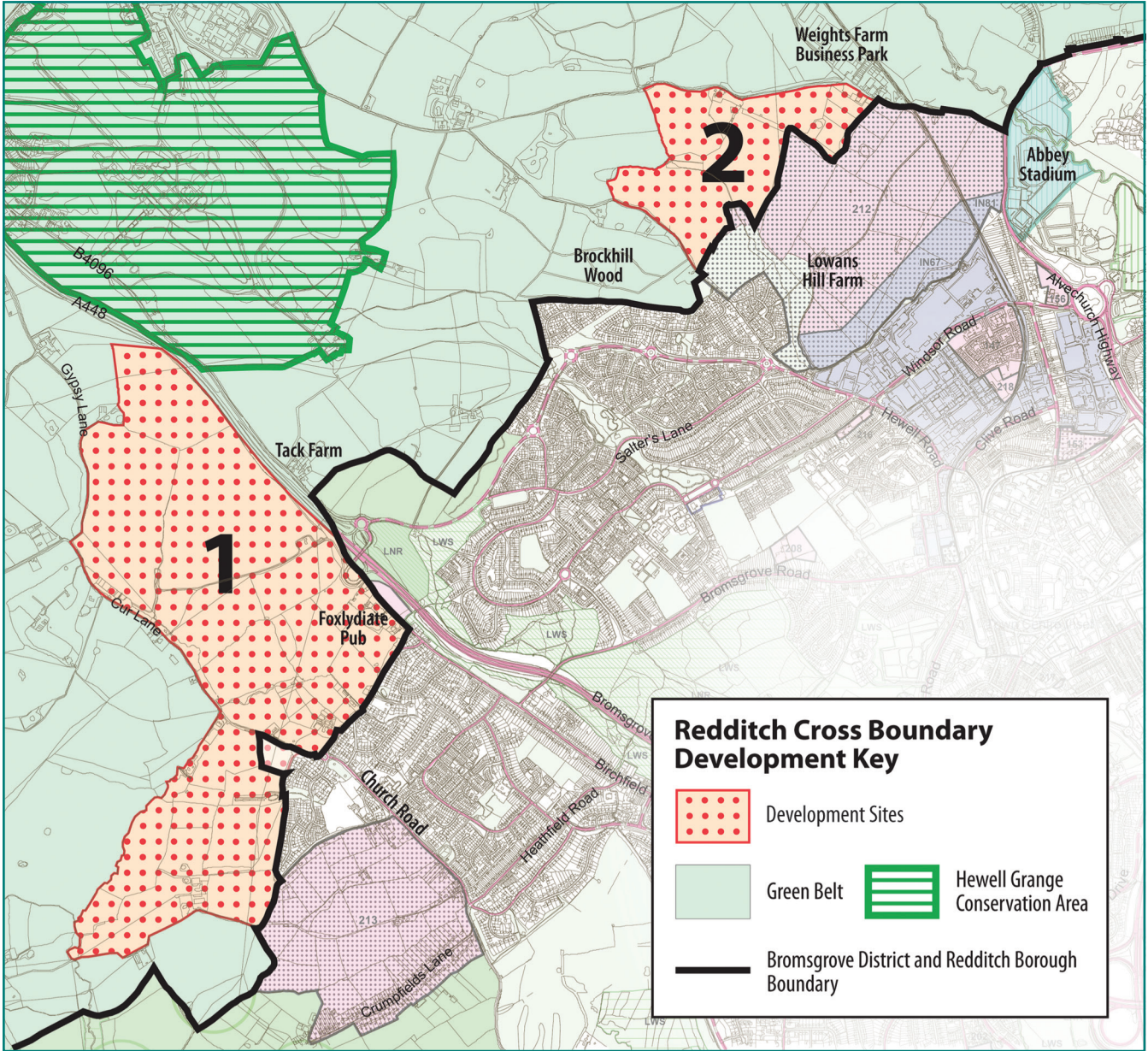


© Crown Copyright and database rights 2014. Ordnance Survey 100023519.

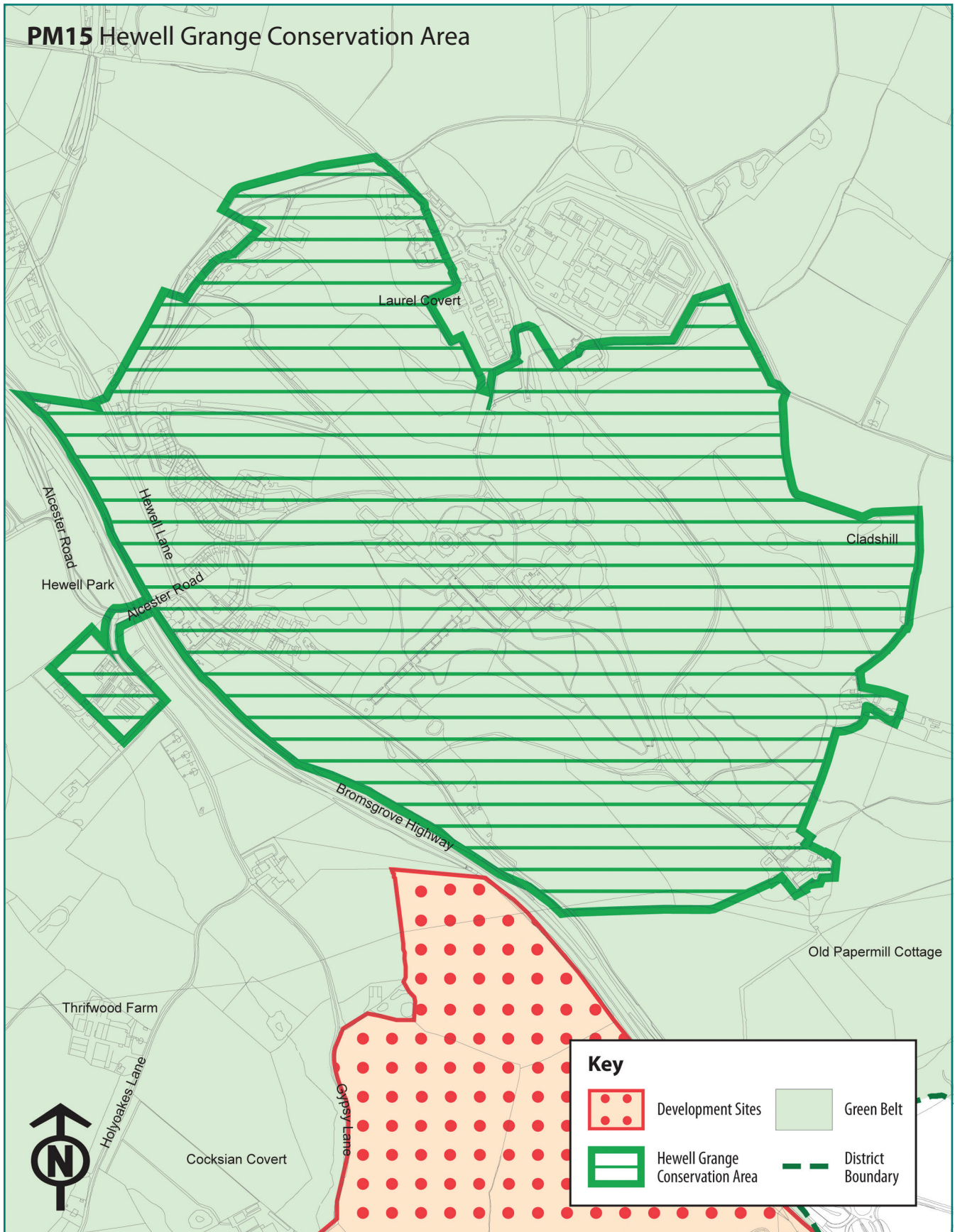


© Crown Copyright and database rights 2014. Ordnance Survey 100023519.

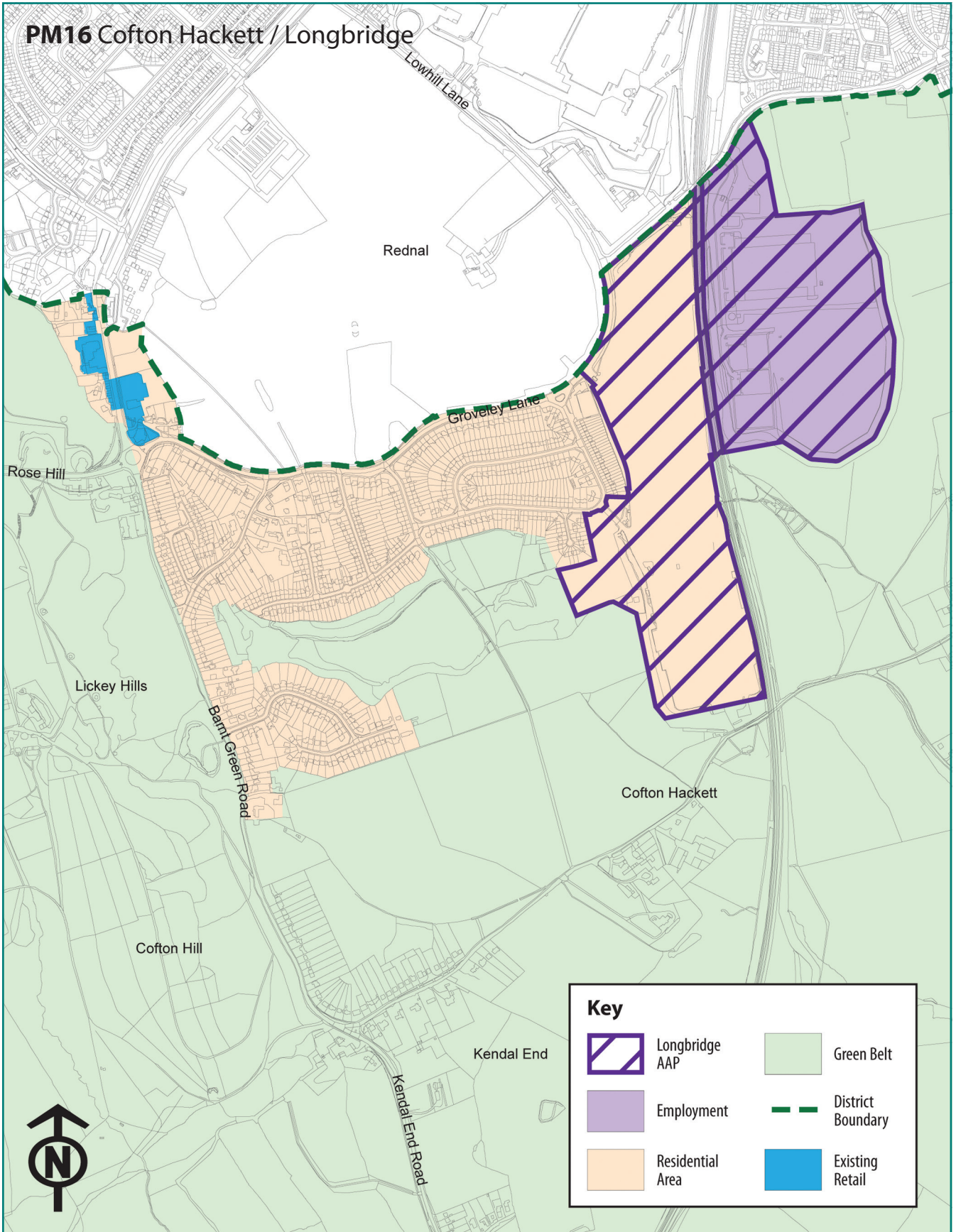
PM14 Redditch Cross Boundary



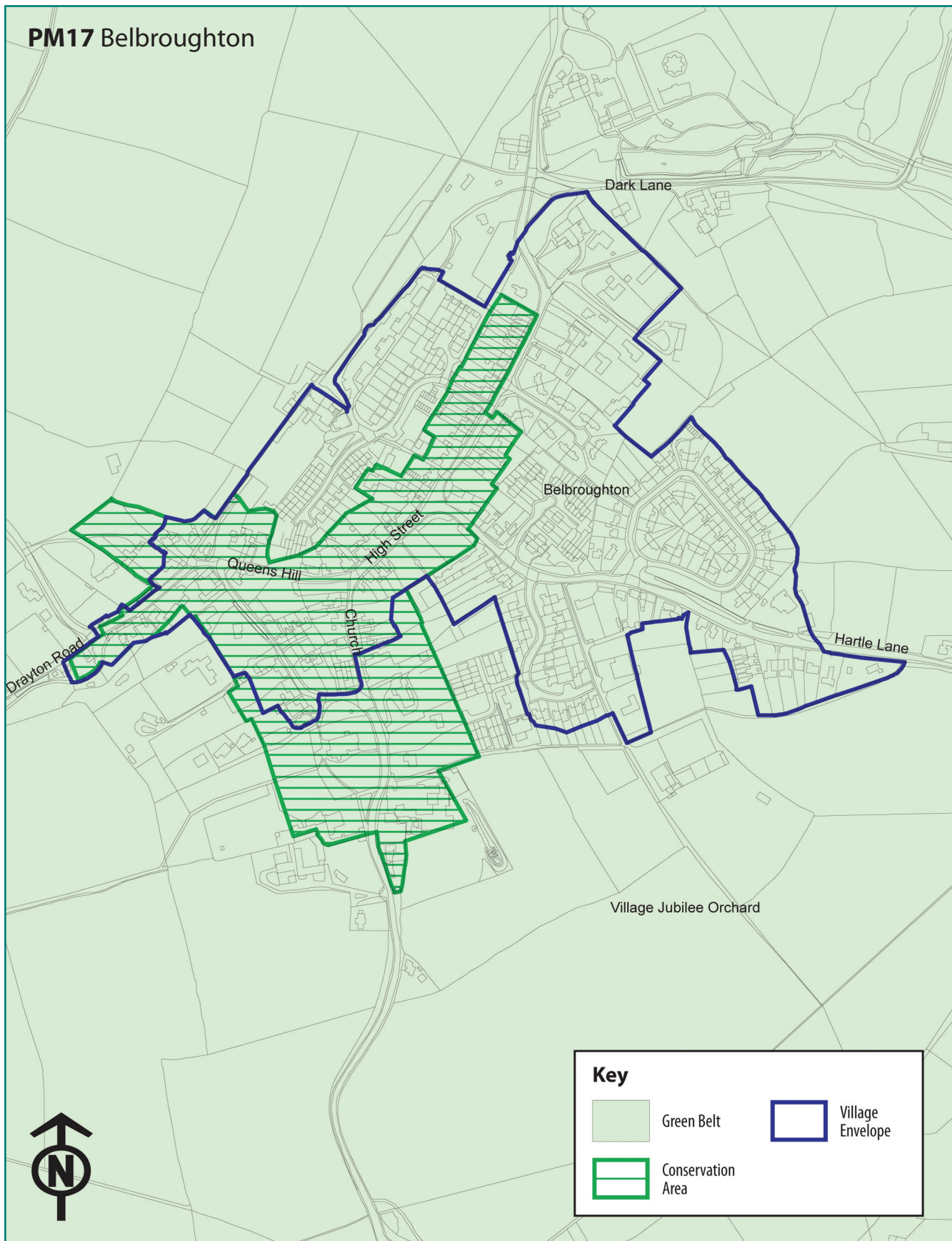
© Crown Copyright and database rights 2014. Ordnance Survey 100023519.



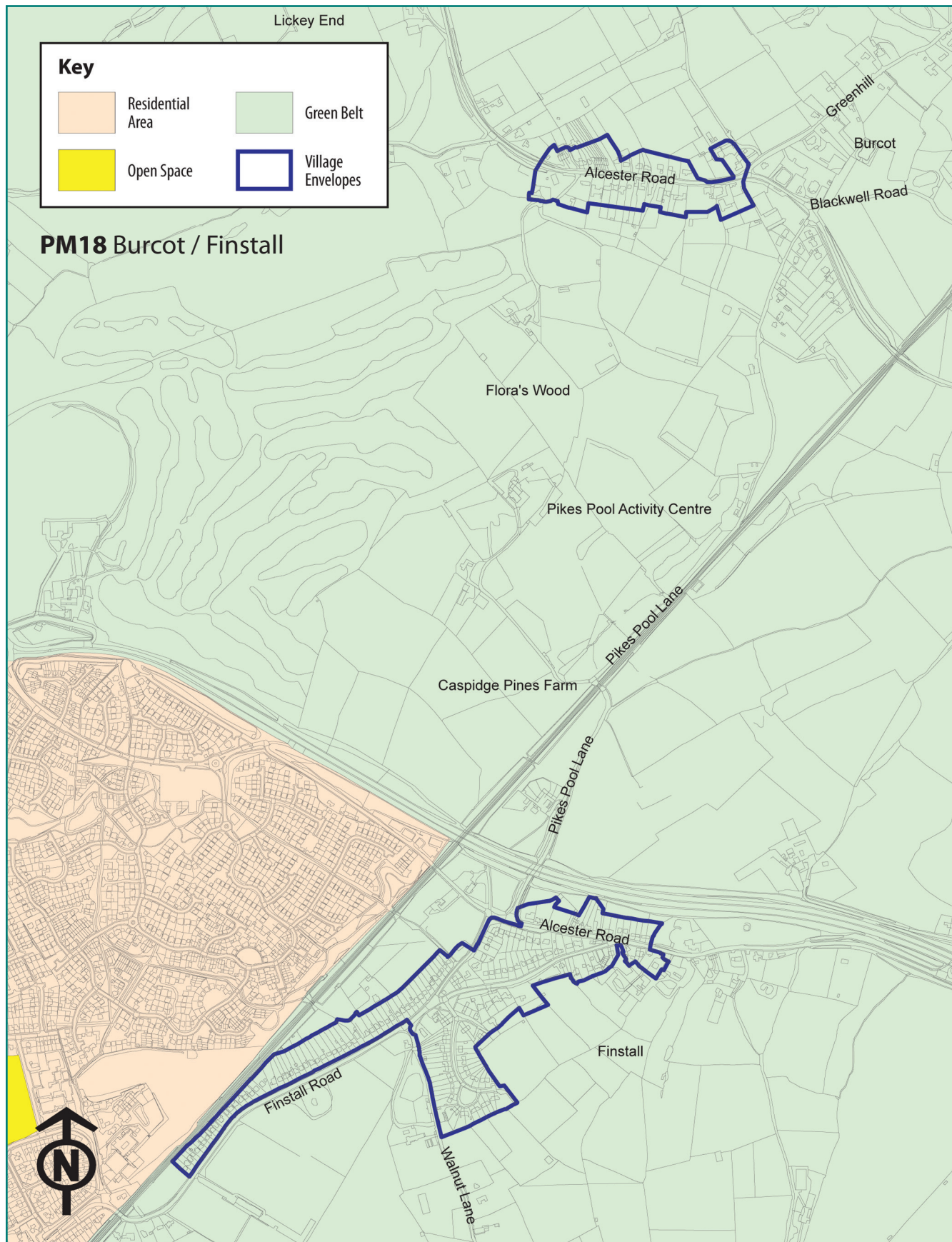
© Crown Copyright and database rights 2014. Ordnance Survey 100023519.



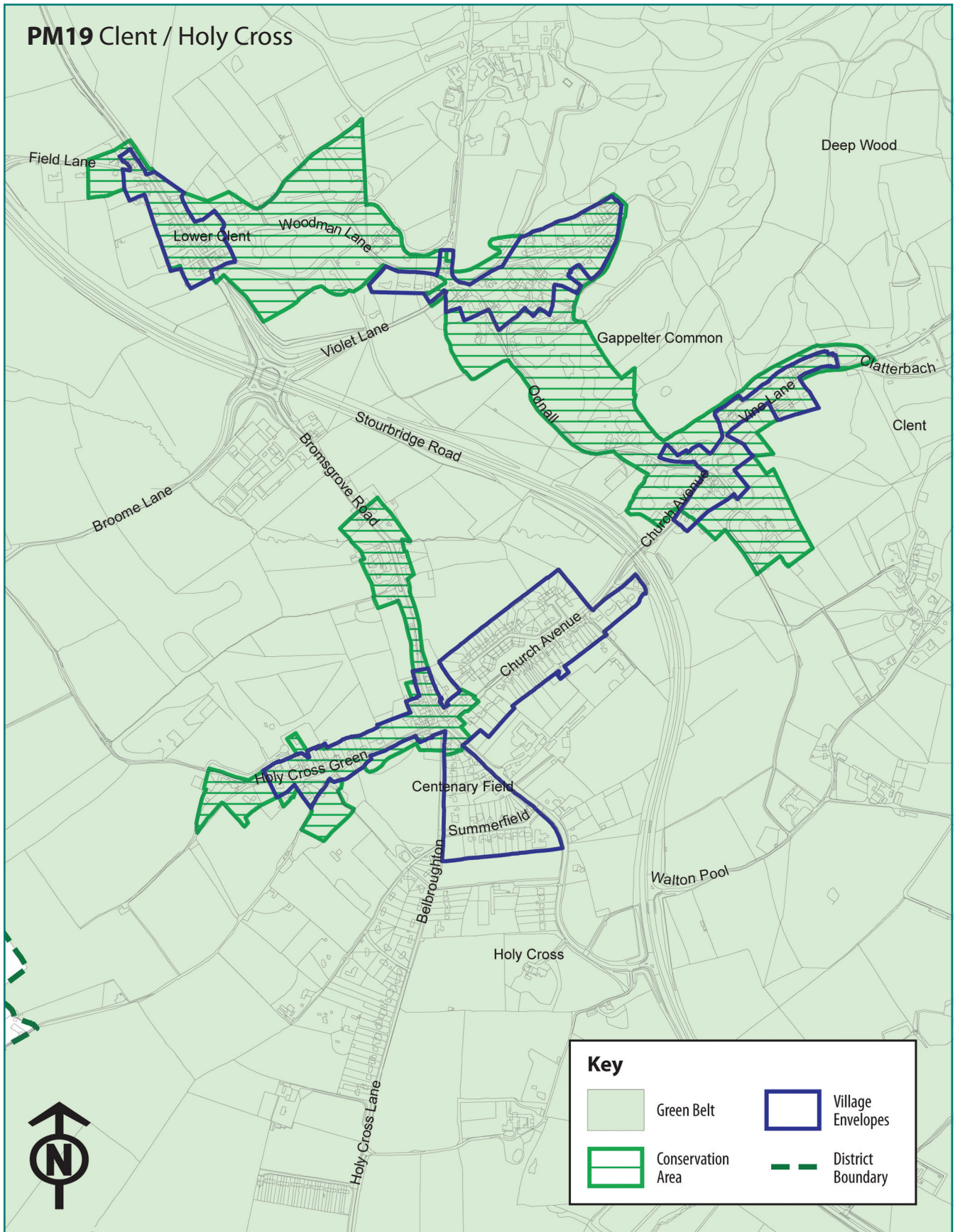
© Crown Copyright and database rights 2014. Ordnance Survey 100023519.



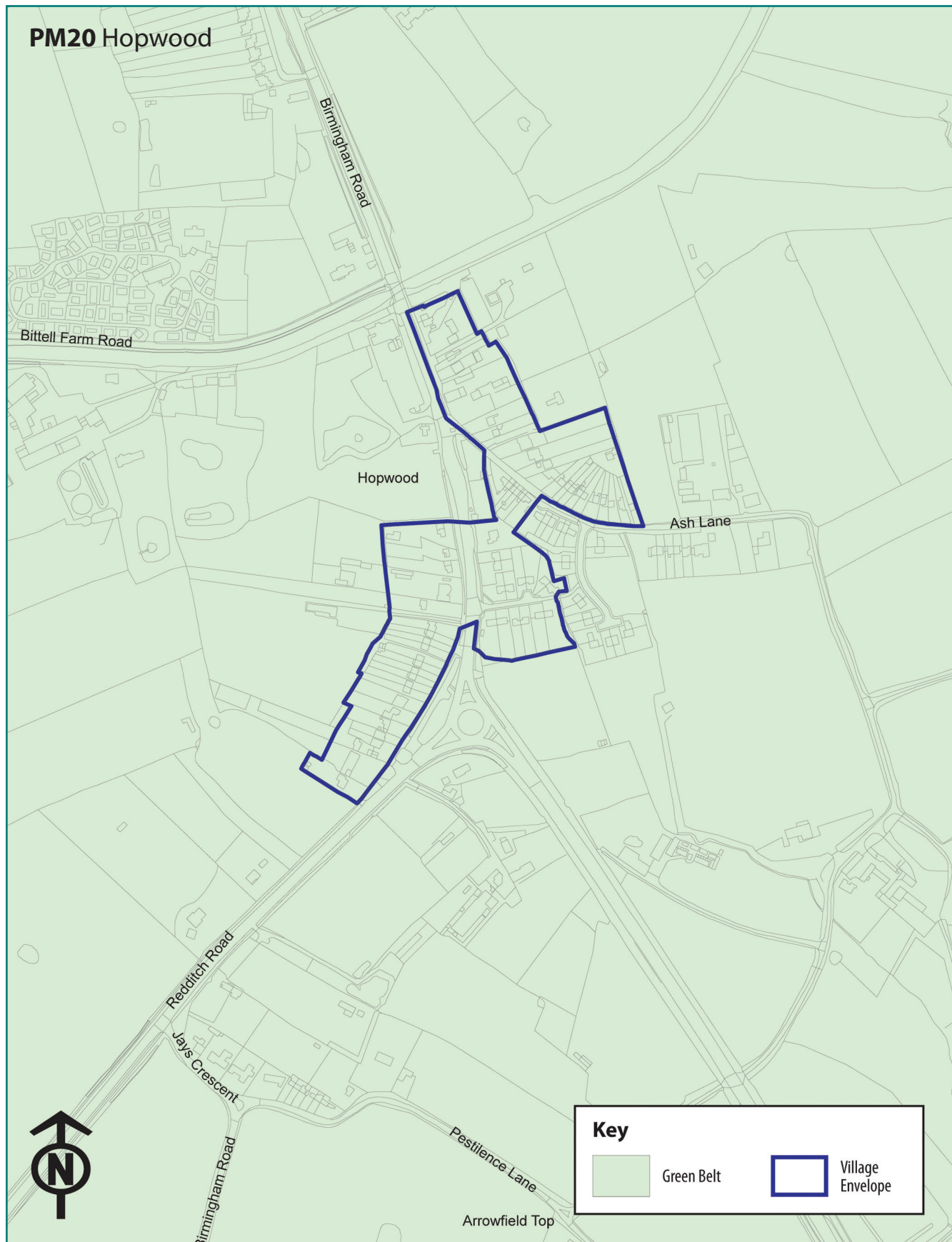
© Crown Copyright and database rights 2014. Ordnance Survey 100023519.



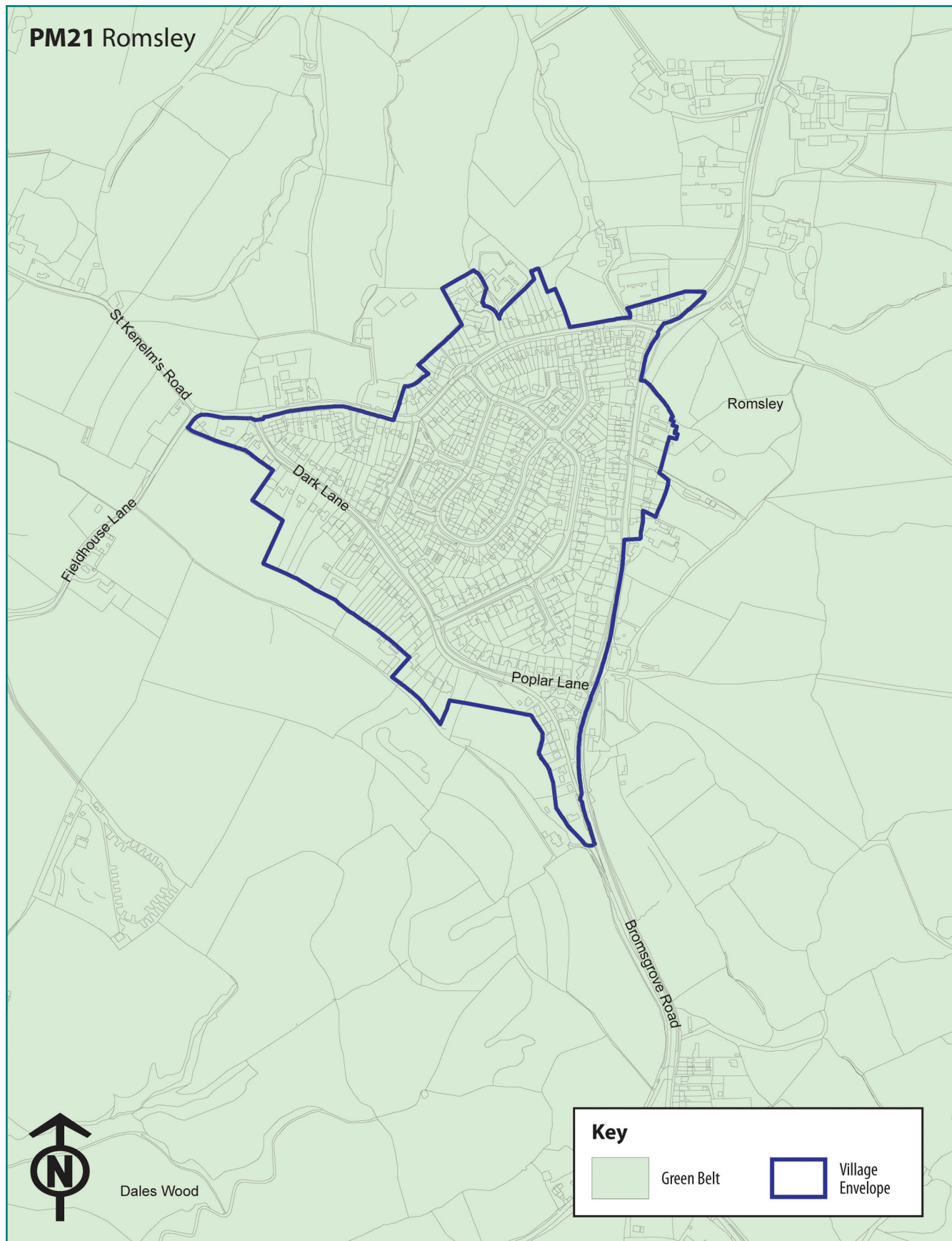
© Crown Copyright and database rights 2014. Ordnance Survey 100023519.



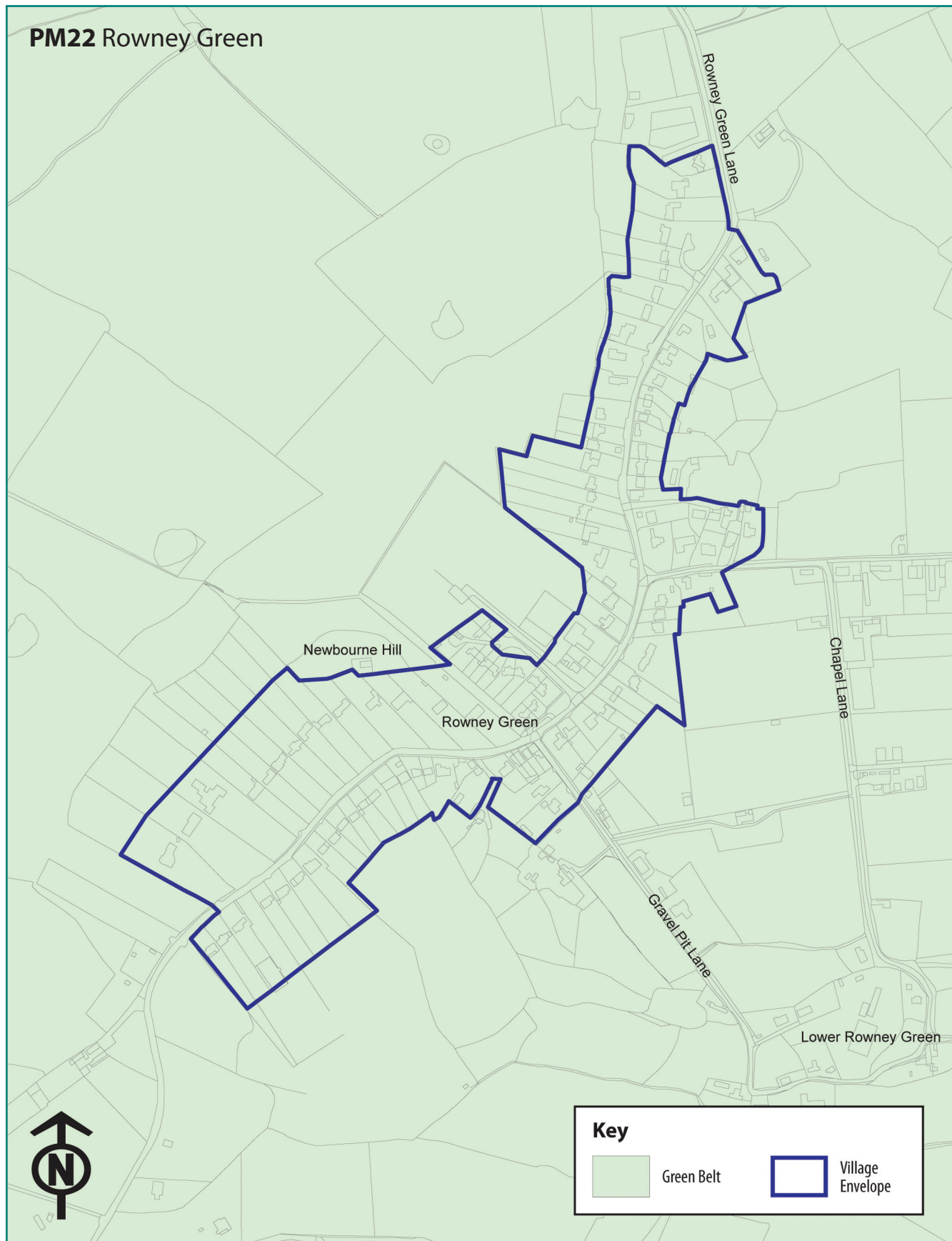
© Crown Copyright and database rights 2014. Ordnance Survey 100023519.



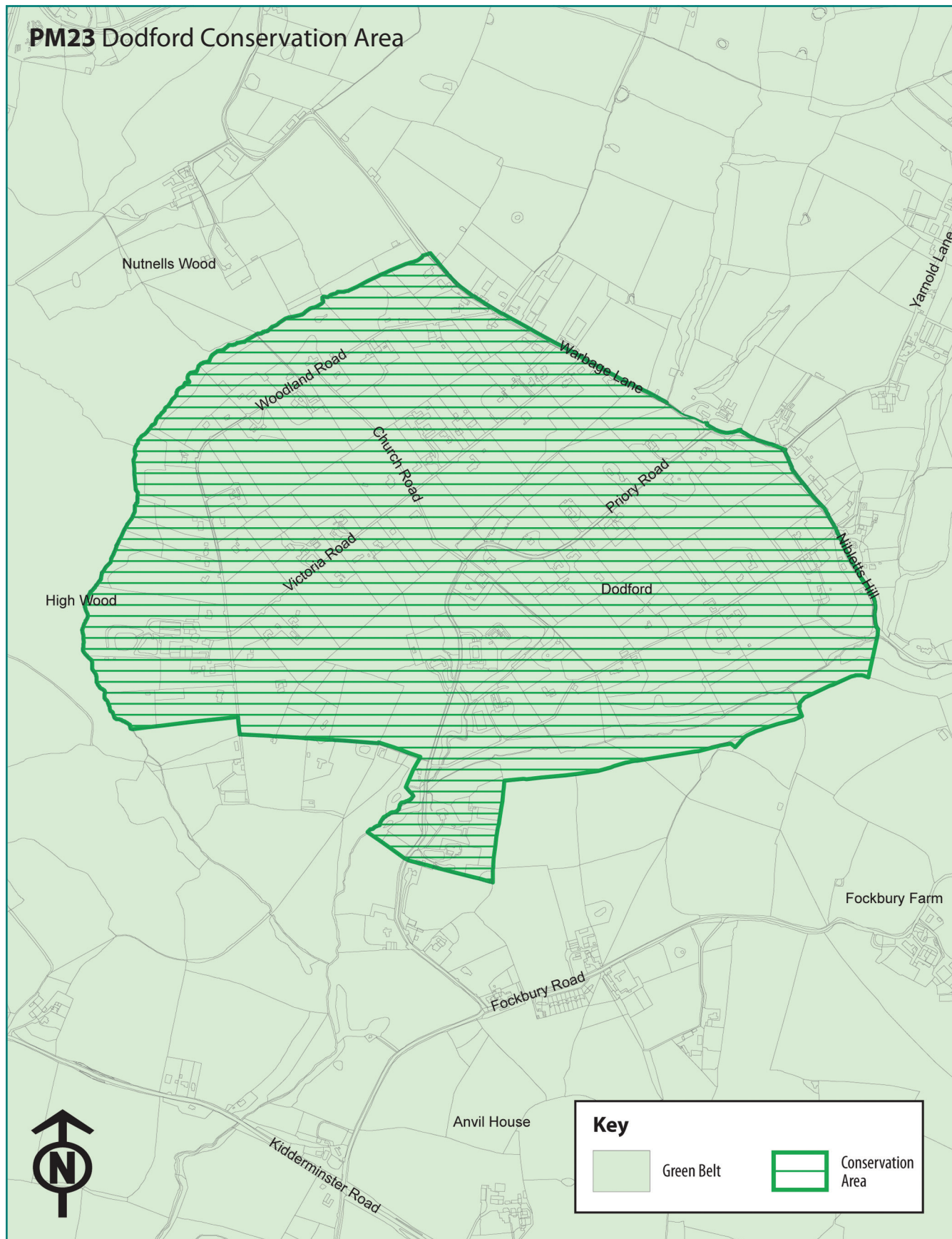
© Crown Copyright and database rights 2014. Ordnance Survey 100023519.



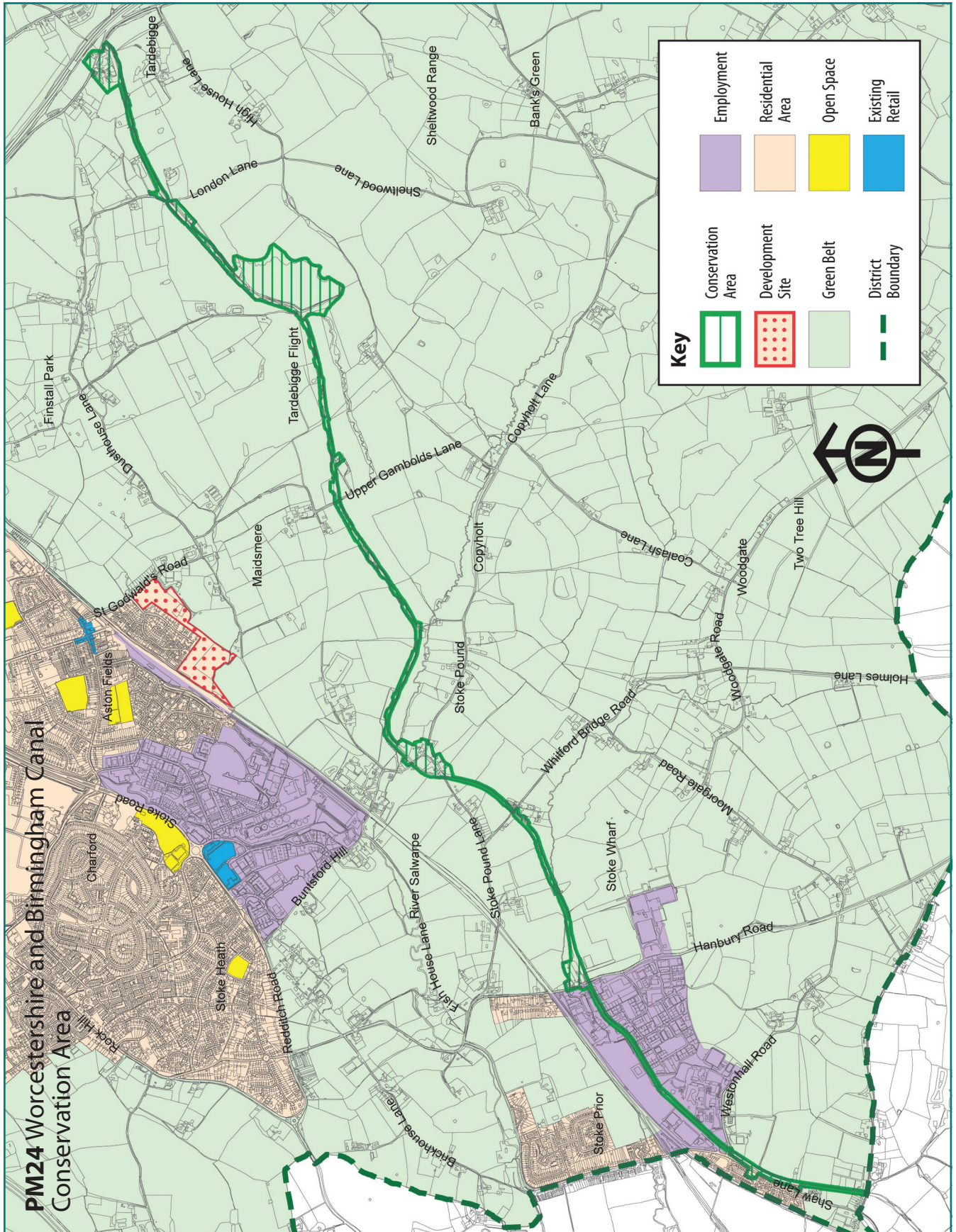
© Crown Copyright and database rights 2014. Ordnance Survey 100023519.



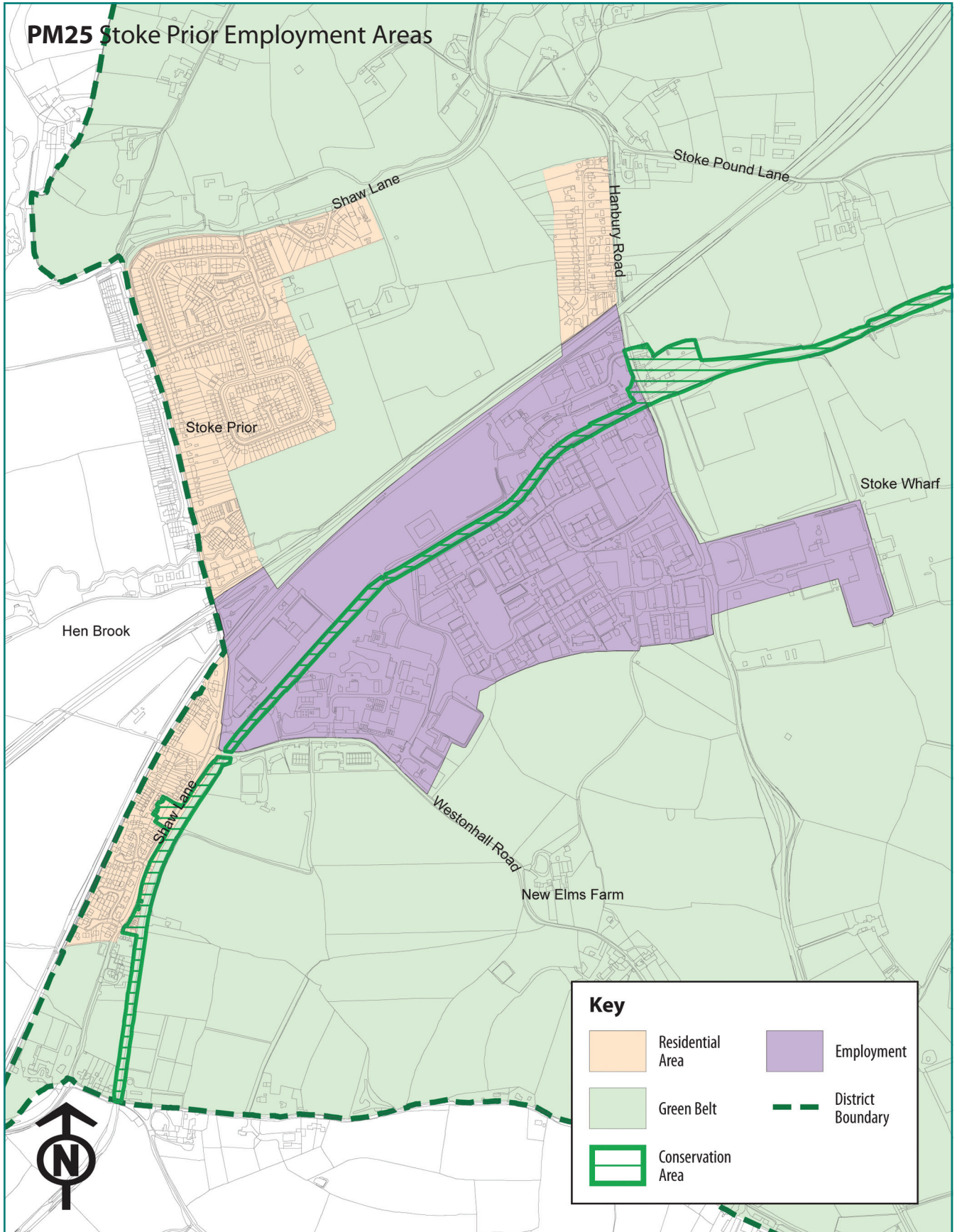
© Crown Copyright and database rights 2014. Ordnance Survey 100023519.



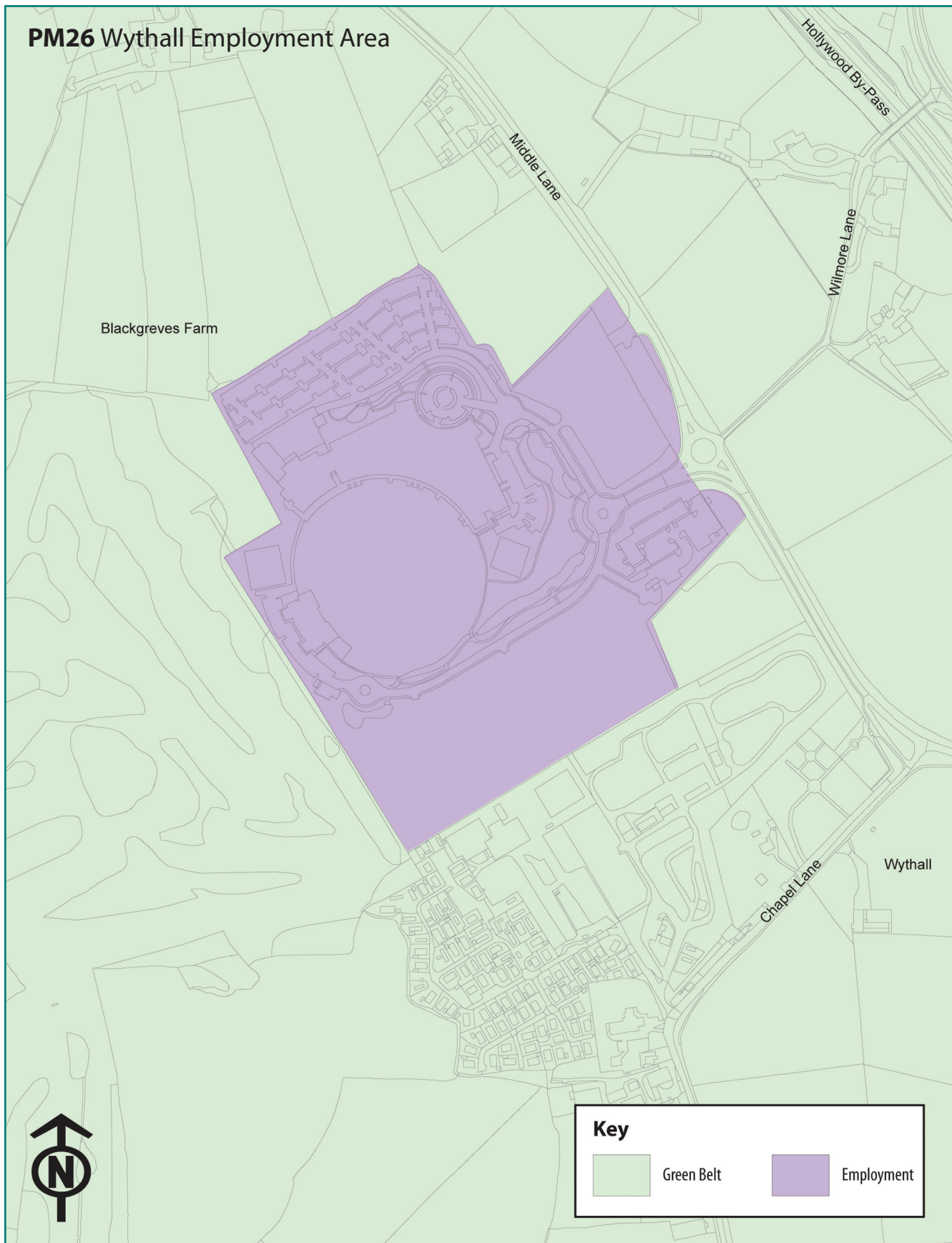
© Crown Copyright and database rights 2014. Ordnance Survey 100023519.



© Crown Copyright and database rights 2014. Ordnance Survey 100023519.



© Crown Copyright and database rights 2014. Ordnance Survey 100023519.



© Crown Copyright and database rights 2014. Ordnance Survey 100023519.

We will consider reasonable requests to provide this document in accessible formats such as **large print, Braille, Moon, audio CD or tape or on computer CD**

"Need help with English?" Contact Worcestershire HUB, Bromsgrove 01527 881288

'Potrzebujesz pomocy z angielskim?' Skontaktuj się z Worcestershire HUB, Bromsgrove, tel.: 01527 881288

"İngilizce için yardıma ihtiyacınız var mı?" 01527 881288 numarayı arayıp Worcestershire HUB, Bromsgrove ile irtibata geçin

"ইংরাজির জন্য সাহায্য চাই?" 01527 881288 নম্বরে উস্টাশায়ার হাব [HUB] ব্রমস্‌গ্রোভ [Bromsgrove]-এ টেলিফোন করুন

"ਅੰਗਰੇਜ਼ੀ ਵਿਚ ਮੱਦਦ ਚਾਹੁੰਦੇ ਹੋ?" ਵੁਰਸੈਸਟਰਸ਼ਾਇਰ ਹੱਬ [HUB] ਨੂੰ ਬਰੋਮਸਗ੍ਰੋ [Bromsgrove] ਵਿਖੇ 01527 881288 'ਤੇ ਟੈਲੀਫੋਨ ਕਰੋ

"انگریزی میں مدد چاہتے ہیں؟" ورسیسٹر شائر ہب [HUB]، برومزگرو [Bromsgrove] میں 01527 881288 پر رابطہ کریں



Bromsgrove
District Council

www.bromsgrove.gov.uk

● Planning and Regeneration

Strategic Planning

Bromsgrove District Council, The Council House
Burcot Lane, Bromsgrove, Worcestershire B60 1AA

Tel: (01527) 881316/881323/881314

Main Switchboard: (01527) 881288

Fax: (01527) 881313

DX: 17279 Bromsgrove

Email: strategicplanning@bromsgroveandredditch.gov.uk