

## **BATTLEFIELD BROOK, SANDERS PARK RIVER RESTORATION SCHEME — TRIAL SECTION — SUMMER 2009**

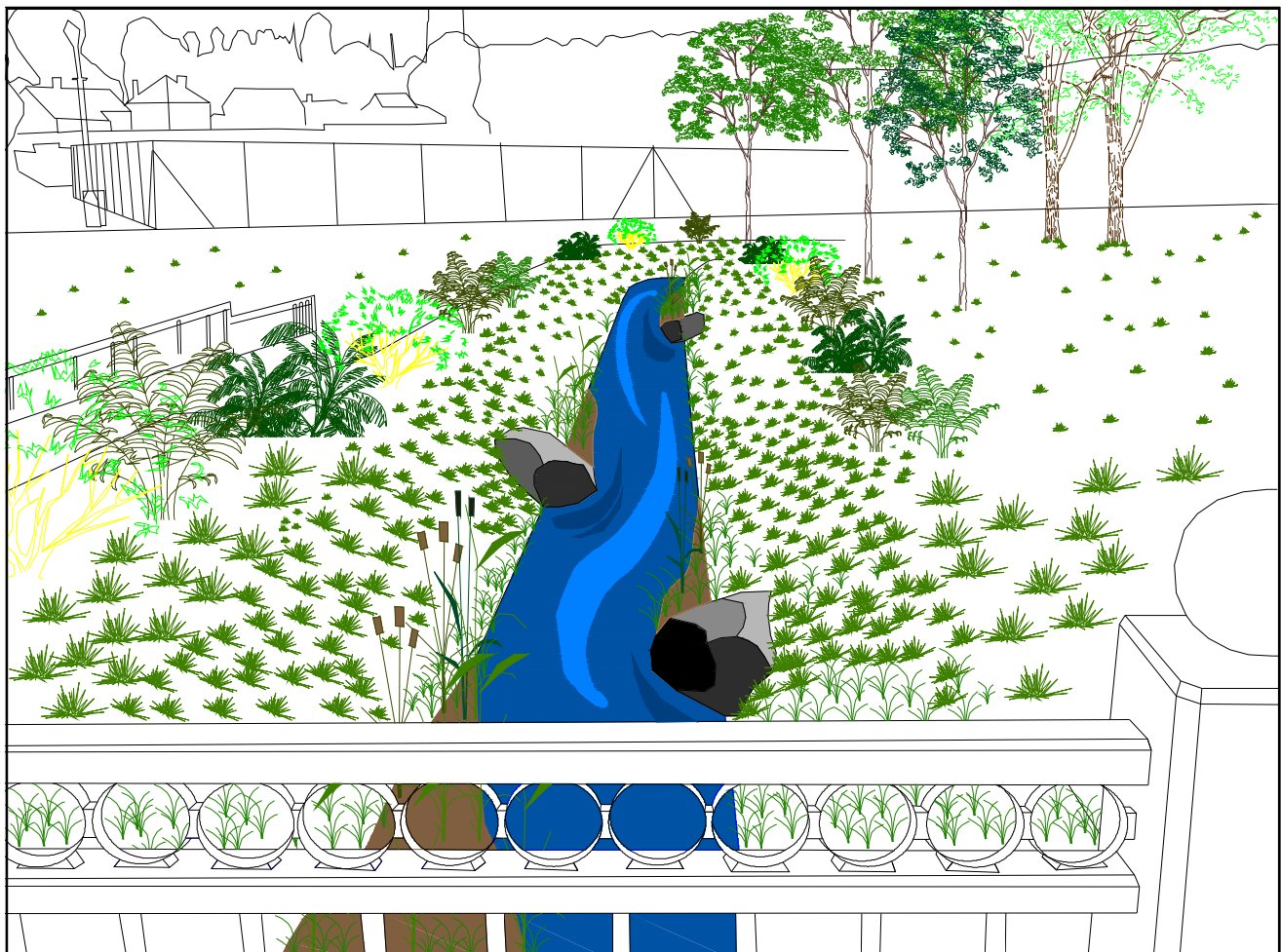
**CONCEPT:** RE-NATURALISATION OF A TRIAL SECTION OF THE HEAVILY CANALISED REACH OF BATTLEFIELD BROOK THROUGH SANDERS PARK, BROMSGROVE.



TYPICAL EXISTING CONDITIONS OF BATTLEFIELD BROOK

### **PROPOSED WORKS:**

- REINSTATEMENT OF 'SOFT' BANKS, ALLOWING FOR COLONISATION OF MARGINAL AND RIPARIAN BIOTA.
- CONCRETE BED TO BE RETAINED TO MAXIMISE FLOWS DURING DRY PERIODS.
- INSTALLATION OF LARGE PLACE STONE USED TO VARY FLOW DEPTHS AND VELOCITIES PROMOTING THE CREATION OF AQUATIC HABITATS.
- ENCOURAGED DEPOSITION IN THE LEE OF STONES TO FORM POINT BARS PROVIDING MEDIA FOR AQUATIC/SEMI AQUATIC BIOTA.
- REPLACEMENT OF HARD INLINE STRUCTURE (CONCRETE WEIRS) WITH A MORE NATURAL ALTERNATIVE MORE NATURAL



CONCEPT SKETCH OF IMPROVEMENT WORKS (Indicative Only)