

## NIGHTSTOP

If you are 16 or 17 and have no where to stay, you may be offered accommodation with Nightstop. Nightstop provides emergency overnight accommodation to homeless young people in the homes of volunteers.

Nightstop offer support and assistance from staff to help you consider what options are available, so that you can make informed and considered decisions about your future housing.

## TEMPORARY TENANCIES

In some cases, BDHT may be able to place you in a temporary tenancy whilst your case is being assessed. The more notice **BDHT** are given about your housing needs the more likely it will be that suitable temporary accommodation will be found. If you think you will need to access temporary accommodation you need to contact **BDHT** as soon as possible.

If you are placed in temporary accommodation over night, **BDHT** will need to see you the following morning. They will arrange an appointment, which you **MUST** turn up for. **BDHT** will always try to make it at a time convenient for you. They may need to fill in various forms with you, so allow plenty of time for the interview.

## WHO TO CONTACT

### Bromsgrove District Housing Trust

Buntsford Court, Buntsford Gate,  
Bromsgrove B60 3DJ. Tel: 01527 557557  
Emergency out of hours Tel: 0800 0304254  
8.30am-5.30pm Monday-Thursday  
8.30am-4.00pm Friday

### Citizens Advice Bureau

50-52 Birmingham Road, Bromsgrove B61 0DD.  
Tel: 01527 557397

**Appointments:** Monday-Thursday 9.30am and 11.00am

**Drop-In:** Monday 1.00pm-3.30pm

Tuesday-Thursday 1.00pm-3.00pm

Telephone Service also available Monday-Friday

**This leaflet can be provided in large print, braille, CD, audio tape and computer disc.**

If you require  
interpretation and translation  
services please phone  
**01527 881288**



**Bromsgrove**  
District Council

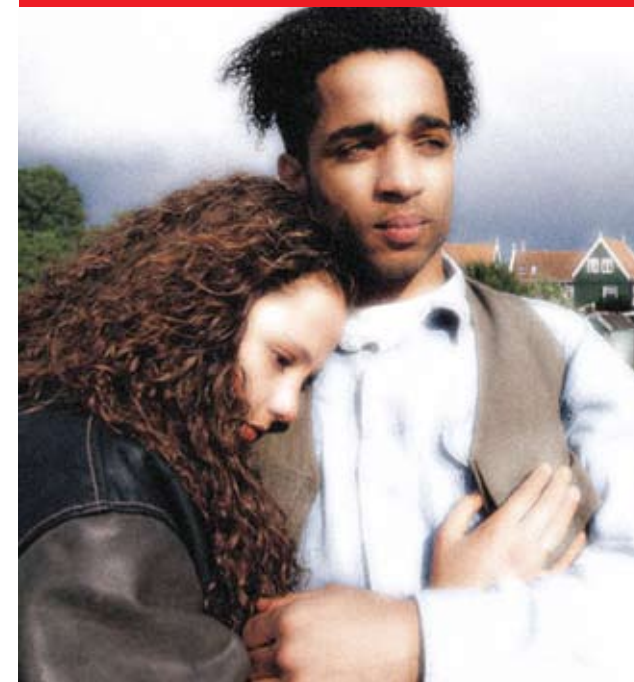
[www.bromsgrove.gov.uk](http://www.bromsgrove.gov.uk)

The Council House, Burcot Lane, Bromsgrove B60 1AA.  
Tel: 01527 881288 Fax: 01527 881313



VERSION 4

# Homeless Emergency Accommodation in Bromsgrove District



In partnership with



**Bromsgrove**  
District Council

[www.bromsgrove.gov.uk](http://www.bromsgrove.gov.uk)

## EMERGENCY HOUSING

Emergency housing that will be considered will depend on your circumstances and what is available at the time you are homeless. The first thing you need to do is to contact **Bromsgrove District Housing Trust (BDHT)** who can best advise you on what to do next on **01527 557557**.

## HOSTEL ACCOMMODATION

If you are homeless and in priority need you may be placed in a hostel on a temporary basis whilst BDHT investigate your homeless application.

You will be asked to pay rent and contribute towards the cost of electricity during your stay. You may be able to claim housing benefit for the rent.

If you are a single person, homeless and not in priority need you can contact these hostels:

**Birmingham City Mission: 0121 643 6182**

**St Paul's Worcester: 01905 723729**

**YMCA Worcester: 01905 423197**

**YMCA Redditch: 01527 61643**

You will need to contact these numbers daily to see if they have any vacancies.

## STAYING WITH RELATIVES OR FRIENDS

If you find yourself or family suddenly homeless, staying with relatives or friends may be the most practical option for you in the short term until more settled accommodation can be found. BDHT will still consider your housing options and priority for re-housing whilst you are staying with family or friends.

## OUT OF HOURS

If BDHT is closed you will have to phone: **0800 030 4254**

## DOMESTIC ABUSE

If you have had to leave your home because of domestic abuse from a partner/person belonging to your household or outside parties, you will need to contact BDHT as soon as possible for advice and assistance on what to do next.

You can be placed in a refuge or safe place whilst BDHT are looking for suitable accommodation for you and your family. You can also contact CAB who offer free, independent, confidential advice.

## SPECIALIST ORGANISATIONS

You can also contact specialist organisations who may be able to give additional help and advice on the following telephone numbers:

**West Mercia Womens Aid Helpline:  
0800 9803331**

## REFUGES

Refuges are a safety net for women, their addresses are kept secret so they can provide safety and security, as this is essential to the people who live there. There are staff on hand to offer support and advice. If you need legal advice or help claiming housing benefit, they can help you with this. Normally you will have a room of your own, but will have to share other facilities such as a bathroom and kitchen.

Men are not allowed in refuges and it is usual that males over 15 years of age will not be accommodated. As there are few specialist male domestic abuse refuges, men experiencing abuse, who have a priority need, will be found appropriate, alternative accommodation.

