

**!** Important Council Tax  
information inside

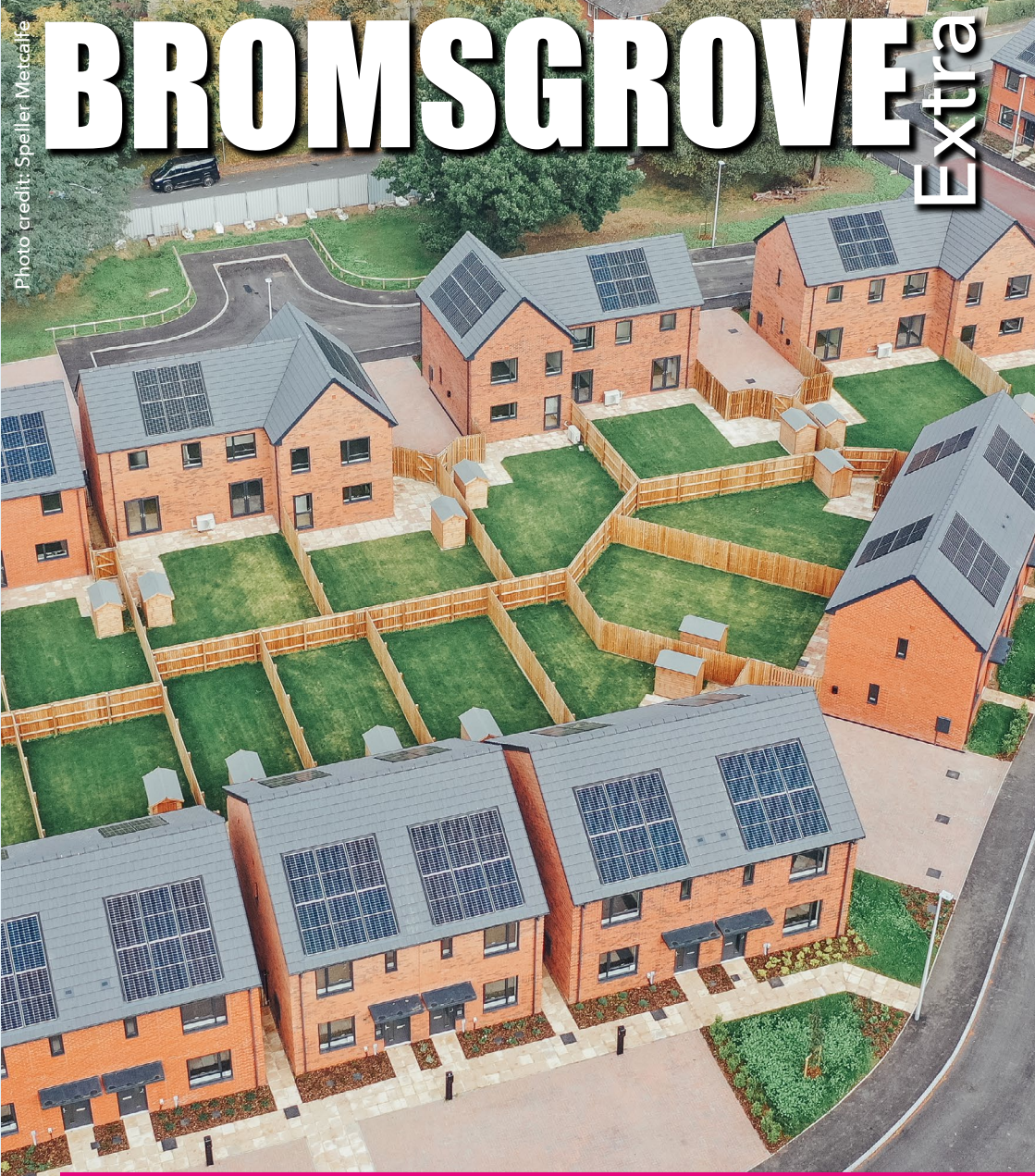


**Bromsgrove  
District Council**

[www.bromsgrove.gov.uk](http://www.bromsgrove.gov.uk)

# BROMSGROVE **Extra**

Photo credit: Speller Metcalfe



**How your money improves your district**



A message from  
The Leader of  
Bromsgrove  
District Council,  
Cllr Karen May

From running your  
local parks to cleaning  
your streets, managing  
everyone's planning  
applications and lots more

besides, the district council does a lot more  
than just empty your bin - and all for just £4.81  
a week.

This year some major projects are coming up,  
on top of the council's usual work.

That includes getting people living in the new  
low-carbon homes we had built on our old  
head offices on Burcot Lane in Bromsgrove.  
We're delighted with the results there, and for  
the 60-plus families who will be moving in. The  
council didn't take the easy option there and  
just sell that land off to a developer. Instead,  
we had it done it to the kind of high standard  
we want to see in the district - and in so doing,  
created a new long-term asset for the council  
and our residents.

Two Bromsgrove town centre regeneration  
projects, both part of the council's 2040 Vision,  
are also live. That's the pending works to clear  
away the former fire station and library at  
Windsor Street so it can become a residential  
development, and the catalysing commercial  
and cultural development at St John Street,  
on the last part of the former Market Hall site  
next to Waitrose, which has received planning  
permission.

Our new partnership with Zest is also bringing  
new electric vehicle charging points to land we  
own in the district, as we do our bit to improve  
charging infrastructure and support people  
who want to choose electric. That's at no cost  
to the council - all the investment is coming  
from Zest.

It continues to be a privilege to lead this  
council, whose members and officers work  
hard to improve our district and provide good  
quality local services.

## Useful contacts:

**Main Council Contact:** 01527 881288  
**Emergency out of hours:** 01527 871565

**Benefit enquiries:** 01527 881213  
benefits@bromsgrove.gov.uk

**Business Rates:** 01527 881671  
business.rates@bromsgrove.gov.uk

**Council Tax:** 01527 881671  
council.tax@bromsgrove.gov.uk

**Environmental Services:**  
*Including - bin queries, domestic waste,  
business waste, assisted collections,  
garden waste, septic tank and cesspool  
emptying, litter, landscape and trees,  
street cleaning, MOT testing and more.*  
01527 881188  
bsu@bromsgroveandredditch.gov.uk

**Freedom of Information:** 01527 64252  
foi@bromsgrove.gov.uk

**Parking:** 01386 565009  
bdcparking@bromsgrove.gov.uk

**Planning Enquiries:**  
01527 881770  
newplan@  
bromsgroveandredditch.gov.uk

**Revenues:** 01527 881671  
revenues@bromsgrove.gov.uk

**Room Bookings:** 01527 64252  
roombookings@  
bromsgroveandredditch.gov.uk

**Starting Well Partnership (support for  
families 0-19yrs):** 01905 520032

**Worcestershire Regulatory Services:**  
*Including - Licensing, Food Hygiene,  
Taxis, Environmental Health, Dog  
Wardens, Pest Control etc.*  
More details available here:  
www.worcsregservices.gov.uk  
01905 822799  
enquiries@worcsregservices.gov.uk

# Where your money goes

Bromsgrove District Council only keeps about 11p of every pound you pay in Council Tax, which helps pay for the services it provides. The rest is charged by other agencies for their services: police, fire and rescue, county and parish councils, and the government.



**Worcestershire County Council**  
£1,538.92\* | 4.99% increase



**Police and Crime Commissioner for West Mercia**  
£277.50\* | 4.91% increase



**Bromsgrove District Council**  
£250.00\* | 2.99% increase

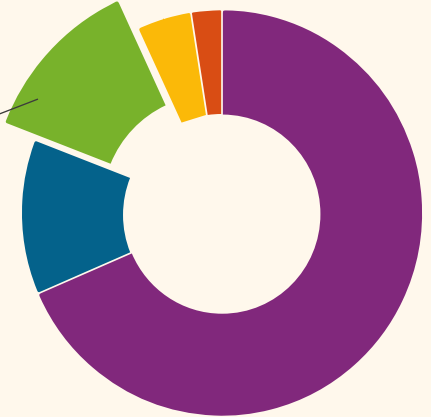


**Hereford and Worcester Fire and Rescue**  
£97.22\* | 2.99% increase



**Parish councils (average)**  
£32.21\* | 7.98% increase

**\*AVERAGE BAND D COUNCIL TAX**  
Total £2,195.85 | 4.7% increase



## How we will spend your money

This year the district council will spend £14.406m on delivering the council's key priorities:

- Economic Development and Regeneration
- Housing Growth
- Work and Financial Independence
- Improved Health and Wellbeing
- Community Safety and Anti-Social Behaviour
- Green Thread
- Financial Stability
- Organisational Sustainability
- High Quality Services

## How that's financed

The money to pay for those services comes from three main sources: 11.4% of your Council Tax, business rates set by the government, and funding from the government.

Net corporate resources	£ million
Net Business Rates	3.392
Net Council Tax	9.499
Government Funding	1.515
<b>Total</b>	<b>14.406</b>



## Capital spending

Capital spending is the money we spend on things like buildings and vehicles.

This year will see the council spend £3.1m on refurbishing some of the big fleet of vehicles that we use to collect rubbish to keep them in good condition (£12m in total over 5 years), improving play areas in your parks (£364,000) and the pavilion, car parking and pathways at Sanders Park (£250,000), updating car parking machines for motorists (£125,000), providing grants to help people who are disabled make changes to their home (£900,000), and keeping the systems that store your data up to date and secure (£177,000).

The money to pay for capital projects comes from a range of government funding sources, borrowing, or the council's own resources.

## Highlights for 2024/25

### Burcot Lane homes come online

The council's £10.3m development of its former head offices is complete, and the 61 low-carbon homes are now heading into the hands of their new owners. Six will be privately owned, bdht will own 12 for social rent and six more for shared ownership, and the council's new housing company Spadesbourne Homes will rent out 37 through local letting experts.



Photo credit: Speller Metcalfe



## The BWMF (that's the Bromsgrove Ward Member Fund)

New for this year, district councillors will each have a £2,000 fund to spend on things they believe would benefit communities in their local ward. The council has set aside £234,000 to pay for the BWMF for the next three years. Ask your local ward member about it - it's their decision, within the rules of the scheme. You can find their details at [bromsgrove.gov.uk/councillors](http://bromsgrove.gov.uk/councillors).

## Improved online services and systems

With more people using the internet to get more things done more often than ever before, we're building better ways for you to access services online, while protecting the council and all our residents' data from cyber criminals. Look out for some small but significant improvements this year to how our digital services work.

## Regenerating more council-owned land

Planning permission has been granted for a major development in Bromsgrove, to replace the temporary 'BirdBox' space next to Waitrose. That seeks to regenerate the area into an open-plan community pavilion building for daytime, evening, and weekend use, a high-quality office building with rooftop restaurant and food and drink outlet on the ground floor, and new public space around a re-naturalised Spadesbourne Brook. The work, which could start this year, accounts for the lion's share of Bromsgrove's £17.1m Levelling Up Fund award that's also set to clear the site of the old library and fire station on Windsor Street so it can become new housing.

The temporary 'BirdBox' in 2020 shortly before Levelling Up funding was secured to regenerate the land.



Artist impression of the proposed new community and commercial development.

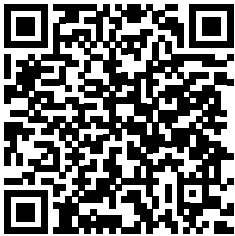


# Cost of Living



We know times are hard right now. That's why the borough council and lots of other local agencies are working together to connect you to the surprising range of support that is available.

Even if you don't claim any benefits, you may be entitled to support you weren't aware of - and not just monetary support, but good advice from legitimate sources you can trust.



For an easy-to-find collected list of key support and advice services that are available from a range of local partners, head to:  
[www.bromsgrove.gov.uk/costofliving](http://www.bromsgrove.gov.uk/costofliving)

We regularly update the information there, so you will often find new things alongside services that are already available from us or a range of other agencies - all with a focus on supporting people in the borough with the cost of living.

**Let's work together:** Please share information with friends, neighbours and colleagues







**Support to live independently at home from NEW Lifeline.**

- Portable pendant to call for help in an emergency at any time, day or night
- Monitoring Centre Operators will receive the call and assist
- A digital Lifeline unit with inbuilt connectivity. Ideal for those who have a recently upgraded phone service or who don't have a telephone line.
- Many extra features available: fall detection, emergency location pinpointing, mobile version that even works away from home



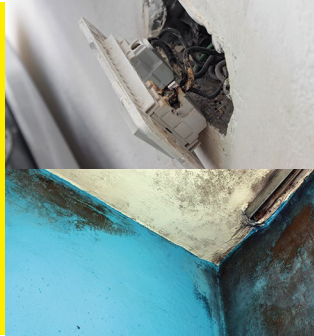
Certified Organisation

Contact us on 01527 534060  
or [lifeline@bromsgroveandredditch.gov.uk](mailto:lifeline@bromsgroveandredditch.gov.uk)

**Do you have problems with your rented  
accommodation in Bromsgrove?**



**Poor living conditions  
Harassment  
Cold and damp  
Illegal eviction  
Tenancy rights  
High bills  
No smoke alarms  
Overcrowding**



**WE CAN HELP YOU**

For advice and assistance call

**01527 881601**

Alternatively you can visit:

[www.bromsgrove.gov.uk/report-it](http://www.bromsgrove.gov.uk/report-it)



**Bromsgrove  
District Council**

[www.bromsgrove.gov.uk](http://www.bromsgrove.gov.uk)

- | Shopping
- | Visiting
- | Leisure
- | Travel connections



Monday to Friday, district-wide

Easy registration by phone, email, or website  
01527 585893 | [burt@burtrides.org.uk](mailto:burt@burtrides.org.uk) | [www.burtrides.org.uk](http://www.burtrides.org.uk)



**Bromsgrove**  
District Council  
[www.bromsgrove.gov.uk](http://www.bromsgrove.gov.uk)

## SIGN UP FOR THE Garden Waste service

**EASY, CLEAN  
& CONVENIENT**

20 collections, March - November

Just £54.10 per bin

[www.bromsgrove.gov.uk/gardenwaste](http://www.bromsgrove.gov.uk/gardenwaste)



- 240l wheeled bins collected fortnightly
- Sign up for one or more bins
- Service runs w/c Feb 27 or Mar 5 until w/c Nov 25 or Dec 2 (depending on your bin day)



**Bromsgrove**  
District Council  
[www.bromsgrove.gov.uk](http://www.bromsgrove.gov.uk)



# Building Control made simple



## A Customer focussed service driven by **Quality** not Profit.

Publically accountable

Readily available surveyors/same day services

Local knowledge

Fast and efficient service with fully qualified  
surveying teams

Do you have knee,  
hip or back pain?

escape pain

Join our ESCAPE-pain class, meet other people living with osteoarthritis and learn:  
- information and simple ways to better manage knee, hip, and back pain.  
- A gentle, individualised exercise programme that matches your needs and pace

### Class Details



**Venue:** Bromsgrove Sports and Leisure Centre



**Day/ Dates:** Mondays and Wednesdays



**Time:** 2:15pm to 3.15pm

**Duration:** 12 sessions over 6 weeks

**Starting:** Courses running throughout 2024

SCAN TO  
REGISTER



### How do I sign up?

Complete a registration form at  
ESCAPE-pain - [bromsgrove.gov.uk](http://bromsgrove.gov.uk)  
or call 01527 881404



SUPPORTED BY  
**Bromsgrove**  
District Council  
[www.bromsgrove.gov.uk](http://www.bromsgrove.gov.uk)

We work alongside your Doctor  
to help you to feel better

**UNEMPLOYMENT • LONELINESS • MONEY • FAMILY LIFE  
BENEFITS • WELLBEING • HOUSING • RELATIONSHIPS**

Social Prescribing can link you to free and low-cost  
services to help you overcome issues you may be facing.

Contact us on 0300 303 5291 or [rbccg.spbromsgrove@nhs.net](mailto:rbccg.spbromsgrove@nhs.net) to  
reach a friendly Social Prescribing link worker and find out more.

**Social Prescribing: helping you to feel better**

We offer support  
to adults aged 18+



**Bromsgrove**  
District Council  
[www.bromsgrove.gov.uk](http://www.bromsgrove.gov.uk)



Bring  
photo ID  
to vote in  
elections

Don't have ID?

Apply for free voter ID.

For more information, visit

[electoralcommission.org.uk/voterID](https://electoralcommission.org.uk/voterID)

# Kerbside Recycling Quick Guide



## You can recycle



- 1. Plastic bottles**  
e.g. Shampoo bottles
- 2. Plastic pots**  
e.g. Yoghurt pots
- 3. Plastic tubs**  
e.g. Quality Street tub
- 4. Plastic trays**  
e.g. Meat trays and fruit punnets
- 5. Aerosols**  
e.g. Deodorant cans
- 6. Food tins**  
e.g. Baked beans
- 7. Drinks cans**  
e.g. Fizzy drink cans
- 8. Cartons**  
e.g. Tetra Pak
- 9. Cardboard**  
Flatten boxes, no glitter
- 10. Paper**  
No glitter or foil wrap
- 11. Glass bottles**  
All colours
- 12. Glass jars**  
All colours

All items must be rinsed clean and be loose in your green bin so it can be sorted

If it isn't on the list above we can't accept it in the green bin

## You cannot recycle



- 1. Food waste**
- 2. Nappies**
- 3. Sanitary items**
- 4. Crisp packets**
- 5. Plastic wrappers**
- 6. Black plastic**
- 7. Wet wipes**
- 8. Tissues, kitchen and toilet roll**
- 9. Polystyrene**
- 10. Animal litter and bedding**
- 11. Plastic bags**

Put all these things in your black bin.

### Why it's important that we try to put the right things in the right bin:

- Items cannot be recycled if they are in the wrong bin;
- If you put non-recyclable items (i.e. food waste) in your green bin you may contaminate other items;
- It makes the recycling harder to sort and process.

Remember: Right thing, right bin. Clean & loose.

LET'S  
WASTE  
LESS

For more information on what to recycle and how to reduce your waste, visit: [letswasteless.com](https://www.letswasteless.com)

# Worcestershire Starting Well Service 0 - 19



Starting Well Partnership  
EVERY CONTACT SHAPES A LIFE

## Groups for Parents & Carers

Being a parent can be tough! We all need a little support along the way. We have a range of behaviour and development support groups for parents and carers with children pre-birth to 19 years. Call our friendly Starting Well team to find out more on **01905 520 032**.

## Childcare Choices Looking for help with your childcare cost?

Please go to [www.childcarechoices.gov.uk](http://www.childcarechoices.gov.uk) or call us on **01905 520 032**.

## Need support breastfeeding?

For further information and details on the peer support group, contact the Starting Well Breastfeeding Support Team via email: [whcnhs.breastfeedingsupport@nhs.net](mailto:whcnhs.breastfeedingsupport@nhs.net) or visit the Starting Well website [www.startingwellworcs.nhs.uk](http://www.startingwellworcs.nhs.uk)

## Healthy Start Vitamins



FREE Healthy Start vitamins if you're pregnant and until your child is 12 months old - or if they're receiving Healthy Start vouchers, until they're four. To apply and find out more, go to [www.healthystart.nhs.uk](http://www.healthystart.nhs.uk)

## Volunteering opportunities

We are looking for volunteers and peer support workers to support the delivery and administration of our groups and services. Our invaluable volunteers are important team members and benefit from developing confidence and skills, with full training and ongoing support. For an informal chat contact Peer Support & Volunteer Co-ordinator Ruth Harper on **07833933791** or [ruth.harper@bromsgroveandredditch.gov.uk](mailto:ruth.harper@bromsgroveandredditch.gov.uk) [www.startingwellworcs.nhs.uk/volunteering](http://www.startingwellworcs.nhs.uk/volunteering)

## Telephone Advisory Service (TAS)

To speak with a member of the Health Visiting team for advice on any worries or concerns you might have about your child's development up to age 5, including feeding, behaviour, toileting and sleeping, just call TAS on **01905 520 032** (Monday-Friday, 9am-1pm)

## Your local hubs are:

**Bromsgrove -**  
Pear Tree Family Hub,  
Broad St, Bromsgrove,  
B61 8LW  
**Redditch -**  
Holly Trees Family Hub,  
St Stephen's First  
School, Mabey Ave,  
Riverside, Redditch,  
B98 8HW  
We can help signpost you to local services.  
Tel: **01905 520 032**



To find out more  
Find us on social media:

@StartingWellIRB  
 @BgroveandRditch

Scan the QR code to visit our website  
[startingwellworcs.nhs.uk](http://startingwellworcs.nhs.uk)



## Understanding your...

Pregnancy | Baby | Child | Child with additional needs | Teenager | Relationships | And more

## Pre-paid online courses for you!

- Visit [www.inourplace.co.uk](http://www.inourplace.co.uk)
- Enter code **PARENTSROCK**
- Begin learning

[www.startingwellworcs.nhs.uk](http://www.startingwellworcs.nhs.uk)

EVERY CONTACT SHAPES A LIFE

Provided by:

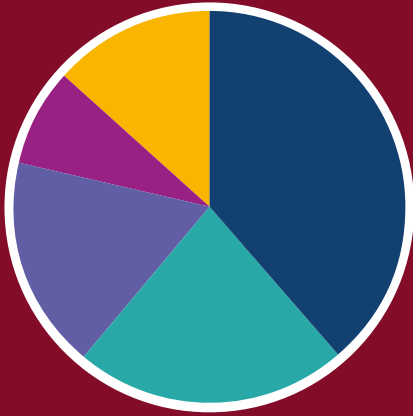


In partnership with:





# Worcestershire County Council Budget 2024/25



## 2024/25 expenditure

- Adult Social Care, Public Health and Communities (**£168m**)
- Children's Services (**£97m**)
- Economy, Infrastructure and Environment (**£76m**)
- Home to School Transport (**£35m**)
- Support Services including Finance and Legal (**£57m**)

Total: **£433m Net budget**

We also have a capital programme and continue to invest in what you have told us is important:

A total of **£34m** to improve roads and **£6m** to improve pavements this year.



**£78.8m** on improving and building new schools including Foxlydiate in Redditch.

**£20.2m** on walking and cycling improvements include Hampton and Kepax bridges.



**£53m** on cutting congestion and infrastructure improvements including A38 in Bromsgrove.



**£17.3m** to improve rail station facilities.



**£4.6m** to continue with our street light improvement programme.



The Government is providing additional funding and we are reforming the way we work to deliver savings and efficiencies. However, this is not enough to meet the budget pressures and therefore we need to increase Council Tax to be able to adequately fund these services.

Our Council Tax will though remain one of the lowest of any comparable County Council in the country.

The additional funding will mean we can continue to deliver vital children's and adult social care to protect the most vulnerable in our society, on which we now spend over 70% of our revenue budget.

It will also enable us to maintain our commitments to invest in the priorities that you have told us are most important. These include better roads and pavements, tackling congestion and improving public transport alongside investments in the economy, environment and extra school places.

Kind regards,  
**Councillor Simon Geraghty, Leader of  
Worcestershire County Council**

**I know the last year has been a difficult one for many.** The Council has faced similar challenges too from the impact of inflation on costs and increasing demand for services which have added significantly to our budget pressures.

With more vulnerable people needing our support, and with the cost of this care increasing significantly, we have needed to increase our budget this year to ensure we can continue to provide these essential services.

**With a gross budget from Council Tax, Government Grants and other income we will be spending a record amount to help protect the most vulnerable people in our communities:**






**£295m** for those who need Adult Social Care in 24/25



**£177m** to improve the lives of Children and Young People



**£91m** to support people to live independently for longer through Public Health and Communities

-  [www.worcestershire.gov.uk](http://www.worcestershire.gov.uk)
-  /YourWorcestershire
-  @worccsc and @worcstravel
-  @YourWorcestershire
-  Search Worcestershire County Council



## **Council Tax Valuation**

Most owned or rented dwellings are subject to Council Tax, the amount you pay depends on the value of your property. The Valuation Office Agency (VOA) has placed each dwelling in one of eight valuation bands. These bands are based on the price a property would have fetched if it had been sold on 1st April 1991. Any increase or fall in a dwelling's value since then will not affect your Council Tax band.

Please note that the VOA has assessed the value of the properties and not the council. Your Council Tax bill tells you which band your dwelling is in. You can appeal against your valuation if:

- There is a material increase or reduction in the value of the dwelling
- You start or stop using part of the dwelling for business
- You have just moved in, but you must appeal within 6 months of your move
- The listing officer alters the band

If you think your band is wrong, please visit **[www.voa.gov.uk](http://www.voa.gov.uk)**

## **Discounts**

The full Council Tax bill assumes that two adults live in a dwelling. If you are the only adult living in a property, your Council Tax bill will be reduced by 25%. You may also be eligible for a 25% discount if you or someone that lives with you falls into one of the following categories:

- A full time student, student nurse, apprentice, youth training trainee, or a non-British spouse/dependant of a student
- A permanent resident in a hospital or care home
- A person who is severely mentally impaired
- A person resident in a hostel or night shelter
- A person who is 18 or 19 years old and has just left school or college
- A resident care worker who is paid no more than £44.00 per week to provide care to the person they live with.
- A person caring for someone with a disability who is not their spouse, partner or child under 18 years of age.
- A member of visiting overseas forces, certain international institutions or certain religious communities.
- A person who is in prison (except those in prison for non-payment of Council Tax or a fine)
- A diplomat or member of an international organisation with UK headquarters



## Empty Home Discounts

A discount of 100% is applicable for the first 30 days in which a property is unoccupied and substantially unfurnished. After this 30 day period the charge will be 100%. Entitlement to the discount begins on the date the property first becomes unoccupied and unfurnished and in order for a new period of discount to be granted there must be a minimum period of occupation of 6 weeks.

## Long Term Empty Property Premiums

Dwellings that have been unoccupied and unfurnished for one year, and are not subject to a statutory exemption, will have an additional premium of 100% council tax applied to them. Properties that have been empty for over five years will have an additional premium of 200% added to the council tax bill. Properties that have been empty for 10 years or more will have an additional premium of 300% added to the council tax bill

## Exempt Dwellings

The list below is a summary of properties that are exempt from Council Tax:

- Left empty by students or school leavers
- Left empty by someone who has gone into prison or moved into a hospital, a residential care home or elsewhere to receive care
- Left empty by someone who has moved elsewhere to provide care for someone
- Empty and waiting for probate or letter of administration to be granted. Exempt for up to six months after the grant is made, then 100 percent charge applies
- Left empty by someone who is bankrupt or properties repossessed by a mortgage lender
- Occupied only by people under 18
- Occupied only by people who are severely mentally impaired
- Occupied only by students, or student halls of residence
- An unused caravan pitch or boat mooring
- Properties where occupation is prevented by law or by the actions of a local authority
- Waiting to be occupied by a minister of religion
- Part of a dwelling, such as an annexe or granny flat, which is empty and may not be let separately to the main home
- Occupied by members of visiting forces, certain international organisations, a foreign diplomat, or member of an international organisation with headquarters in the UK.
- Owned by the ministry of defence and held available for service personnel
- Any part of a property, such as an annexe or granny flat, which is occupied by a dependant relative of the family resident in the other part. The relative must be either; over 65 years of age, severely mentally impaired, or substantially and permanently disabled.

## Disabled Person Reduction

If you or someone who lives with you is disabled and because of their disability needs extra space in your property, such as an extra kitchen or bathroom or extra space because they use a wheelchair indoors, then you may be entitled to a reduced Council Tax bill. Contact us for more information.

## **National Discount for Annexes**

If your property includes a main home and an annexe then you would usually pay Council Tax for both the main home and the annexe. You can now receive a 50% Council Tax discount for the annexe provided that it is either used by the resident of the main home as part of their home or it is used as the sole or main residence of a relative of the person living in the main home.

## **Local Council Tax Support**

Council Tax Support – can provide help with some or all of your Council Tax. Whether you get help depends on your personal circumstances and your income and savings. Generally the more income and savings you have the less likely you are to qualify for help.

To claim you will need to complete a claim form, available from our website.

## **Discretionary Reductions**

The council has a discretionary power to reduce the amount payable. The Council Tax can be reduced by any amount and the power can be exercised on a case-by-case basis or by determining a local discount.

A decision to reduce Council Tax using this power would usually only be made in exceptional circumstances.

## **Claiming Discounts, Exemptions and Reductions**

If you think that you are entitled to a discount, exemption or reduction and it is not shown on your bill then please contact us.

If your bill shows a discount, exemption or reduction to which you are not entitled then please let us know straight away. If you do not let us know then you may have a penalty of £70, if you continue to fail to provide us with the correct information then you may have to pay a further penalty of £280.

## **Instalment Scheme**

Your Council Tax is normally payable in 10 instalments; you have the right to request payment in 12 instalments. If you would like to pay in 12 instalments then you must request this in writing and the request must be received by the 15th April, however we recommend that you contact us by telephone to discuss switching.

## **Appeals**

You can appeal if you consider that you are not liable to pay Council Tax – for example because you are not the resident – or because you believe your property is exempt. You can also appeal if you believe that we have made a mistake by not giving you a discount, or reduction to which you believe you are entitled.

Making an appeal does not allow you to withhold payment of Council Tax and you should continue to pay as requested in your latest Council Tax demand. If your appeal is successful any overpayment will be refunded to you.

Any appeal must be made in writing, we will then respond to you within 2 months, if you disagree with our response, or if we do not reply within 2 months then you may appeal directly to the Valuation Tribunal. Details are available on request from us or the Tribunal Office, Hepworth House, Unit 2 Trafford Court, Doncaster, DN1 1PN.

## **Adult Social Care Information**

The Secretary of State made an offer to adult social care authorities. ("Adult social care authorities" are local authorities which have functions under Part 1 of the Care Act 2014, namely county councils in England, district councils for an area in England for which there is no county council, London borough councils, the Common Council of the City of London and the Council of the Isles of Scilly.)

The offer was the option of an adult social care authority being able to charge an additional "precept" on its council tax without holding a referendum, to assist the authority in meeting its expenditure on adult social care from the financial year 2016-17. It was originally made in respect of the financial years up to and including 2019-20. If the Secretary of State chooses to renew this offer in respect of a particular financial year, this is subject to the approval of the House of Commons.

## **Financial Information**

Information relating to the relevant and previous financial years in regard to gross expenditure of the billing authority, precepting authorities and any body that has issued a levy on the billing authority or the precepting authority is available at [www.bromsgrove.gov.uk/council-tax-info](http://www.bromsgrove.gov.uk/council-tax-info)

A hard copy of the information is available where requested in writing.

## **Enquiries About Your Bill**

If you have any questions about your Council Tax bill:

Write to: Revenue Services, Bromsgrove District Council, Parkside, Market Street, Bromsgrove, Worcestershire B61 8DA.

Call: 01527 881671 between 9am and 5pm (10am and 5pm Tuesday)

Email: [revenues@bromsgrove.gov.uk](mailto:revenues@bromsgrove.gov.uk)

Visit Website: [www.bromsgrove.gov.uk](http://www.bromsgrove.gov.uk)



# MORE POWER

**NOW LIVE:**  
System upgrade  
for 2024

## at your fingertips

Tap to connect **DIRECTLY** to our front line street cleaning staff in your area



**REPORT ISSUES**

**REQUEST SERVICE**

**STRAIGHT TO PEOPLE ON THE GROUND**

**IT'S NEVER BEEN EASIER.**

Just head to

[www.bromsgrove.gov.uk](http://www.bromsgrove.gov.uk)



**Bromsgrove**  
District Council

[www.bromsgrove.gov.uk](http://www.bromsgrove.gov.uk)